



HOPE2FAMILIES



INFORMATION **HOPE2FAMILIES & WILDFIRE** **PACK**

FOUNDED IN 2019, HOPE2FAMILIES IS A REGISTERED CHARITY THAT SEEKS TO PROVIDE PRACTICAL SUPPORT FOR THOSE WITH CANCER AND IN WIDER SUFFERING. OUR CHARITY CONTAINS WILDFIRE, WHICH ACTS AS THE YOUTH BRANCH OF THIS CHARITY.

THE WHAT!

WHAT WE STAND FOR

YOU ALWAYS HAVE TO START WITH THE WHAT BEFORE ANYTHING ELSE!

OUR WHAT IS FOURFOLD:

- 1. PES SUPPORT FOR FAMILIES | WE WANT TO PROVIDE PRACTICAL, EMOTIONAL AND SPIRITUAL SUPPORT FOR FAMILIES THAT COME OUR WAY, SPECIFICALLY THOSE BATTLING WITH CANCER.**
- 2. INSTILLING HOPE FOR FAMILIES | WE WANT TO INSTIL HOPE TO ANY INDIVIDUAL WHO COMES IN CONTACT WITH OUR CHARITY**
- 3. RESTORATION FOR FAMILIES | WE WANT TO PROVIDE RESTORATION FOR CHILDREN, PARENTS AND FAMILIES; MENDING WOUNDS AND HEALING HURTS.**
- 4. RAISING AWARENESS FOR FAMILIES | WE WANT TO RAISE AWARENESS FOR CANCER SUFFERERS, THOSE WITH ADDICTION AND IMPOVERISHED FAMILIES, PROVIDING THEM FINANCIAL SUPPORT AND MAKING PEOPLE AWARE OF THE DIFFICULT SITUATIONS FAMILIES ARE SO OFTEN PLUNGED INTO.**

FOUNDED IN 2019, HOPE2FAMILIES IS A REGISTERED CHARITY THAT SEEKS TO PROVIDE PRACTICAL SUPPORT FOR THOSE WITH CANCER AND IN WIDER SUFFERING. OUR CHARITY CONTAINS WILDFIRE, WHICH ACTS AS THE YOUTH BRANCH OF THIS CHARITY.

THE WHY!

WHY WE DO WHAT WE DO

FOR EVERY WHAT THERE IS A WHY? AND THE WHY HAS TO BE THE MOTIVATION THAT DRIVES ANYTHING.

OUR WHY IS FOURFOLD:

- **OUR STORY | ON THE EVE OF THE FIRST LOCKDOWN, USHERED IN BY THE PANDEMIC, MARC TAYLOR WAS DIAGNOSED WITH CANCER, MARKING THE BEGINNING OF A JOURNEY THAT SO MANY HAD MADE BEFORE HIM, AND SO MANY WOULD MAKE IN THE FUTURE. HAVING COME THROUGH THE OTHER SIDE, MARC, ALONG WITH HIS SON, SET UP 'HOPE2FAMILIES.'**
- **EXPOSURE TO THE DEVASTATION | THE DEVASTATION OUT THERE IN FAMILIES WOULD MOTIVATE ANYONE TO REACH OUT A MESSAGE OF HOPE, ESPECIALLY THOSE WHO PROFESS TO KNOW CHRIST.**
- **SEEING A NEED AND MEETING THE NEED | WHEN CONFRONTED WITH FAMILIES WHO ARE BROKEN WITHIN OUR LOCAL COMMUNITIES, WHO DO THEY TURN TO, WHO CAN JOURNEY WITH THEM DAY BY DAY?**
- **PUTTING FEET TO IT | COMPASSION NECESSITATES ACTION, THIS CHARITY IS OUR ACTION, THAT WE HOPE WILL BEGIN A PRECEDENT THAT SEES GENERATIONS RESPOND TO THE CALL.**

FOUNDED IN 2019, HOPE2FAMILIES IS A REGISTERED CHARITY THAT SEEKS TO PROVIDE PRACTICAL SUPPORT FOR THOSE WITH CANCER AND IN WIDER SUFFERING. OUR CHARITY CONTAINS WILDFIRE, WHICH ACTS AS THE YOUTH BRANCH OF THIS CHARITY.

THE HOW!

THE HOW WE DO IT

HOW THEN DO WE ACHIEVE OUR WHAT AND MEET OUR MOTIVATION - THAT IS OUR WHY!

OUR HOW IS FOURFOLD:

1. DIVERSE ONLINE CONTENT. WE LIVE IN AN AGE OF TECHNOLOGY, SO WE WANT TO UTILISE IT. WE UPLOAD VARIOUS CONTENT ON A RANGE OF PLATFORMS, INCLUDING PODCASTS.

2. OUR PROGRAMS.

POVERTY CARE

CANCER CARE

ELDER CARE

3. EVENTS.

- CHRISTMAS DINNER

- EASTER EVENT

- SUMMER TENT MISSION

- WEDNESDAY NIGHT BIBLE STUDY

4. TEAMS FOR HOPE. HOW WE REACH THE FAMILIES IN OUR COMMUNITIES IS PARAMOUNT. PAINTING, GARDENING, HELPING WITH MOVES AND MORE.

FOUNDED IN 2019, HOPE2FAMILIES IS A REGISTERED CHARITY THAT SEEKS TO PROVIDE PRACTICAL SUPPORT FOR THOSE WITH CANCER AND IN WIDER SUFFERING. OUR CHARITY CONTAINS WILDFIRE, WHICH ACTS AS THE YOUTH BRANCH OF THIS CHARITY.

THE WHERE!

THE WHERE YOU CAN FIND US

WHERE DO YOU GO FROM HERE? HOW CAN YOU GET INVOLVED OR TRACK WHAT WE WILL BE DOING?

OUR WHERE IS FOURFOLD:

1. SOCIAL MEDIA. YOU CAN FIND US ON ANY WIDELY USED SOCIAL MEDIA!

-OUR INSTAGRAM

-OUR FACEBOOK

-OUR TWITTER

-OUR TIKTOK

-OUR VISCO

-OUR SNAPCHAT

-OUR LINKEDIN

ALL OF THAT CAN BE FOUND HERE VIA THIS LINK

[HTTPS://LINKTR.EE/HOPE2FAMILIES](https://linktr.ee/hope2families)

2. OUR WEBSITE. YOU CAN FIND EVERYTHING YOU NEED TO KNOW ABOUT US VIA OUR WEBSITE

[HTTPS://HOPE2FAMILIES.COM](https://hope2families.com)

3. OUR BUILDING. WE ARE LOCATED IN COLERAINE, NORTHERN IRELAND, LONG COMMONS CAR PARK.

EVERYTHING IN ONE LINK: [HTTPS://LINKTR.EE/HOPE2FAMILIES](https://linktr.ee/hope2families)

WILDFIRE SEEKS TO IGNITE MEN AND WOMEN OF GOD INTO A DEEPER DISCIPLESHIP WITH CHRIST. DISCIPLESHIP MEANING ENCOUNTER WITH JESUS, BAPTISM AND LOCAL BODY PLUG IN. WILDFIRE ACTS AS THE DISCIPLESHIP BRANCH OF HOPE2FAMILIES.

THE WHAT!

WHAT WE STAND FOR

YOU ALWAYS HAVE TO START WITH THE WHAT BEFORE ANYTHING ELSE!

OUR WHAT IS FOURFOLD:

- 1. BUILDING COMMUNITY AND UNITY. WE ARE MADE FOR COMMUNITY AND RECOGNISE THAT THERE ARE SO MANY PEOPLE WHO ARE LACKING IN THIS AREA, WE WANT TO CREATE A SPACE FOR PEOPLE TO COME AND MAKE MEANINGFUL RELATIONSHIPS. WITHIN WILDFIRE WE TAKE SERIOUSLY WHAT JESUS SAID: “BE ONE JUST AS ME AND THE FATHER ARE ONE.” WE WANT TO UNIFY CHURCHES, COMMUNITIES AND PEOPLE UNDER GOD’S LOVE.**
- 2. POINTING PEOPLE TO THE LOCAL BODY. WE WANT EVERYONE TO KNOW ABOUT EKKLESIA (CHURCH) AND WANT EVERYONE TO BE APART OF A FAMILY THAT LOVES THEM.**
- 3. HELPING PEOPLE ENCOUNTER JESUS. OUR LIVES OUR MARKED BY BEING A DISCIPLE OF JESUS AND MAKING DISCIPLES OF JESUS. THIS IS A CALL FOR EVERY FOLLOWER OF JESUS ALWAYS, SOITS OF NO SURPRISE THAT THIS IS CENTRAL TO OUR MISSION STATEMENT, THE ALTERNATIVE TO NOT BEING AND MAKING DISCIPLES IS DISOBEDIENCE.**
- 4. HAVING FUN | IT IS IMPORTANT TO US.**

WILDFIRE SEEKS TO IGNITE MEN AND WOMEN OF GOD INTO A DEEPER DISCIPLESHIP WITH CHRIST. DISCIPLESHIP MEANING ENCOUNTER WITH JESUS, BAPTISM AND LOCAL BODY PLUG IN. WILDFIRE ACTS AS THE DISCIPLESHIP BRANCH OF HOPE2FAMILIES.

THE WHY!

WHY WE DO WHAT WE DO

FOR EVERY WHAT THERE IS A WHY? AND THE WHY HAS TO BE THE MOTIVATION THAT DRIVES ANYTHING.

OUR WHY IS FOURFOLD:

- 1. BEING CONDUCTORS OF GOD'S LOVE IN OUR LIVES. WE ARE BEING TRANSFORMED AND EDUCATED IN GOD'S LOVE EVERYDAY, WE WANT TO BE CONDUITS OF GOD'S LOVE, NOT CULDESAC'S. FOR EVERY INTERNAL CHANGE, THERE IS AN EXTERNAL EXPRESSION PAIRED WITH IT.**
- 2. DAY TO DAY NEED. SO OFTEN OR NOT WE HEAR THE COMMON PHRASES REVERBERATE THROUGHOUT OUR CONVERSATIONS IN WORK AND UNI; MY RELATIONSHIP WITH GOD IS OKAY, I AM UP AND DOWN, I AM STRUGGLING, MY PRAYER LIFE ISN'T GOOD, MY DEVOTIONAL LIFE ISN'T GOOD, I AM OVERWHELMED, UNEQUIPPED! SHOULD WE SETTLE FOR THIS BEING THE NORMAL AND COMMON RHETORIC! No, at WILDFIRE WE ARE DISSATISFIED WITH THIS TO THE POINT OF MOBILISED CHANGE. WE WANT THE CONVERSATIONS TO BE SATURATED WITH JOY AND PASSION, ALL OF WHICH IS BIRTHED FROM GOD'S LOVE.**

WILDFIRE SEEKS TO IGNITE MEN AND WOMEN OF GOD INTO A DEEPER DISCIPLESHIP WITH CHRIST. DISCIPLESHIP MEANING ENCOUNTER WITH JESUS, BAPTISM AND LOCAL BODY PLUG IN. WILDFIRE ACTS AS THE DISCIPLESHIP BRANCH OF HOPE2FAMILIES.

THE WHY!

WHY WE DO WHAT WE DO

FOR EVERY WHAT THERE IS A WHY? AND THE WHY HAS TO BE THE MOTIVATION THAT DRIVES ANYTHING.

OUR WHY IS FOURFOLD:

- 3. SEEING A NEED AND MEETING A NEED. WE SEEN TO MUCH DISUNITY AND SO WANTED TO EMPHASISE THE IMPORTANCE OF UNITY AMONG GOD'S PEOPLE. WE SEEN A LACK OF UNDERSTANDING AND FOCUS ON EKKLESIA (CHURCH) AND WANTED TO HELP PEOPLE UNDERSTAND ITS IMPORTANCE.**
- 4. EVERYTHING HAS AND CONTINUES TO GROW LIKE A WILDFIRE. THE ORIGIN OF THIS NAME AND ETHOS IS COMPLETELY INSPIRED BY GOD AND IS WHAT GOD HAS LAID ON OUR HEARTS. WHEN WE LOOK AT THE HISTORY OF THIS CHARITY, WE SEE THE FULFILMENT OF WHAT JESUS TAUGHT ABOUT WITH REGARDS TO HIS KINGDOM BEING A MUSTARD SEED, BUT GROWING! WILDFIRE WAS SMALL, BUT LIKE THE KINGDOM GROWS, WE HAVE GROWN, BY HELPING GROW THE KINGDOM.**

WILDFIRE SEEKS TO IGNITE MEN AND WOMEN OF GOD INTO A DEEPER DISCIPLESHIP WITH CHRIST. DISCIPLESHIP MEANING ENCOUNTER WITH JESUS, BAPTISM AND LOCAL BODY PLUG IN. WILDFIRE ACTS AS THE DISCIPLESHIP BRANCH OF HOPE2FAMILIES.

THE HOW!

THE HOW WE DO IT

HOW THEN DO WE ACHIEVE OUR WHAT AND MEET OUR MOTIVATION, THAT IS OUR WHY!

OUR HOW IS FOURFOLD:

- 1. 1. DIVERSE ONLINE CONTENT. WE LIVE IN AN AGE OF TECHNOLOGY, SO WE UTILISE IT COMPLETELY FOR GOD.**
 - MONDAY/ BLOGS**
 - WEDNESDAY/ MINI SERIES**
 - FRIDAY/ PODCAST**
 - SUNDAY/ PRAISE**
- 2. DISCIPLESHIP PROGRAMS. THESE ARE THE MAIN EXPRESSIONS OF DISCIPLESHIP WITHIN OUR MINISTRY.**
 - PAUL AND TIMOTHY DISCIPLESHIP PROGRAM.**
 - SOW AND REAP DISCIPLESHIP PROGRAM.**
 - FOOTBALL DISCIPLESHIP PROGRAM.**

WILDFIRE SEEKS TO IGNITE MEN AND WOMEN OF GOD INTO A DEEPER DISCIPLESHIP WITH CHRIST. DISCIPLESHIP MEANING ENCOUNTER WITH JESUS, BAPTISM AND LOCAL BODY PLUG IN. WILDFIRE ACTS AS THE DISCIPLESHIP BRANCH OF HOPE2FAMILIES.

THE HOW!

THE HOW WE DO IT

HOW THEN DO WE ACHIEVE OUR WHAT AND MEET OUR MOTIVATION, THAT IS OUR WHY!

3. EVENTS. OUR BUILDING IS THE HUB FOR ALL OUR ACTIVITY! ALL OUR EVENTS!

ALL OUR RESOURCES!

- 'WILDFIRE NIGHTS'**
- 'HOUSE OF PRAYER'**
- 'WILDFIRE CHILL'**
- 'WILDFIRE HOTSPOTS' (SMALL GROUPS)**

4. TEAMS.

VOCATIONAL VACATION

WILDFIRE SEEKS TO IGNITE MEN AND WOMEN OF GOD INTO A DEEPER DISCIPLESHIP WITH CHRIST. DISCIPLESHIP MEANING ENCOUNTER WITH JESUS, BAPTISM AND LOCAL BODY PLUG IN. WILDFIRE ACTS AS THE DISCIPLESHIP BRANCH OF HOPE2FAMILIES.

THE WHERE!

THE WHERE YOU CAN FIND US

WHERE DO YOU GO FROM HERE? HOW CAN YOU GET INVOLVED OR TRACK WHAT WE WILL BE DOING?

OUR WHERE IS FOURFOLD:

SOCIAL MEDIA. YOU CAN FIND US ON ANY WIDELY USED SOCIAL MEDIA!

-OUR INSTAGRAM

WILDFIRE

[HTTPS://WWW.INSTAGRAM.COM/WILDFIREMINISTRY/](https://www.instagram.com/wildfireministry/)

-OUR FACEBOOK

WILDFIRE

[HTTPS://WWW.FACEBOOK.COM/DECIDEDISCIPLDECLARE](https://www.facebook.com/decidediscipledeclare)

-OUR TWITTER

WILDFIRE

[HTTPS://MOBILE.TWITTER.COM/SESSION/NEW](https://mobile.twitter.com/session/new)

WILDFIRE SEEKS TO IGNITE MEN AND WOMEN OF GOD INTO A DEEPER DISCIPLESHIP WITH CHRIST. DISCIPLESHIP MEANING ENCOUNTER WITH JESUS, BAPTISM AND LOCAL BODY PLUG IN. WILDFIRE ACTS AS THE DISCIPLESHIP BRANCH OF HOPE2FAMILIES.

-OUR TIKTOK

WILDFIRE

[HTTPS://WWW.TIKTOK.COM/@WILDFIREMINISTRIES1](https://www.tiktok.com/@wildfireministries1)

-OUR VISCO

WILDFIRE

-OUR SNAPCHAT

WILDFIRE

-OUR LINKEDIN

WILDFIRE

WILDFIRE SEEKS TO IGNITE MEN AND WOMEN OF GOD INTO A DEEPER DISCIPLESHIP WITH CHRIST. DISCIPLESHIP MEANING ENCOUNTER WITH JESUS, BAPTISM AND LOCAL BODY PLUG IN. WILDFIRE ACTS AS THE DISCIPLESHIP BRANCH OF HOPE2FAMILIES.

OUR PODCAST

WILDFIRE PODCAST

WILDFIRE PODCAST HAS A FOCUS OF SIMPLY LOOKING AT GOD'S WORD THROUGH A CONVERSATION. OUR ASPIRATION IS TO UPLOAD ONE PODCAST A WEEK, IN WHICH WE INTERRELATE BETWEEN BIBLE BOOKS AND BIBLE TOPICS. WITHIN TWO YEARS WE HOPE TO HAVE DONE ALL THE BOOKS OF THE BIBLE AND ADDRESSED SOME OF THE KEY ISSUES THAT ARE THE CENTRAL NERVOUS SYSTEM OF OUR SOCIETY.

[HTTPS://WILDFIREPODCAST.BUZZSPROUT.COM](https://wildfirepodcast.buzzsprout.com)

OUR YOUTUBE

TAILORED THEOLOGY

THIS IS OUR YOUTUBE CHANNEL, HERE YOU CAN FIND MORE CONTENT! ON THIS CHANNEL WE COVER APOLOGETICS, EXEGESIS, EXPOSITORY TEACHING, EVANGELISM, CULTURAL ISSUES AND EVERYTHING AND ANYTHING AS IT RELATES TO THE BIBLE.

[HTTPS://WWW.YOUTUBE.COM/CHANNEL/UCi7UAV0BKBRWOFDG2OUXEEW](https://www.youtube.com/channel/UCi7UAV0BKBRWOFDG2OUXEEW)

**WILDFIRE SEEKS TO IGNITE MEN AND WOMEN OF GOD INTO A DEEPER
DISCIPLESHIP WITH CHRIST. DISCIPLESHIP MEANING ENCOUNTER WITH
JESUS, BAPTISM AND LOCAL BODY PLUG IN. WILDFIRE ACTS AS THE
DISCIPLESHIP BRANCH OF HOPE2FAMILIES.**

**OUR PRAISE TEAM. YOU CAN FIND ALL OF OUR PRAISE LEADERS ON MORE THAN 11
STREAMING PLATFORMS!**

SPOTIFY

APPLE MUSIC

YOUTUBE

TIDAL

[HTTPS://FANLINK.TO/WILDFIREPRAISEW](https://fanlink.to/wildfirepraisew)

**OUR WEBSITE. YOU CAN FIND EVERYTHING YOU NEED TO KNOW ABOUT US!
LEADERS, EVENTS AND MORE.**

[HTTPS://WWW.WILDFIREMINISTRIES.ONLINE](https://www.wildfireministries.online)

EVERYTHING IN ONE LINK: [HTTPS://LINKTR.EE/WILDFIREMINISTRIES](https://linktr.ee/wildfireministries)

IGNITING MEN AND WOMEN OF GOD INTO A DEEPER DISCIPLESHIP.

DISCIPLESHIP

ENCOUNTER WITH JESUS

BAPTISM

LOCAL BODY PLUG IN

**WE ARE NOT A LOCAL BODY, BUT ARE APART OF THE GLOBAL BODY THAT IS
USED AS A TOOL FOR THE LOCAL BODY.**

WILDFIRE SEEKS TO IGNITE MEN AND WOMEN OF GOD INTO A DEEPER DISCIPLESHIP WITH CHRIST. DISCIPLESHIP MEANING ENCOUNTER WITH JESUS, BAPTISM AND LOCAL BODY PLUG IN. WILDFIRE ACTS AS THE DISCIPLESHIP BRANCH OF HOPE2FAMILIES.



FOUNDED IN 2019, HOPE2FAMILIES IS A REGISTERED CHARITY THAT SEEKS TO PROVIDE PRACTICAL SUPPORT FOR THOSE WITH CANCER AND IN WIDER SUFFERING. OUR CHARITY CONTAINS WILDFIRE, WHICH ACTS AS THE YOUTH BRANCH OF THIS CHARITY.



HOPE TO
WHAT?
WHAT?

ADDRESSING PERCEPTION
SHOWING THE REALITY
WHAT HOPE2FAMILIES IS AND ISN'T COMMUNICATING CLEARLY
PROVIDING CLARITY BEHIND THE SCENES

FOUNDED IN 2019, HOPE2FAMILIES IS A REGISTERED CHARITY THAT SEEKS TO PROVIDE PRACTICAL SUPPORT FOR THOSE WITH CANCER AND IN WIDER SUFFERING. OUR CHARITY CONTAINS WILDFIRE, WHICH ACTS AS THE YOUTH BRANCH OF THIS CHARITY.

VOLUNTEER ACCOUNTABILITY



APPROACH NECESSARY AREAS OF ACCOUNTABILITY DEPENDING ON THE NATURE OR SEVERITY OF THE OFFENCE.

FOUNDED IN 2019, HOPE2FAMILIES IS A REGISTERED CHARITY THAT SEEKS TO PROVIDE PRACTICAL SUPPORT FOR THOSE WITH CANCER AND IN WIDER SUFFERING. OUR CHARITY CONTAINS WILDFIRE, WHICH ACTS AS THE YOUTH BRANCH OF THIS CHARITY.

VOLUNTEER ACCOUNTABILITY THE ROLE

1
LOW RESPONSIBILITY

2
LOW EXPECTATION

3
LOW COMMITMENT

ALL ACCOUNTABILITY SHOULD BE DONE IN THE CONTEXT OF VOLUNTEER AND FAMILY AS THE DYNAMIC. FAMILY, SO WE WANT TO LOVE THEM ENOUGH TO WOUND THEM: VOLUNTEERS, WE UNDERSTAND THAT THEY HAVE A LEVEL OF INVOLVMENT IN THE CHARITY AND SO WE WANT TO ENSURE THEIR BEHAVIOUR ALIGNS WITH OUR CODE OF CONDUCT.

FOUNDED IN 2019, HOPE2FAMILIES IS A REGISTERED CHARITY THAT SEEKS TO PROVIDE PRACTICAL SUPPORT FOR THOSE WITH CANCER AND IN WIDER SUFFERING. OUR CHARITY CONTAINS WILDFIRE, WHICH ACTS AS THE YOUTH BRANCH OF THIS CHARITY.

VOLUNTEER ACCOUNTABILITY THE ROLE

**4 DO WHAT YOU CAN
WHEN YOU CAN**

**5 LEAVE WHEN YOU
WANT**

**6 KEEP THE PRIORITY
THE PRIORITY**

THE ROLE OF A VOLUNTEER IS AN ADDITIONAL SPACE THAT COMES WITH LITTLE BAGGAGE FOR PEOPLE TO STEWARD THEIR GIFTS AND ENGAGE IN SOMETHING THAT IS PRETTY UNIQUE. IT SHOULD NEVER DETRACT AWAY FROM THE PRIORITY WHICH IS THE LOCAL BODY, JOB, UNI ETC. ACCOUNTABLY WILL ENSURE THAT DOESBNT TAKE PLACE.

FOUNDED IN 2019, HOPE2FAMILIES IS A REGISTERED CHARITY THAT SEEKS TO PROVIDE PRACTICAL SUPPORT FOR THOSE WITH CANCER AND IN WIDER SUFFERING. OUR CHARITY CONTAINS WILDFIRE, WHICH ACTS AS THE YOUTH BRANCH OF THIS CHARITY.

VOLUNTEER ACCOUNTABILITY

1 **RECOGNISE**

2 **WEIGH UP**

3 **RESPOND**

WE RECOGNISE THE AREA OF CONCERN, WE WEIGH IT UP, TAKING INTO CONSIDERATION CHARACTER, MOTIVE, ACTION AND EFFECT. RESPONSE WILL VARY, WILL BE DONE IN HOUSE AS FAMILY AND IN THE CONTEXT OF THEIR COMMITMENT AS A VOLUNTEER. AFTER THE RULE OF 3, OR IF THE CONCERN IS SEVERE, THE PERSON AND THE PERSONS LOCAL BODY WILL BE INFORMED.

4

FOUNDED IN 2019, HOPE2FAMILIES IS A REGISTERED CHARITY THAT SEEKS TO PROVIDE PRACTICAL SUPPORT FOR THOSE WITH CANCER AND IN WIDER SUFFERING. OUR CHARITY CONTAINS WILDFIRE, WHICH ACTS AS THE YOUTH BRANCH OF THIS CHARITY.

VOLUNTEER ACCOUNTABILITY

1 SIN

2 CONSCIENCE

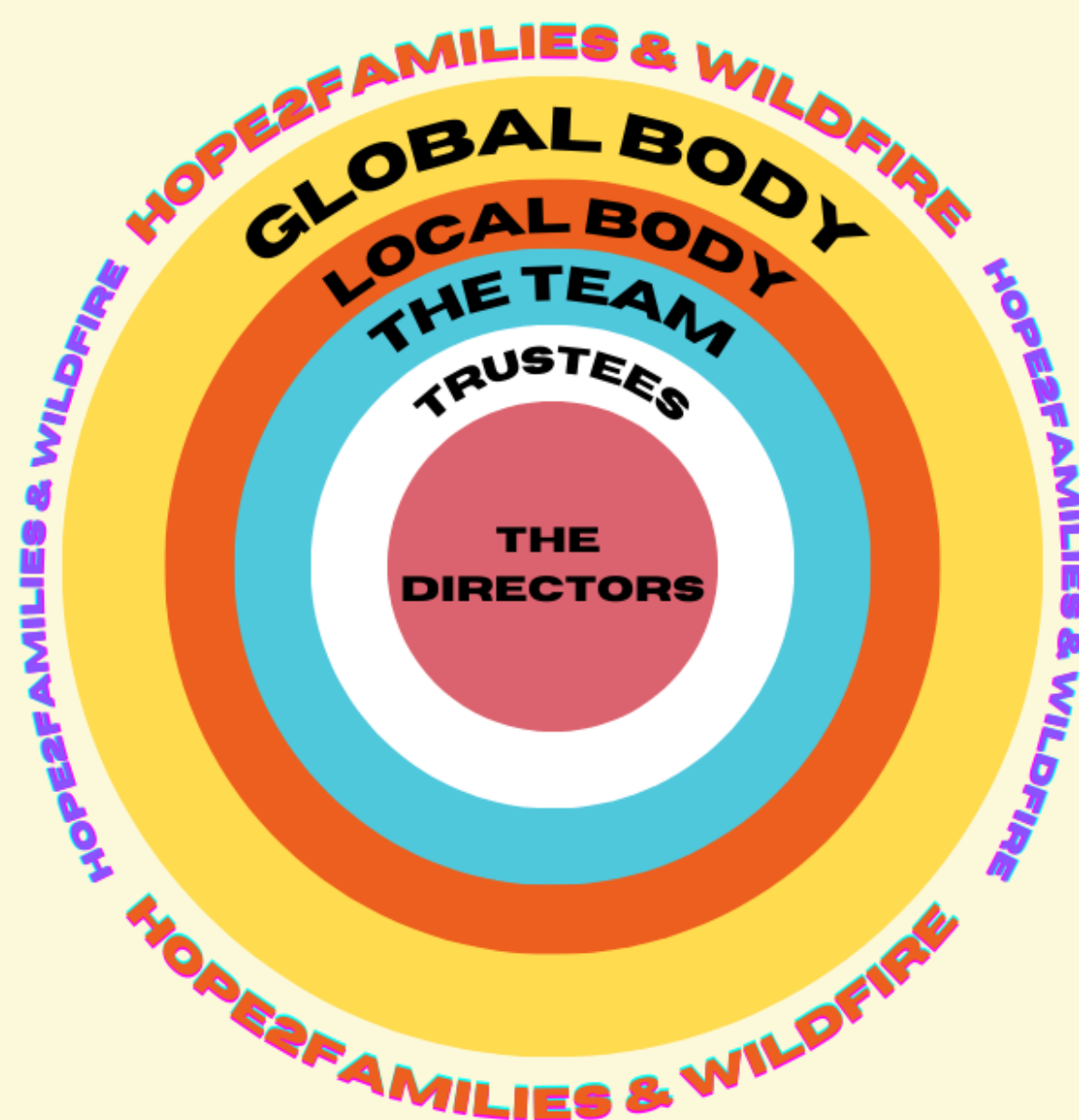
3 PREFERENCE

DETERMINE WHERE THE AREA OF CONCERN LANDS.

5

FOUNDED IN 2019, HOPE2FAMILIES IS A REGISTERED CHARITY THAT SEEKS TO PROVIDE PRACTICAL SUPPORT FOR THOSE WITH CANCER AND IN WIDER SUFFERING. OUR CHARITY CONTAINS WILDFIRE, WHICH ACTS AS THE YOUTH BRANCH OF THIS CHARITY.

**DEALING WITH CRITICISM
AND DISAGREEMENT**



**WHERE DOES THE PERSON WITH THE
DISAGREEMENT OR CRITICISM FIND
THEMSELVES IN THE CIRCLE OF COMMUNITY**

FOUNDED IN 2019, HOPE2FAMILIES IS A REGISTERED CHARITY THAT SEEKS TO PROVIDE PRACTICAL SUPPORT FOR THOSE WITH CANCER AND IN WIDER SUFFERING. OUR CHARITY CONTAINS WILDFIRE, WHICH ACTS AS THE YOUTH BRANCH OF THIS CHARITY.

DEALING WITH CRITICISM AND DISAGREEMENT

1 **RECOGNISE**

2 **WEIGH UP**

3 **RESPOND**

WHAT WE DO WITH THE CRITICISM OR DISAGREEMENT, WE DON'T INVALIDATE, NOR ARE WE DICTATED BY IT. BUT WE RECOGNISE IT, WEIGH IT UP AND THEN RESPOND.

FOUNDED IN 2019, HOPE2FAMILIES IS A REGISTERED CHARITY THAT SEEKS TO PROVIDE PRACTICAL SUPPORT FOR THOSE WITH CANCER AND IN WIDER SUFFERING. OUR CHARITY CONTAINS WILDFIRE, WHICH ACTS AS THE YOUTH BRANCH OF THIS CHARITY.

DEALING WITH CRITICISM AND DISAGREEMENT

1 SIN

2 CONSCIENCE

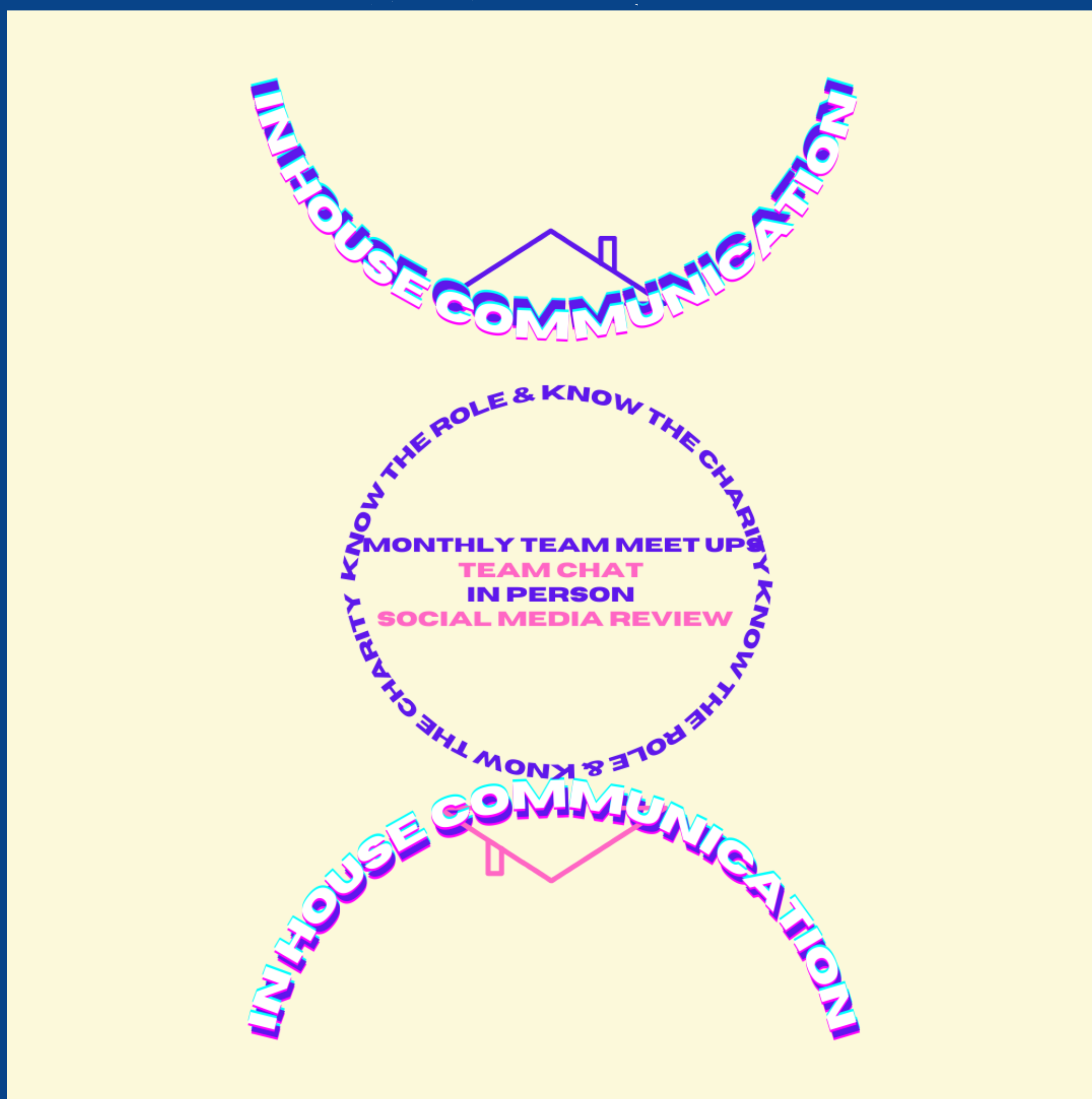
3 PREFERENCE

WHAT WE DO WITH THE CRITICISM OR DISAGREEMENT, WE DON'T INVALIDATE, NOR ARE WE DICTATED BY IT. BUT WE RECOGNISE IT, WEIGH IT UP AND THEN RESPOND. IS IT BIBLICAL OR UNBIBLICAL? IS IT PERMISSABLE OR BENEFICIAL? IS IT THE INDIVIDUAL PERSON?

FOUNDED IN 2019, HOPE2FAMILIES IS A REGISTERED CHARITY THAT SEEKS TO PROVIDE PRACTICAL SUPPORT FOR THOSE WITH CANCER AND IN WIDER SUFFERING. OUR CHARITY CONTAINS WILDFIRE, WHICH ACTS AS THE YOUTH BRANCH OF THIS CHARITY.



FOUNDED IN 2019, HOPE2FAMILIES IS A REGISTERED CHARITY THAT SEEKS TO PROVIDE PRACTICAL SUPPORT FOR THOSE WITH CANCER AND IN WIDER SUFFERING. OUR CHARITY CONTAINS WILDFIRE, WHICH ACTS AS THE YOUTH BRANCH OF THIS CHARITY.



FOUNDED IN 2019, HOPE2FAMILIES IS A REGISTERED CHARITY THAT SEEKS TO PROVIDE PRACTICAL SUPPORT FOR THOSE WITH CANCER AND IN WIDER SUFFERING. OUR CHARITY CONTAINS WILDFIRE, WHICH ACTS AS THE YOUTH BRANCH OF THIS CHARITY.

WHY WE DOING THIS??

1

PERCEPTION

THE WAY IN WHICH SOMETHING IS REGARDED, UNDERSTOOD, OR INTERPRETED.

PERCEPTION IS NOT REALITY, THE PHARISEES PERCEPTION WAS JESUS' POWER CAME FROM THE DEVIL, WHEN IN REALITY, JESUS WAS GOD!

REALITY

WE WANT TO COMMUNICATE CLEARLY AND TRANSPARENTLY WHAT WILDFIRE IS AND ISN'T. TO BRING CLARITY AND REALITY TO EXISTING PERCEPTIONS.

WHY PERCEIVE WHEN YOU CAN KNOW.

FOUNDED IN 2019, HOPE2FAMILIES IS A REGISTERED CHARITY THAT SEEKS TO PROVIDE PRACTICAL SUPPORT FOR THOSE WITH CANCER AND IN WIDER SUFFERING. OUR CHARITY CONTAINS WILDFIRE, WHICH ACTS AS THE YOUTH BRANCH OF THIS CHARITY.

PERCEPTION VS REALITY?

2

**| OUR COMMUNICATION, IN HOUSE AND
OUT OF HOUSE.**

| OUR ACCOUNTABILITY EXPLAINED

| DEALING WITH DISAGREEMENT

| WHATS A VOLUNTEER?

| WHAT IS WILDFIRE?

| WHAT WILDFIRE ISN'T

| WHY WILDFIRE?

**| HOW DOES WILDFIRE ACCOMPLISH
WHY IT EXISTS?**

| US

| YOU

| PERCEPTION AND REALITY

FOUNDED IN 2019, HOPE2FAMILIES IS A REGISTERED CHARITY THAT SEEKS TO PROVIDE PRACTICAL SUPPORT FOR THOSE WITH CANCER AND IN WIDER SUFFERING. OUR CHARITY CONTAINS WILDFIRE, WHICH ACTS AS THE YOUTH BRANCH OF THIS CHARITY.

3

PERCEPTION

HOPE2FAMILIES IS A CHURCH?

REALITY

HOPE2FAMILIES IS NOT A CHURCH

PERCEPTION

THE LOCAL BODY IS WHAT MATTERS; HOPE2FAMILIES DISTRACTS AND DETRACTS AWAY FROM THE LOCAL BODY.

REALITY

HOPE2FAMILIES FINDS ITSELF AMONG MILLIONS OF OTHER CHARITIES THAT EXIST OUTSIDE THE LOCAL BODY. OUR FOCUS IS TO BE A TOOL FOR THE LOCAL BODY, THE LOCAL BODY USES US TO HELP THEIR CHURCH. VOLUNTEERS, PEOPLE WHO FOLLOW OR THOSE INVOLVED IN HOPE2FAMILIES WILL KNOW THE IMPORTANCE OF LOCAL BODY PLUG IN. WE WANT TO HELP PEOPLE GET PLUGGED IN TO A LOCAL BODY WHERE INTIMATE DISCIPLESHIP CAN TAKE PLACE. WE WANT TO CREATE A NETWORK OF UNITY AMONG CHARITIES AND CHURCHES, THEY SHOULD NOT BE IN CONFLICT WITH ONE ANOTHER.

FOUNDED IN 2019, HOPE2FAMILIES IS A REGISTERED CHARITY THAT SEEKS TO PROVIDE PRACTICAL SUPPORT FOR THOSE WITH CANCER AND IN WIDER SUFFERING. OUR CHARITY CONTAINS WILDFIRE, WHICH ACTS AS THE YOUTH BRANCH OF THIS CHARITY.

4

PERCEPTION

NO SAFEGUARDING OR CONCERN ABOUT PRACTICALITIES?

REALITY

WE HAVE OVER 200 PLUS PAGES OF SAFEGUARDING, A MISSION STATEMENT, A CONSTITUTION, AN ACCOUNTANT, A LEGAL ADVISOR, TRUSTEES, DIRECTORS, VOLUNTEERS, TEAM PLANNING, TEAM CHAT, DATA PROTECTION, RECRUITMENT POLICY, INDUCTIONS, INCIDENT REPORT FORMS, PRAYER, ASKING FOR WISDOM, QUARTELY REVIEWS, MONTHLY PUBLIC REVIEWS, PUBLIC COMPANY PROFILE.

PERCEPTION

ITS ALL DONE BY AND IS ABOUT ONE PERSON?

REALITY

HOPE2FAMILIES HAS OVER 10 VOLUNTEERS, 10 TRUSTEES, 3 DIRECTORS, WILDFIRE HAS OVER 25 VOLUNTEERS. EVENTS REQUIRE AND HAVE BEEN DONE WITH A TEAM OF AT LEAST 12-15 PEOPLE. ONLINE CONTACT HAS INCLUDED 100S OF PEOPLE.

FOUNDED IN 2019, HOPE2FAMILIES IS A REGISTERED CHARITY THAT SEEKS TO PROVIDE PRACTICAL SUPPORT FOR THOSE WITH CANCER AND IN WIDER SUFFERING. OUR CHARITY CONTAINS WILDFIRE, WHICH ACTS AS THE YOUTH BRANCH OF THIS CHARITY.

5

PERCEPTION

SOCIAL MEDIA IS ROGUE AND RANDOM?

REALITY

ONLINE CONTENT INCLUDES PODCASTS, BLOGS, MINI SERIES, EVENT PROMO, EVENT RECAP, SONGS COME FROM WITHIN THE TEAM. POSTS ARE PRESENTED TO THE DIRECTORS, TRUSTEES AND TEAM BEFORE UPLOADING AND HAVE BEEN TALKED ABOUT AT TEAM MEETINGS,

PERCEPTION

EVENTS ARE ROGUE AND RANDOM?

REALITY

TEAM PLANNING PROCEEDS EVENTS, EVENTS ARE COMMUNICATED TO DIRECTORS, TRUSTEES AND THE TEAM. TEAM PLANNING IS ONCE A MONTH.

FOUNDED IN 2019, HOPE2FAMILIES IS A REGISTERED CHARITY THAT SEEKS TO PROVIDE PRACTICAL SUPPORT FOR THOSE WITH CANCER AND IN WIDER SUFFERING. OUR CHARITY CONTAINS WILDFIRE, WHICH ACTS AS THE YOUTH BRANCH OF THIS CHARITY.

6

US

EVERYTHING THAT EXISTS HAS PROBLEMS, HOPE2FAMILIES EXISTS AND SO HAS PROBLEMS.

WITH OUR ACCOUNTABILITY WE RECOGNISE OUR PROBLEMS AND COME UP WITH SOLUTIONS.

WE TRULY LOVE JESUS WITH OUR WHOLE HEART AND DESIRE TO SERVE HIM. THE EVIDENCE IS FOUND WITH THE HUNDREDS OF CHURCHES, CHARITIES AND PARACHURCH ORGANISATIONS. WE HAVE HEARD 10,000S OF STORIES OF PEOPLE WHO COME TO KNOW JESUS, HAVE GROWN CLOSER TO JESUS, HAVE BEEN PRACTICALLY HELPED, WE CONTINUE TO SERVE CHRIST AS HE CALLS US.

WE ARE CONSTANTLY PRAYNG, WE ARE CONSTANTLY PRAISING, WE WANT UNITY, TRUTH AND LOVE TO PREVAIL.

WE WANT TO CREATE SPACES FOR PEOPLE TO COME TO KNOW JESUS, TO BE BAPTISED AND THEN TO BE PLUGGED INTO A LOCAL BODY. WE WANT AND HAVE TO DO THIS WITH LOCAL BODIES, ELDERS, DEACONS, OTHER CHARITIES.

WE THINK BIBLICALLY ABOUT EVERYTHING.

FOUNDED IN 2019, HOPE2FAMILIES IS A REGISTERED CHARITY THAT SEEKS TO PROVIDE PRACTICAL SUPPORT FOR THOSE WITH CANCER AND IN WIDER SUFFERING. OUR CHARITY CONTAINS WILDFIRE, WHICH ACTS AS THE YOUTH BRANCH OF THIS CHARITY.

7

YOU

SEE FOR YOURSELF, COME TO OUR EVENTS, SPEAK TO THE TRUSTEES, THE DIRECTORS AND THE FOUNDERS IN PERSON.

KNOW CHARACTER, KNOW MOTIVES, KNOW ACTIONS AND THEIR EFFECTS BEFORE ESTABLISHING A PERCEPTION

DON'T SETTLE FOR PERCEPTION BUT GO WITH REALITY.

ASSUME THE BEST, PRESERVE, PROTECT, HOPE AND REJOICE, IN THIS WAY WE LOVE ONE ANOTHER.

EXTEND GRACE, PATIENCE, MERCY.

PRESERVE UNITY, SEEK TRUTH AND DO ALL THIS IN LOVE.

REMEMBER FAMILY AND THAT JESUS CALLS US TO LOVE ONE ANOTHER AS HE LOVE US.

DISENGAGE FROM WILDFIRE IF YOU FEEL LIKE IT DEFILES YOUR CONSCIENCE, IS UNEDIFYING FOR CHRIST AND DOESN'T HELP YOU.

FOUNDED IN 2019, HOPE2FAMILIES IS A REGISTERED CHARITY THAT SEEKS TO PROVIDE PRACTICAL SUPPORT FOR THOSE WITH CANCER AND IN WIDER SUFFERING. OUR CHARITY CONTAINS WILDFIRE, WHICH ACTS AS THE YOUTH BRANCH OF THIS CHARITY.

8

**DO WE WANT GODS
KINGDOM ADVANCED,
OR DO WE WANT GODS
KINGDOM ADVANCED
IN US?**

**A WIN IN THE KINGDOM
IS A WIN FOR THE BODY.**

**WE HAVE TO LEARN TO
ACKNOWLEDGE AND
CELEBRATE WHAT IS A
WORK OF CHRIST.**

**IF YOU HAVE A
PROBLEM RING US, IF
YOU DON'T HAVE OUR
NUMBER YOU DON'T
KNOW US WELL
ENOUGH TO HAVE A
PROBLEM.**

**WITH EVERY PROBLEM
YOU SEE, SEE TWO MORE
SOLUTIONS.**

**WILDFIRE SEEKS TO IGNITE MEN AND WOMEN OF GOD INTO A DEEPER
DISCIPLESHIP WITH CHRIST. DISCIPLESHIP MEANING ENCOUNTER WITH
JESUS, BAPTISM AND LOCAL BODY PLUG IN. WILDFIRE ACTS AS THE
DISCIPLESHIP BRANCH OF HOPE2FAMILIES.**



**ADDRESSING PERCEPTION
SHOWING THE REALITY
WHAT WILDFIRE IS AND ISN'T COMMUNICATING CLEARLY
PROVIDING CLARITY BEHIND THE SCENES**

WILDFIRE SEEKS TO IGNITE MEN AND WOMEN OF GOD INTO A DEEPER DISCIPLESHIP WITH CHRIST. DISCIPLESHIP MEANING ENCOUNTER WITH JESUS, BAPTISM AND LOCAL BODY PLUG IN. WILDFIRE ACTS AS THE DISCIPLESHIP BRANCH OF HOPE2FAMILIES.

VOLUNTEER ACCOUNTABILITY



APPROACH NECESSARY AREAS OF ACCOUNTABILITY DEPENDING ON THE NATURE OR SEVERITY OF THE OFFENCE.

WILDFIRE SEEKS TO IGNITE MEN AND WOMEN OF GOD INTO A DEEPER DISCIPLESHIP WITH CHRIST. DISCIPLESHIP MEANING ENCOUNTER WITH JESUS, BAPTISM AND LOCAL BODY PLUG IN. WILDFIRE ACTS AS THE DISCIPLESHIP BRANCH OF HOPE2FAMILIES.

VOLUNTEER ACCOUNTABILITY THE ROLE

1
LOW RESPONSIBILITY

2
LOW EXPECTATION

3
LOW COMMITMENT

ALL ACCOUNTABILITY SHOULD BE DONE IN THE CONTEXT OF VOLUNTEER AND FAMILY AS THE DYNAMIC. FAMILY, SO WE WANT TO LOVE THEM ENOUGH TO WOUND THEM: VOLUNTEERS, WE UNDERSTAND THAT THEY HAVE A LEVEL OF INVOLVMENT IN THE CHARITY AND SO WE WANT TO ENSURE THEIR BEHAVIOUR ALIGNS WITH OUR CODE OF CONDUCT.

WILDFIRE SEEKS TO IGNITE MEN AND WOMEN OF GOD INTO A DEEPER DISCIPLESHIP WITH CHRIST. DISCIPLESHIP MEANING ENCOUNTER WITH JESUS, BAPTISM AND LOCAL BODY PLUG IN. WILDFIRE ACTS AS THE DISCIPLESHIP BRANCH OF HOPE2FAMILIES.

VOLUNTEER ACCOUNTABILITY THE ROLE

**4 DO WHAT YOU CAN
WHEN YOU CAN**

**5 LEAVE WHEN YOU
WANT**

**6 KEEP THE PRIORITY
THE PRIORITY**

THE ROLE OF A VOLUNTEER IS AN ADDITIONAL SPACE THAT COMES WITH LITTLE BAGGAGE FOR PEOPLE TO STEWARD THEIR GIFTS AND ENGAGE IN SOMETHING THAT IS PRETTY UNIQUE. IT SHOULD NEVER DETRACT AWAY FROM THE PRIORITY WHICH IS THE LOCAL BODY, JOB, UNI ETC. ACCOUTABLY WILL ENSURE THAT DOESBNT TAKE PLACE.

WILDFIRE SEEKS TO IGNITE MEN AND WOMEN OF GOD INTO A DEEPER DISCIPLESHIP WITH CHRIST. DISCIPLESHIP MEANING ENCOUNTER WITH JESUS, BAPTISM AND LOCAL BODY PLUG IN. WILDFIRE ACTS AS THE DISCIPLESHIP BRANCH OF HOPE2FAMILIES.

VOLUNTEER ACCOUNTABILITY

1 **RECOGNISE**

2 **WEIGH UP**

3 **RESPOND**

WE RECOGNISE THE AREA OF CONCERN, WE WEIGH IT UP, TAKING INTO CONSIDERATION CHARACTER, MOTIVE, ACTION AND EFFECT. RESPONSE WILL VARY, WILL BE DONE IN HOUSE AS FAMILY AND IN THE CONTEXT OF THEIR COMMITMENT AS A VOLUNTEER. AFTER THE RULE OF 3, OR IF THE CONCERN IS SEVERE, THE PERSON AND THE PERSONS LOCAL BODY WILL BE INFORMED.

4

WILDFIRE SEEKS TO IGNITE MEN AND WOMEN OF GOD INTO A DEEPER DISCIPLESHIP WITH CHRIST. DISCIPLESHIP MEANING ENCOUNTER WITH JESUS, BAPTISM AND LOCAL BODY PLUG IN. WILDFIRE ACTS AS THE DISCIPLESHIP BRANCH OF HOPE2FAMILIES.

VOLUNTEER ACCOUNTABILITY

1 SIN

2 CONSCIENCE

3 PREFERENCE

DETERMINE WHERE THE AREA OF CONCERN LANDS.

WILDFIRE SEEKS TO IGNITE MEN AND WOMEN OF GOD INTO A DEEPER DISCIPLESHIP WITH CHRIST. DISCIPLESHIP MEANING ENCOUNTER WITH JESUS, BAPTISM AND LOCAL BODY PLUG IN. WILDFIRE ACTS AS THE DISCIPLESHIP BRANCH OF HOPE2FAMILIES.

**DEALING WITH CRITICISM
AND DISAGREEMENT**



**WHERE DOES THE PERSON WITH THE
DISAGREEMENT OR CRITICISM FIND
THEMSELVES IN THE CIRCLE OF COMMUNITY**

WILDFIRE SEEKS TO IGNITE MEN AND WOMEN OF GOD INTO A DEEPER DISCIPLESHIP WITH CHRIST. DISCIPLESHIP MEANING ENCOUNTER WITH JESUS, BAPTISM AND LOCAL BODY PLUG IN. WILDFIRE ACTS AS THE DISCIPLESHIP BRANCH OF HOPE2FAMILIES.

DEALING WITH CRITICISM AND DISAGREEMENT

1 **RECOGNISE**

2 **WEIGH UP**

3 **RESPOND**

WHAT WE DO WITH THE CRITICISM OR DISAGREEMENT, WE DON'T INVALIDATE, NOR ARE WE DICTATED BY IT. BUT WE RECOGNISE IT, WEIGH IT UP AND THEN RESPOND.

WILDFIRE SEEKS TO IGNITE MEN AND WOMEN OF GOD INTO A DEEPER DISCIPLESHIP WITH CHRIST. DISCIPLESHIP MEANING ENCOUNTER WITH JESUS, BAPTISM AND LOCAL BODY PLUG IN. WILDFIRE ACTS AS THE DISCIPLESHIP BRANCH OF HOPE2FAMILIES.

DEALING WITH CRITICISM AND DISAGREEMENT

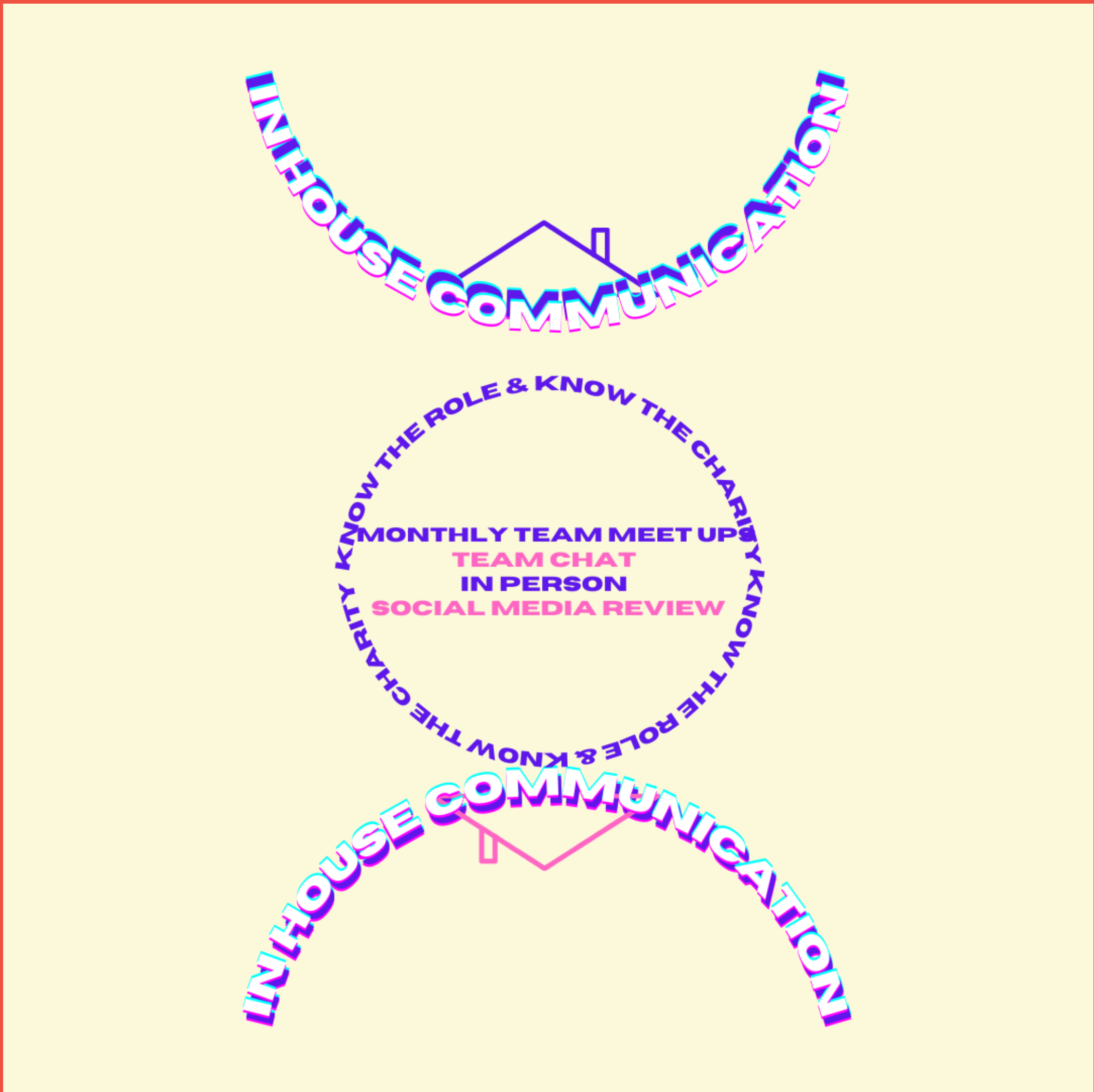
1 SIN

2 CONSCIENCE

3 PREFERENCE

WHAT WE DO WITH THE CRITICISM OR DISAGREEMENT, WE DON'T INVALIDATE, NOR ARE WE DICTATED BY IT. BUT WE RECOGNISE IT, WEIGH IT UP AND THEN RESPOND. IS IT BIBLICAL OR UNBIBLICAL? IS IT PERMISSABLE OR BENEFICIAL? IS IT THE INDIVIDUAL PERSON?

WILDFIRE SEEKS TO IGNITE MEN AND WOMEN OF GOD INTO A DEEPER DISCIPLESHIP WITH CHRIST. DISCIPLESHIP MEANING ENCOUNTER WITH JESUS, BAPTISM AND LOCAL BODY PLUG IN. WILDFIRE ACTS AS THE DISCIPLESHIP BRANCH OF HOPE2FAMILIES.



WILDFIRE SEEKS TO IGNITE MEN AND WOMEN OF GOD INTO A DEEPER DISCIPLESHIP WITH CHRIST. DISCIPLESHIP MEANING ENCOUNTER WITH JESUS, BAPTISM AND LOCAL BODY PLUG IN. WILDFIRE ACTS AS THE DISCIPLESHIP BRANCH OF HOPE2FAMILIES.



WILDFIRE SEEKS TO IGNITE MEN AND WOMEN OF GOD INTO A DEEPER DISCIPLESHIP WITH CHRIST. DISCIPLESHIP MEANING ENCOUNTER WITH JESUS, BAPTISM AND LOCAL BODY PLUG IN. WILDFIRE ACTS AS THE DISCIPLESHIP BRANCH OF HOPE2FAMILIES.

WHY WE DOING THIS??

1

PERCEPTION

THE WAY IN WHICH SOMETHING IS REGARDED, UNDERSTOOD, OR INTERPRETED.

PERCEPTION IS NOT REALITY, THE PHARISEES PERCEPTION WAS JESUS' POWER CAME FROM THE DEVIL, WHEN IN REALITY, JESUS WAS GOD!

REALITY

WE WANT TO COMMUNICATE CLEARLY AND TRANSPARENTLY WHAT WILDFIRE IS AND ISN'T. TO BRING CLARITY AND REALITY TO EXISTING PERCEPTIONS.

WHY PERCEIVE WHEN YOU CAN KNOW.

WILDFIRE SEEKS TO IGNITE MEN AND WOMEN OF GOD INTO A DEEPER DISCIPLESHIP WITH CHRIST. DISCIPLESHIP MEANING ENCOUNTER WITH JESUS, BAPTISM AND LOCAL BODY PLUG IN. WILDFIRE ACTS AS THE DISCIPLESHIP BRANCH OF HOPE2FAMILIES.

PERCEPTION VS REALITY?

2

**| OUR COMMUNICATION, IN HOUSE AND
OUT OF HOUSE.**

| OUR ACCOUNTABILITY EXPLAINED

| DEALING WITH DISAGREEMENT

| WHATS A VOLUNTEER?

| WHAT IS WILDFIRE?

| WHAT WILDFIRE ISN'T

| WHY WILDFIRE?

**| HOW DOES WILDFIRE ACCOMPLISH
WHY IT EXISTS?**

| US

| YOU

| PERCEPTION AND REALITY

WILDFIRE SEEKS TO IGNITE MEN AND WOMEN OF GOD INTO A DEEPER DISCIPLESHIP WITH CHRIST. DISCIPLESHIP MEANING ENCOUNTER WITH JESUS, BAPTISM AND LOCAL BODY PLUG IN. WILDFIRE ACTS AS THE DISCIPLESHIP BRANCH OF HOPE2FAMILIES.

3

PERCEPTION

WILDFIRE IS A CHURCH?

REALITY

WILDFIRE IS **NOT** A CHURCH

PERCEPTION

THE LOCAL BODY IS WHAT MATTERS; WILDFIRE DISTRACTS AND DETRACTS AWAY FROM THE LOCAL BODY.

REALITY

WILDFIRE FINDS ITSELF AMONG MILLIONS OF OTHER CHARITIES THAT EXIST OUTSIDE THE LOCAL BODY. OUR FOCUS IS TO BE A **TOOL** FOR THE **LOCAL BODY**, THE LOCAL BODY USES US TO HELP THEIR CHURCH. VOLUNTEERS, PEOPLE WHO FOLLOW OR THOSE INVOLVED IN WILDFIRE WILL KNOW **THE IMPORTANCE OF LOCAL BODY PLUG IN**. WE WANT TO **HELP PEOPLE GET PLUGGED IN TO A LOCAL BODY** WHERE INTIMATE DISCIPLESHIP CAN TAKE PLACE. WE WANT TO **CREATE A NETWORK OF UNITY AMONG CHARITIES AND CHURCHES**, THEY SHOULD NOT BE IN CONFLICT WITH ONE ANOTHER.

WILDFIRE SEEKS TO IGNITE MEN AND WOMEN OF GOD INTO A DEEPER DISCIPLESHIP WITH CHRIST. DISCIPLESHIP MEANING ENCOUNTER WITH JESUS, BAPTISM AND LOCAL BODY PLUG IN. WILDFIRE ACTS AS THE DISCIPLESHIP BRANCH OF HOPE2FAMILIES.

4

PERCEPTION

NO SAFEGUARDING OR CONCERN ABOUT PRACTICALITIES?

REALITY

WE HAVE OVER 200 PLUS PAGES OF SAFEGUARDING, A MISSION STATEMENT, A CONSTITUTION, AN ACCOUNTANT, A LEGAL ADVISOR, TRUSTEES, DIRECTORS, VOLUNTEERS, TEAM PLANNING, TEAM CHAT, DATA PROTECTION, RECRUITMENT POLICY, INDUCTIONS, INCIDENT REPORT FORMS, PRAYER, ASKING FOR WISDOM, QUARTELY REVIEWS, MONTHLY PUBLIC REVIEWS, PUBLIC COMPANY PROFILE.

PERCEPTION

ITS ALL DONE BY AND IS ABOUT ONE PERSON?

REALITY

WILDFIRE HAS OVER 25 VOLUNTEERS, 10 TRUSTEES, 3 DIRECTORS, HOPE2FAMILIES HAS OVER 10 VOLUNTEERS. EVENTS REQUIRE AND HAVE BEEN DONE WITH A TEAM OF AT LEAST 12-15 PEOPLE. ONLINE CONTACT HAS INCLUDED 100S OF PEOPLE.

WILDFIRE SEEKS TO IGNITE MEN AND WOMEN OF GOD INTO A DEEPER DISCIPLESHIP WITH CHRIST. DISCIPLESHIP MEANING ENCOUNTER WITH JESUS, BAPTISM AND LOCAL BODY PLUG IN. WILDFIRE ACTS AS THE DISCIPLESHIP BRANCH OF HOPE2FAMILIES.

5

PERCEPTION

SOCIAL MEDIA IS ROGUE AND RANDOM?

REALITY

ONLINE CONTENT INCLUDES PODCASTS, BLOGS, MINI SERIES, EVENT PROMO, EVENT RECAP, SONGS COME FROM WITHIN THE TEAM. POSTS ARE PRESENTED TO THE DIRECTORS, TRUSTEES AND TEAM BEFORE UPLOADING AND HAVE BEEN TALKED ABOUT AT TEAM MEETINGS,

PERCEPTION

EVENTS ARE ROGUE AND RANDOM?

REALITY

TEAM PLANNING PROCEEDS EVENTS, EVENTS ARE COMMUNICATED TO DIRECTORS, TRUSTEES AND THE TEAM. TEAM PLANNING IS ONCE A MONTH.

WILDFIRE SEEKS TO IGNITE MEN AND WOMEN OF GOD INTO A DEEPER DISCIPLESHIP WITH CHRIST. DISCIPLESHIP MEANING ENCOUNTER WITH JESUS, BAPTISM AND LOCAL BODY PLUG IN. WILDFIRE ACTS AS THE DISCIPLESHIP BRANCH OF HOPE2FAMILIES.

6

US

EVERYTHING THAT EXISTS HAS PROBLEMS, WILDFIRE EXISTS AND SO HAS PROBLEMS.

WITH OUR ACCOUNTABILITY WE RECOGNISE OUR PROBLEMS AND COME UP WITH SOLUTIONS.

WE TRULY LOVE JESUS WITH OUR WHOLE HEART AND DESIRE TO SERVE HIM. THE EVIDENCE IS FOUND WITH THE HUNDREDS OF CHURCHES, CHARITIES AND PARACHURCH ORGANISATIONS. WE HAVE HEARD 10,000S OF STORIES OF PEOPLE WHO COME TO KNOW JESUS, HAVE GROWN CLOSER TO JESUS, HAVE BEEN PRACTICALLY HELPED, WE CONTINUE TO SERVE CHRIST AS HE CALLS US.

WE ARE CONSTANTLY PRAYNG, WE ARE CONSTANTLY PRAISING, WE WANT UNITY, TRUTH AND LOVE TO PREVAIL.

WE WANT TO CREATE SPACES FOR PEOPLE TO COME TO KNOW JESUS, TO BE BAPTISED AND THEN TO BE PLUGGED INTO A LOCAL BODY. WE WANT AND HAVE TO DO THIS WITH LOCAL BODIES, ELDERS, DEACONS, OTHER CHARITIES.

WE THINK BIBLICALLY ABOUT EVERYTHING.

WILDFIRE SEEKS TO IGNITE MEN AND WOMEN OF GOD INTO A DEEPER DISCIPLESHIP WITH CHRIST. DISCIPLESHIP MEANING ENCOUNTER WITH JESUS, BAPTISM AND LOCAL BODY PLUG IN. WILDFIRE ACTS AS THE DISCIPLESHIP BRANCH OF HOPE2FAMILIES.

7

YOU

SEE FOR YOURSELF, COME TO OUR EVENTS, SPEAK TO THE TRUSTEES, THE DIRECTORS AND THE FOUNDERS IN PERSON.

KNOW CHARACTER, KNOW MOTIVES, KNOW ACTIONS AND THEIR EFFECTS BEFORE ESTABLISHING A PERCEPTION

DON'T SETTLE FOR PERCEPTION BUT GO WITH REALITY.

ASSUME THE BEST, PRESERVE, PROTECT, HOPE AND REJOICE, IN THIS WAY WE LOVE ONE ANOTHER.

EXTEND GRACE, PATIENCE, MERCY.

PRESERVE UNITY, SEEK TRUTH AND DO ALL THIS IN LOVE.

REMEMBER FAMILY AND THAT JESUS CALLS US TO LOVE ONE ANOTHER AS HE LOVE US.

DISENGAGE FROM WILDFIRE IF YOU FEEL LIKE IT DEFILES YOUR CONSCIENCE, IS UNEDIFYING FOR CHRIST AND DOESN'T HELP YOU.

WILDFIRE SEEKS TO IGNITE MEN AND WOMEN OF GOD INTO A DEEPER DISCIPLESHIP WITH CHRIST. DISCIPLESHIP MEANING ENCOUNTER WITH JESUS, BAPTISM AND LOCAL BODY PLUG IN. WILDFIRE ACTS AS THE DISCIPLESHIP BRANCH OF HOPE2FAMILIES.

8

DO WE WANT GODS KINGDOM ADVANCED, OR DO WE WANT GODS KINGDOM ADVANCED IN US?

A WIN IN THE KINGDOM IS A WIN FOR THE BODY.

WE HAVE TO LEARN TO ACKNOWLEDGE AND CELEBRATE WHAT IS A WORK OF CHRIST.

IF YOU HAVE A PROBLEM RING US, IF YOU DON'T HAVE OUR NUMBER YOU DON'T KNOW US WELL ENOUGH TO HAVE A PROBLEM.

WITH EVERY PROBLEM YOU SEE, SEE TWO MORE SOLUTIONS.

FOUNDED IN 2019, HOPE2FAMILIES IS A REGISTERED CHARITY THAT SEEKS TO PROVIDE PRACTICAL SUPPORT FOR THOSE WITH CANCER AND IN WIDER SUFFERING. OUR CHARITY CONTAINS WILDFIRE, WHICH ACTS AS THE YOUTH BRANCH OF THIS CHARITY.

ONLINE CONTENT

HOPE2FAMILIES ONLINE CONTENT

1

EVENT PROMO

THIS INCLUDES EVENT TRAILERS AND PROMOTIONAL MATERIAL FOR THE EVENTS DECIDED BY THE TEAM.

THIS INCLUDES HIGHLIGHTS FROM THE EVENTS THAT WE PUT ON.

THIS WILL INCLUDE SOCIAL MEDIA, AND WEBSITES.

3 BIG EVENTS EACH YEAR

**CHRISTMAS - HOPE2FAMILIES DINNER
EASTER - CONFERENCE
SUMMER - TENT MISSION**

FOUNDED IN 2019, HOPE2FAMILIES IS A REGISTERED CHARITY THAT SEEKS TO PROVIDE PRACTICAL SUPPORT FOR THOSE WITH CANCER AND IN WIDER SUFFERING. OUR CHARITY CONTAINS WILDFIRE, WHICH ACTS AS THE YOUTH BRANCH OF THIS CHARITY.

HOPE2FAMILIES ONLINE CONTENT

2

JOURNEY IN HOPE INTERVIEWS

PODCASTS ARE RELEASED EVERY FRIDAY.

INTERVIEWS WITH PEOPLE WHO HAVE OVERCOME DIFFICULTY AND ADVERSITY. THEIR STORY AND JOURNEY IN HOPE.

FOUNDED IN 2019, HOPE2FAMILIES IS A REGISTERED CHARITY THAT SEEKS TO PROVIDE PRACTICAL SUPPORT FOR THOSE WITH CANCER AND IN WIDER SUFFERING. OUR CHARITY CONTAINS WILDFIRE, WHICH ACTS AS THE YOUTH BRANCH OF THIS CHARITY.

HOPE2FAMILIES ONLINE CONTENT

3

MINI SERIES BIBLICAL FAMILIES

THIS SERIES LOOKS AT FAMILIES IN THE BIBLE AND THE MORALISTIC LESSONS WE CAN LEARN FROM THEM.

PURPOSE

HELP EDUCATE, TEACH, REBUKE, CORRECT AND TRAIN FAMILIES.

ACCOUNTABILITY

LIKE ALL OUR CONTENT, THE VARIOUS CIRCLES OF ACCOUNTABILITY WILL BE INFORMED AND THIR PRIOR TO POSTING THE VARIOUS ACCOUTABILITY WILL SEE WHAT THE POST AND DESCRIPTION WILL BE.

FOUNDED IN 2019, HOPE2FAMILIES IS A REGISTERED CHARITY THAT SEEKS TO PROVIDE PRACTICAL SUPPORT FOR THOSE WITH CANCER AND IN WIDER SUFFERING. OUR CHARITY CONTAINS WILDFIRE, WHICH ACTS AS THE YOUTH BRANCH OF THIS CHARITY.

HOPE2FAMILIES ONLINE CONTENT

4

MINI SERIES HOPE STREET

**WE TAKE TO THE STREET CONNECTED
TO THE HOPE2FAMILIES CENTRE
TELLING PEOPLE, SHOWING PEOPLE
AND GIVING PEOPLE HOPE.**

PURPOSE

**TO SHOW THAT FOLLOWERS OF CHRIST
CARE AND ACTUALLY HAVE A HOPE
THAT PEOPLE DON'T.**

ACCOUNTABILITY

**LIKE ALL OUR CONTENT, THE VARIOUS
CIRCLES OF ACCOUNTABILITY WILL BE
INFORMED AND IHR PRIOR TO POSTING
THE VARIOUS ACCOUTABILITY WILL SEE
WHAT THE POST AND DESCRIPTION
WILL BE.**

FOUNDED IN 2019, HOPE2FAMILIES IS A REGISTERED CHARITY THAT SEEKS TO PROVIDE PRACTICAL SUPPORT FOR THOSE WITH CANCER AND IN WIDER SUFFERING. OUR CHARITY CONTAINS WILDFIRE, WHICH ACTS AS THE YOUTH BRANCH OF THIS CHARITY.

HOPE2FAMILIES ONLINE CONTENT

5

MINI SERIES HOPE IN JESUS

THIS SERIES SEES US EXPLORE OUR HOPELESSNESS AND THE HOPE FOUND IN JESUS CHRIST.

PURPOSE

TO HIGHLIGHT THE INCREDIBLE HOPE THAT WE POSSESS AND EXHORTING US TO A LIFE THAT REFLECTS THAT HOPE.

ACCOUNTABILITY

LIKE ALL OUR CONTENT, THE VARIOUS CIRCLES OF ACCOUNTABILITY WILL BE INFORMED AND THIR PRIOR TO POSTING THE VARIOUS ACCOUTABILITY WILL SEE WHAT THE POST AND DESCRIPTION WILL BE.

FOUNDED IN 2019, HOPE2FAMILIES IS A REGISTERED CHARITY THAT SEEKS TO PROVIDE PRACTICAL SUPPORT FOR THOSE WITH CANCER AND IN WIDER SUFFERING. OUR CHARITY CONTAINS WILDFIRE, WHICH ACTS AS THE YOUTH BRANCH OF THIS CHARITY.

HOPE2FAMILIES ONLINE CONTENT

6

MINI SERIES HOPE RETREAT

**A TIME OF RETREAT FOR PEOPLE TO
ALIGN THEMSELVES WITH THE HOPE
THEY HAVE.**

PURPOSE

**TO SHOW HOPE INDIVIDUALLY, HOPE IN
COMMUNITY, HOPE IN THE NOW AND
NOT YET BECAUSE OF JESUS.**

ACCOUNTABILITY

**LIKE ALL OUR CONTENT, THE VARIOUS
CIRCLES OF ACCOUNTABILITY WILL BE
INFORMED AND 1HR PRIOR TO POSTING
THE VARIOUS ACCOUTABILITY WILL SEE
WHAT THE POST AND DESCRIPTION
WILL BE.**

FOUNDED IN 2019, HOPE2FAMILIES IS A REGISTERED CHARITY THAT SEEKS TO PROVIDE PRACTICAL SUPPORT FOR THOSE WITH CANCER AND IN WIDER SUFFERING. OUR CHARITY CONTAINS WILDFIRE, WHICH ACTS AS THE YOUTH BRANCH OF THIS CHARITY.

HOPE2FAMILIES ONLINE CONTENT

7

MINI SERIES HOPE 2 WHAT?

**POSTS, VIDEOS AND Q/AS EXPLAINING
THE CHARITY.**

PURPOSE

**PROVIDE CLARITY AND TACKLE THE
MISPERCEPTIONS THAT MAY EXIST.**

ACCOUNTABILITY

**LIKE ALL OUR CONTENT, THE VARIOUS
CIRCLES OF ACCOUNTABILITY WILL BE
INFORMED AND IHR PRIOR TO POSTING
THE VARIOUS ACCOUTABILITY WILL SEE
WHAT THE POST AND DESCRIPTION
WILL BE.**

WILDFIRE SEEKS TO IGNITE MEN AND WOMEN OF GOD INTO A DEEPER DISCIPLESHIP WITH CHRIST. DISCIPLESHIP MEANING ENCOUNTER WITH JESUS, BAPTISM AND LOCAL BODY PLUG IN. WILDFIRE ACTS AS THE DISCIPLESHIP BRANCH OF HOPE2FAMILIES.

ONLINE CONTENT

WILDFIRE ONLINE CONTENT

1

EVENT PROMO

THIS INCLUDES EVENT TRAILERS AND PROMOTIONAL MATERIAL FOR THE EVENTS DECIDED BY THE TEAM.

THIS INCLUDES HIGHLIGHTS FROM THE EVENTS THAT WE PUT ON.

THIS WILL INCLUDE SOCIAL MEDIA, AND WEBSITES.

BLOGS

BLOGS ARE RELEASED ON MONDAYS VIA THE WEBSITE AND SOCIAL MEDIA.

THE MAJORITY OF BLOGS ARE DONE BY THE TEAM, BUT SOME BLOGS WILL BE WRITTEN BY OTHER FOLLOWERS OF CHRIST.

THESE BLOGS WILL BE VETTED BY A DIRECTOR, TRUSTEE, TEAM MEMBER.

WILDFIRE SEEKS TO IGNITE MEN AND WOMEN OF GOD INTO A DEEPER DISCIPLESHIP WITH CHRIST. DISCIPLESHIP MEANING ENCOUNTER WITH JESUS, BAPTISM AND LOCAL BODY PLUG IN. WILDFIRE ACTS AS THE DISCIPLESHIP BRANCH OF HOPE2FAMILIES.

WILDFIRE ONLINE CONTENT

2

PODCASTS

PODCASTS ARE RELEASED EVERY FRIDAY.

PODCASTS ARE MADE UP OF GUESTS, INDIVIDUAL PODCASTS AND PODCASTS DONE BY THE TEAM.

WE ALTERNATE BETWEEN BIBLE TOPICS AND BIBLE BOOKS.

PROVISIONAL PODCASTS, DATES AND GUESTS ARE LAID OUT TO THE VARIOUS CIRCLES OF ACCOUNTABILITY.

WILDFIRE SEEKS TO IGNITE MEN AND WOMEN OF GOD INTO A DEEPER DISCIPLESHIP WITH CHRIST. DISCIPLESHIP MEANING ENCOUNTER WITH JESUS, BAPTISM AND LOCAL BODY PLUG IN. WILDFIRE ACTS AS THE DISCIPLESHIP BRANCH OF HOPE2FAMILIES.

WILDFIRE ONLINE CONTENT

3

PRAISE

SONGS ARE RELEASED EVERY SUNDAY.

SONGS ARE WRITTEN AND COVERED BY THE TEAM, WITH THE POSSIBILITY OF COLLABING WITH OTHER SINGERS.

ALL SONGS ARE AVAILBLE ON NEARLY ALL STREAMING PLATFORMS LIKE THE PODCASTS.

PRAISE IS DONE IN SEASONS, EACH SEASON IS COMPRISED OF A COLLECTION OF DIFFERENT SONGS.

WILDFIRE SEEKS TO IGNITE MEN AND WOMEN OF GOD INTO A DEEPER DISCIPLESHIP WITH CHRIST. DISCIPLESHIP MEANING ENCOUNTER WITH JESUS, BAPTISM AND LOCAL BODY PLUG IN. WILDFIRE ACTS AS THE DISCIPLESHIP BRANCH OF HOPE2FAMILIES.

WILDFIRE ONLINE CONTENT

4

MINI SERIES DEFINED

**THIS SERIES TAKES BIBLICAL WORDS,
DOCTRINES AND CONCEPTS,
EXPLAINING WHAT THEY MEAN.**

PURPOSE

**TO HELP EDUCATE PEOPLE ON WHAT IS
FOUND IN GODS WORD IN AN ENGAGING
WAY.**

ACCOUNTABILITY

**LIKE ALL OUR CONTENT, THE VARIOUS
CIRCLES OF ACCOUNTABILITY WILL BE
INFORMED AND 1HR PRIOR TO POSTING
THE VARIOUS ACCOUTABILITY WILL SEE
WHAT THE POST AND DESCRIPTION
WILL BE.**

WILDFIRE SEEKS TO IGNITE MEN AND WOMEN OF GOD INTO A DEEPER DISCIPLESHIP WITH CHRIST. DISCIPLESHIP MEANING ENCOUNTER WITH JESUS, BAPTISM AND LOCAL BODY PLUG IN. WILDFIRE ACTS AS THE DISCIPLESHIP BRANCH OF HOPE2FAMILIES.

WILDFIRE ONLINE CONTENT

5

MINI SERIES CANDID CONVERSATIONS

THIS SERIES SEES US HAVE CONVERSATIONS ABOUT UNSPOKEN TOPICS WITH FOLLOWERS OF CHRIST.

PURPOSE

TO NORMALISE CONVERSATIONS PEOPLE FEEL THEY CAN'T HAVE,

ACCOUNTABILITY

LIKE ALL OUR CONTENT, THE VARIOUS CIRCLES OF ACCOUNTABILITY WILL BE INFORMED AND 1HR PRIOR TO POSTING THE VARIOUS ACCOUTABILITY WILL SEE WHAT THE POST AND DESCRIPTION WILL BE.

WILDFIRE SEEKS TO IGNITE MEN AND WOMEN OF GOD INTO A DEEPER DISCIPLESHIP WITH CHRIST. DISCIPLESHIP MEANING ENCOUNTER WITH JESUS, BAPTISM AND LOCAL BODY PLUG IN. WILDFIRE ACTS AS THE DISCIPLESHIP BRANCH OF HOPE2FAMILIES.

WILDFIRE ONLINE CONTENT

6

MINI SERIES CONTEND

THIS SERIES SEES US NOT ONLY DEFEND THE FAITH THROUGH OUR APOLOGETIC, BUT BE ON THE OFFENSIVE WITH THE HOPE WE POSSESS.

PURPOSE

TO EQUIP FOLLOWERS OF CHRIST TO ENGAGE IN THE CONTEXT THEY FIND THEMSELVES WITH.

ACCOUNTABILITY

LIKE ALL OUR CONTENT, THE VARIOUS CIRCLES OF ACCOUNTABILITY WILL BE INFORMED AND IHR PRIOR TO POSTING THE VARIOUS ACCOUTABILITY WILL SEE WHAT THE POST AND DESCRIPTION WILL BE.

WILDFIRE SEEKS TO IGNITE MEN AND WOMEN OF GOD INTO A DEEPER DISCIPLESHIP WITH CHRIST. DISCIPLESHIP MEANING ENCOUNTER WITH JESUS, BAPTISM AND LOCAL BODY PLUG IN. WILDFIRE ACTS AS THE DISCIPLESHIP BRANCH OF HOPE2FAMILIES.

WILDFIRE ONLINE CONTENT

7

MINI SERIES SPEAKING TRUTH

THIS SERIES SEES US PRESENT STATEMENTS THAT ARE THERE TO BE THOUGHT-PROVOKING AND BRING PEOPLE TO GOD FOR WISDOM.

PURPOSE

PRESENT PEOPLE WITH WISDOM THAT REQUIRES DISCERNMENT.

ACCOUNTABILITY

LIKE ALL OUR CONTENT, THE VARIOUS CIRCLES OF ACCOUNTABILITY WILL BE INFORMED AND 1HR PRIOR TO POSTING THE VARIOUS ACCOUTABILITY WILL SEE WHAT THE POST AND DESCRIPTION WILL BE.

WILDFIRE SEEKS TO IGNITE MEN AND WOMEN OF GOD INTO A DEEPER DISCIPLESHIP WITH CHRIST. DISCIPLESHIP MEANING ENCOUNTER WITH JESUS, BAPTISM AND LOCAL BODY PLUG IN. WILDFIRE ACTS AS THE DISCIPLESHIP BRANCH OF HOPE2FAMILIES.

WILDFIRE ONLINE CONTENT

8

MINI SERIES VOCATIONAL VACATION

THIS SERIES SEES US TAKE SERIOUSLY THE COMMAND TO WORK AND REST BY ORGANISING HOLIDAYS THAT ARE INTENTIONAL IN BEING MISSIONAL.

PURPOSE

HELP PEOPLE SEE AND THEN BE INTENTIONAL IN HOW THEY REST AND DO MISSION ALWAYS, SPECIFICALLY ON HOLIDAYS AND MISSION TRIPS.

ACCOUNTABILITY

LIKE ALL OUR CONTENT, THE VARIOUS CIRCLES OF ACCOUNTABILITY WILL BE INFORMED AND THIR PRIOR TO POSTING THE VARIOUS ACCOUTABILITY WILL SEE WHAT THE POST AND DESCRIPTION WILL BE.

WILDFIRE SEEKS TO IGNITE MEN AND WOMEN OF GOD INTO A DEEPER DISCIPLESHIP WITH CHRIST. DISCIPLESHIP MEANING ENCOUNTER WITH JESUS, BAPTISM AND LOCAL BODY PLUG IN. WILDFIRE ACTS AS THE DISCIPLESHIP BRANCH OF HOPE2FAMILIES.

WILDFIRE ONLINE CONTENT

9

MINI SERIES WHAT THE WILDFIRE

**POSTS, VIDEOS AND Q/AS EXPLAINING
THE CHARITY.**

PURPOSE

**PROVIDE CLARITY AND TACKLE THE
MISPERCEPTIONS THAT MAY EXIST.**

ACCOUNTABILITY

**LIKE ALL OUR CONTENT, THE VARIOUS
CIRCLES OF ACCOUNTABILITY WILL BE
INFORMED AND IHR PRIOR TO POSTING
THE VARIOUS ACCOUTABILITY WILL SEE
WHAT THE POST AND DESCRIPTION
WILL BE.**

WILDFIRE SEEKS TO IGNITE MEN AND WOMEN OF GOD INTO A DEEPER DISCIPLESHIP WITH CHRIST. DISCIPLESHIP MEANING ENCOUNTER WITH JESUS, BAPTISM AND LOCAL BODY PLUG IN. WILDFIRE ACTS AS THE DISCIPLESHIP BRANCH OF HOPE2FAMILIES.

WILDFIRE ONLINE CONTENT

10

MINI SERIES WILDFIRE SKETCHES

**PROVIDING QUALITY, FUNNY AND
CHRISTIAN CONTENT.**

PURPOSE

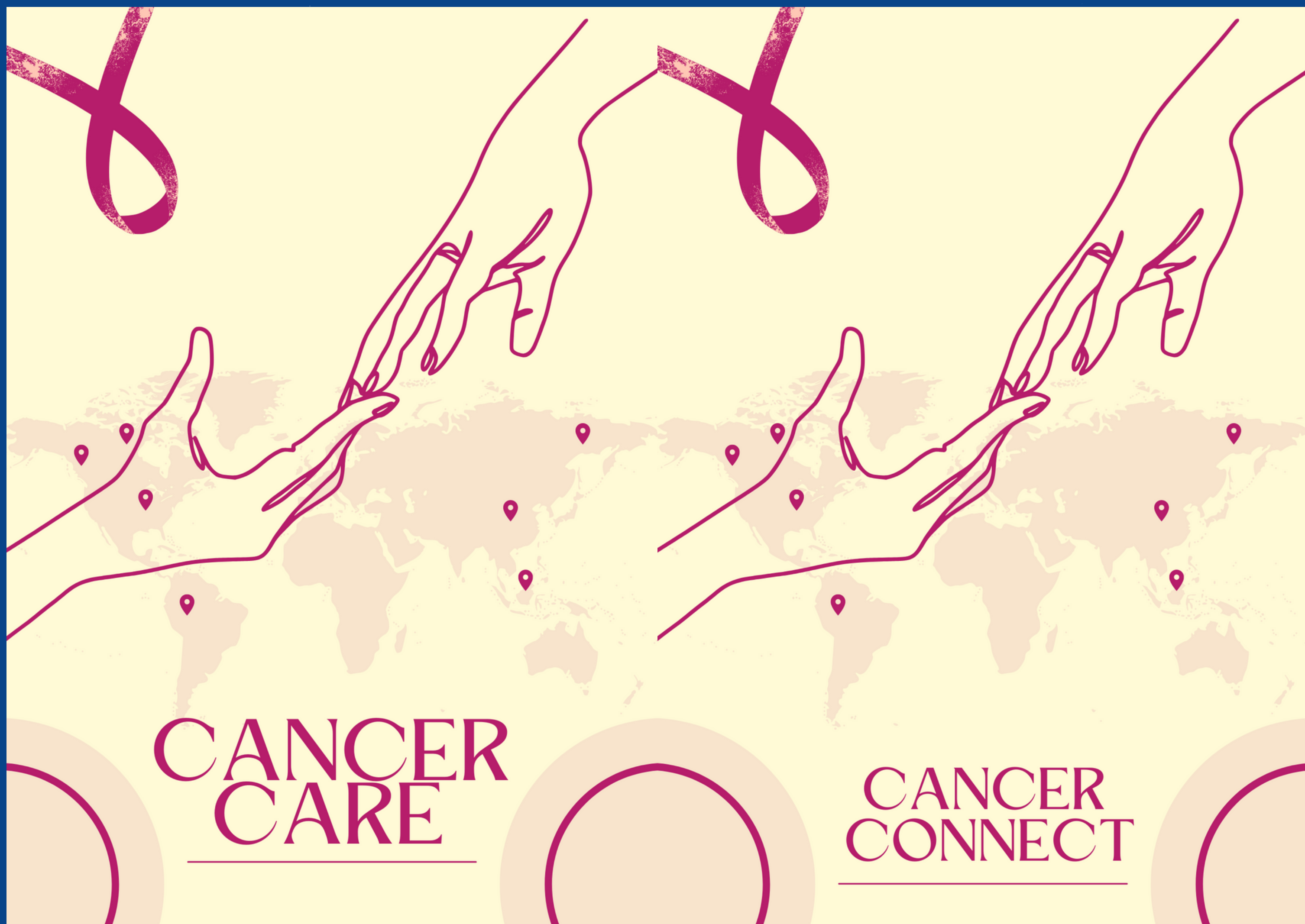
**TO PROVIDE AN ALTERNATIVE SOURCE
OF ENTERTAINMENT THAT IS GOOD,
JUST AND PURE.**

ACCOUNTABILITY

**LIKE ALL OUR CONTENT, THE VARIOUS
CIRCLES OF ACCOUNTABILITY WILL BE
INFORMED AND THR PRIOR TO POSTING
THE VARIOUS ACCOUTABILITY WILL SEE
WHAT THE POST AND DESCRIPTION
WILL BE.**

FOUNDED IN 2019, HOPE2FAMILIES IS A REGISTERED CHARITY THAT SEEKS TO PROVIDE PRACTICAL SUPPORT FOR THOSE WITH CANCER AND IN WIDER SUFFERING. OUR CHARITY CONTAINS WILDFIRE, WHICH ACTS AS THE YOUTH BRANCH OF THIS CHARITY.

CHARITY PROGRAMS



FOUNDED IN 2019, HOPE2FAMILIES IS A REGISTERED CHARITY THAT SEEKS TO PROVIDE PRACTICAL SUPPORT FOR THOSE WITH CANCER AND IN WIDER SUFFERING. OUR CHARITY CONTAINS WILDFIRE, WHICH ACTS AS THE YOUTH BRANCH OF THIS CHARITY.

CHARITY PROGRAMS



ELDER CARE

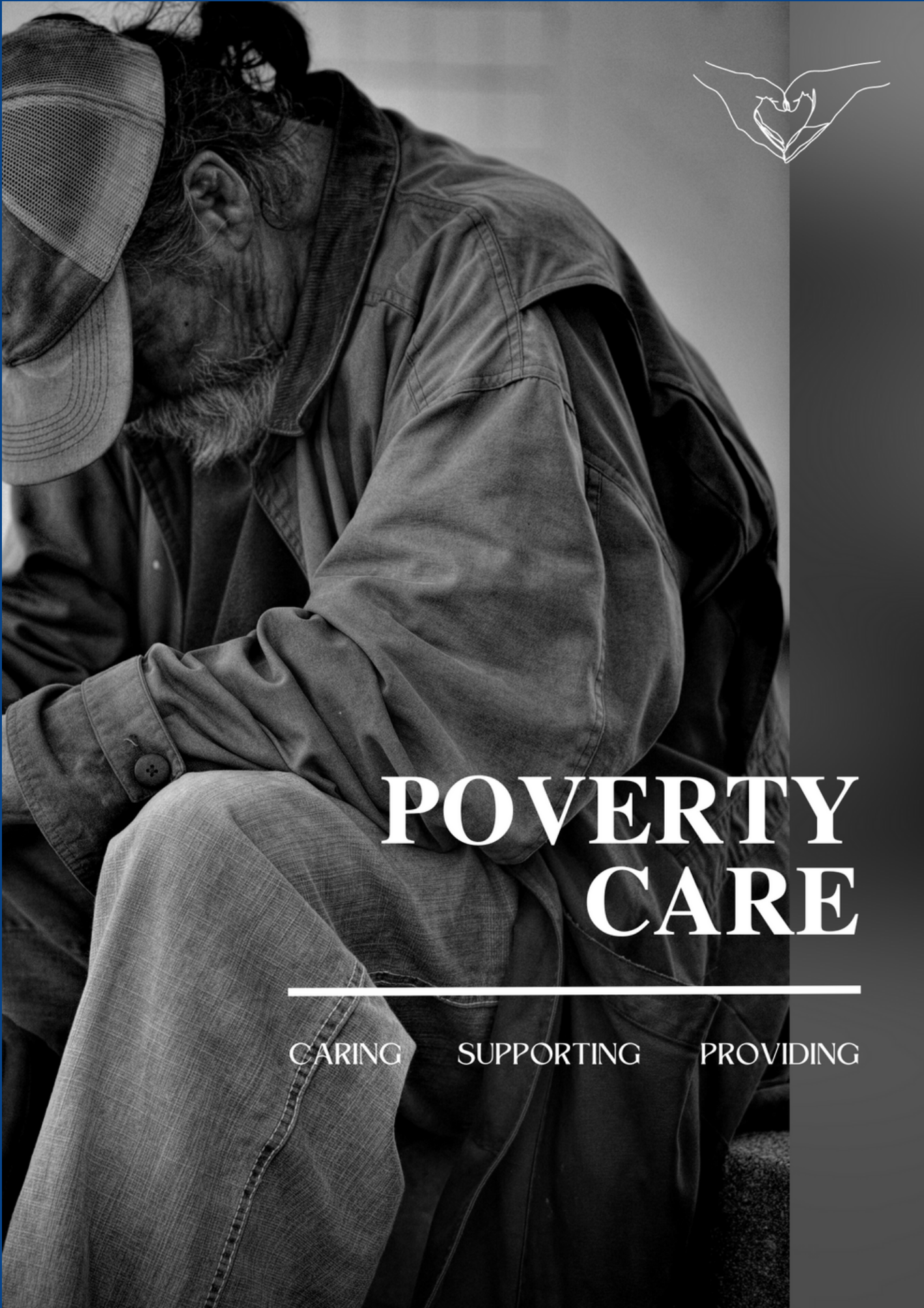
FROM YOU CARING TO THEM CARING

CRAFTS &
CHATTER

NEVER TOO OLD TO HAVE SOME FUN

FOUNDED IN 2019, HOPE2FAMILIES IS A REGISTERED CHARITY THAT SEEKS TO PROVIDE PRACTICAL SUPPORT FOR THOSE WITH CANCER AND IN WIDER SUFFERING. OUR CHARITY CONTAINS WILDFIRE, WHICH ACTS AS THE YOUTH BRANCH OF THIS CHARITY.

CHARITY PROGRAMS



POVERTY CARE

CARING SUPPORTING PROVIDING



PITCH TO PEOPLE

FROM YOUR PITCH TO YOUR PEOPLE

WILDFIRE SEEKS TO IGNITE MEN AND WOMEN OF GOD INTO A DEEPER DISCIPLESHIP WITH CHRIST. DISCIPLESHIP MEANING ENCOUNTER WITH JESUS, BAPTISM AND LOCAL BODY PLUG IN. WILDFIRE ACTS AS THE DISCIPLESHIP BRANCH OF HOPE2FAMILIES.

DISCIPLESHIP PROGRAMS



WILDFIRE SEEKS TO IGNITE MEN AND WOMEN OF GOD INTO A DEEPER DISCIPLESHIP WITH CHRIST. DISCIPLESHIP MEANING ENCOUNTER WITH JESUS, BAPTISM AND LOCAL BODY PLUG IN. WILDFIRE ACTS AS THE DISCIPLESHIP BRANCH OF HOPE2FAMILIES.

DISCIPLESHIP PROGRAMS



WILDFIRE SEEKS TO IGNITE MEN AND WOMEN OF GOD INTO A DEEPER DISCIPLESHIP WITH CHRIST. DISCIPLESHIP MEANING ENCOUNTER WITH JESUS, BAPTISM AND LOCAL BODY PLUG IN. WILDFIRE ACTS AS THE DISCIPLESHIP BRANCH OF HOPE2FAMILIES.

DISCIPLESHIP PROGRAMS



FOUNDED IN 2019, HOPE2FAMILIES IS A REGISTERED CHARITY THAT SEEKS TO PROVIDE PRACTICAL SUPPORT FOR THOSE WITH CANCER AND IN WIDER SUFFERING. OUR CHARITY CONTAINS WILDFIRE, WHICH ACTS AS THE YOUTH BRANCH OF THIS CHARITY.

EVENTS

CHRISTMAS DINNER



FOUNDED IN 2019, HOPE2FAMILIES IS A REGISTERED CHARITY THAT SEEKS TO PROVIDE PRACTICAL SUPPORT FOR THOSE WITH CANCER AND IN WIDER SUFFERING. OUR CHARITY CONTAINS WILDFIRE, WHICH ACTS AS THE YOUTH BRANCH OF THIS CHARITY.

EVENTS

EASTER EVENT



FOUNDED IN 2019, HOPE2FAMILIES IS A REGISTERED CHARITY THAT SEEKS TO PROVIDE PRACTICAL SUPPORT FOR THOSE WITH CANCER AND IN WIDER SUFFERING. OUR CHARITY CONTAINS WILDFIRE, WHICH ACTS AS THE YOUTH BRANCH OF THIS CHARITY.

EVENTS

SUMMER TENT MISSION



FOUNDED IN 2019, HOPE2FAMILIES IS A REGISTERED CHARITY THAT SEEKS TO PROVIDE PRACTICAL SUPPORT FOR THOSE WITH CANCER AND IN WIDER SUFFERING. OUR CHARITY CONTAINS WILDFIRE, WHICH ACTS AS THE YOUTH BRANCH OF THIS CHARITY.

EVENTS

WEDNESDAY NIGHT BIBLE STUDY



WILDFIRE SEEKS TO IGNITE MEN AND WOMEN OF GOD INTO A DEEPER DISCIPLESHIP WITH CHRIST. DISCIPLESHIP MEANING ENCOUNTER WITH JESUS, BAPTISM AND LOCAL BODY PLUG IN. WILDFIRE ACTS AS THE DISCIPLESHIP BRANCH OF HOPE2FAMILIES.

EVENTS

WILDFIRE NIGHTS | 17-24 YEAR OLDS | MONTHLY



WILDFIRE SEEKS TO IGNITE MEN AND WOMEN OF GOD INTO A DEEPER DISCIPLESHIP WITH CHRIST. DISCIPLESHIP MEANING ENCOUNTER WITH JESUS, BAPTISM AND LOCAL BODY PLUG IN. WILDFIRE ACTS AS THE DISCIPLESHIP BRANCH OF HOPE2FAMILIES.

EVENTS

HOUSE OF PRAYER | EVERY MONDAY



WILDFIRE SEEKS TO IGNITE MEN AND WOMEN OF GOD INTO A DEEPER DISCIPLESHIP WITH CHRIST. DISCIPLESHIP MEANING ENCOUNTER WITH JESUS, BAPTISM AND LOCAL BODY PLUG IN. WILDFIRE ACTS AS THE DISCIPLESHIP BRANCH OF HOPE2FAMILIES.

EVENTS

WILDFIRE CHILL | SUMMER EVENTS



WILDFIRE SEEKS TO IGNITE MEN AND WOMEN OF GOD INTO A DEEPER DISCIPLESHIP WITH CHRIST. DISCIPLESHIP MEANING ENCOUNTER WITH JESUS, BAPTISM AND LOCAL BODY PLUG IN. WILDFIRE ACTS AS THE DISCIPLESHIP BRANCH OF HOPE2FAMILIES.

WILDFIRE HOTSPOTS | EVERY WEDNESDAY



FOUNDED IN 2019, HOPE2FAMILIES IS A REGISTERED CHARITY THAT SEEKS TO PROVIDE PRACTICAL SUPPORT FOR THOSE WITH CANCER AND IN WIDER SUFFERING. OUR CHARITY CONTAINS WILDFIRE, WHICH ACTS AS THE YOUTH BRANCH OF THIS CHARITY.

TEAMS | HANDS OF HOPE



WILDFIRE SEEKS TO IGNITE MEN AND WOMEN OF GOD INTO A DEEPER DISCIPLESHIP WITH CHRIST. DISCIPLESHIP MEANING ENCOUNTER WITH JESUS, BAPTISM AND LOCAL BODY PLUG IN. WILDFIRE ACTS AS THE DISCIPLESHIP BRANCH OF HOPE2FAMILIES.

TEAMS | VOCATIONAL VACATION



FOUNDED IN 2019, HOPE2FAMILIES IS A REGISTERED CHARITY THAT SEEKS TO PROVIDE PRACTICAL SUPPORT FOR THOSE WITH CANCER AND IN WIDER SUFFERING. OUR CHARITY CONTAINS WILDFIRE, WHICH ACTS AS THE YOUTH BRANCH OF THIS CHARITY.



MEETINGS

MONTHLY TEAM MEETINGS | LAST FRIDAY OF EVERY MONTH

WEDNESDAY NIGHT MEETINGS | EVERY WEDNESDAY

TRUSTEE MEETINGS | QUARTERLY

) JANUARY

) APRIL

) AUGUST

WILDFIRE SEEKS TO IGNITE MEN AND WOMEN OF GOD INTO A DEEPER DISCIPLESHIP WITH CHRIST. DISCIPLESHIP MEANING ENCOUNTER WITH JESUS, BAPTISM AND LOCAL BODY PLUG IN. WILDFIRE ACTS AS THE DISCIPLESHIP BRANCH OF HOPE2FAMILIES.

MEETINGS

MONTHLY TEAM MEETINGS | EVERY SECOND SATURDAY OF THE MONTH

MONTHLY EVENTS | EVERY FIRST SATURDAY OF THE MONTH

TRUSTEE MEETINGS | QUARTERLY

) JANUARY

) APRIL

) AUGUST

FOUNDED IN 2019, HOPE2FAMILIES IS A REGISTERED CHARITY THAT SEEKS TO PROVIDE PRACTICAL SUPPORT FOR THOSE WITH CANCER AND IN WIDER SUFFERING. OUR CHARITY CONTAINS WILDFIRE, WHICH ACTS AS THE YOUTH BRANCH OF THIS CHARITY.

**DIRECTORS
HEATHER TAYLOR**



FOUNDED IN 2019, HOPE2FAMILIES IS A REGISTERED CHARITY THAT SEEKS TO PROVIDE PRACTICAL SUPPORT FOR THOSE WITH CANCER AND IN WIDER SUFFERING. OUR CHARITY CONTAINS WILDFIRE, WHICH ACTS AS THE YOUTH BRANCH OF THIS CHARITY.

**DIRECTORS
DILLON TAYLOR**



FOUNDED IN 2019, HOPE2FAMILIES IS A REGISTERED CHARITY THAT SEEKS TO PROVIDE PRACTICAL SUPPORT FOR THOSE WITH CANCER AND IN WIDER SUFFERING. OUR CHARITY CONTAINS WILDFIRE, WHICH ACTS AS THE YOUTH BRANCH OF THIS CHARITY.

**DIRECTORS
LUKE TAYLOR**



FOUNDED IN 2019, HOPE2FAMILIES IS A REGISTERED CHARITY THAT SEEKS TO PROVIDE PRACTICAL SUPPORT FOR THOSE WITH CANCER AND IN WIDER SUFFERING. OUR CHARITY CONTAINS WILDFIRE, WHICH ACTS AS THE YOUTH BRANCH OF THIS CHARITY.

**TRUSTEES
SUSAN MAIRS**



FOUNDED IN 2019, HOPE2FAMILIES IS A REGISTERED CHARITY THAT SEEKS TO PROVIDE PRACTICAL SUPPORT FOR THOSE WITH CANCER AND IN WIDER SUFFERING. OUR CHARITY CONTAINS WILDFIRE, WHICH ACTS AS THE YOUTH BRANCH OF THIS CHARITY.

TRUSTEES

LIAM BLACK



FOUNDED IN 2019, HOPE2FAMILIES IS A REGISTERED CHARITY THAT SEEKS TO PROVIDE PRACTICAL SUPPORT FOR THOSE WITH CANCER AND IN WIDER SUFFERING. OUR CHARITY CONTAINS WILDFIRE, WHICH ACTS AS THE YOUTH BRANCH OF THIS CHARITY.

**TRUSTEES
ADELLE BLACK**



FOUNDED IN 2019, HOPE2FAMILIES IS A REGISTERED CHARITY THAT SEEKS TO PROVIDE PRACTICAL SUPPORT FOR THOSE WITH CANCER AND IN WIDER SUFFERING. OUR CHARITY CONTAINS WILDFIRE, WHICH ACTS AS THE YOUTH BRANCH OF THIS CHARITY.

**TRUSTEES
IRIS LONEY**



FOUNDED IN 2019, HOPE2FAMILIES IS A REGISTERED CHARITY THAT SEEKS TO PROVIDE PRACTICAL SUPPORT FOR THOSE WITH CANCER AND IN WIDER SUFFERING. OUR CHARITY CONTAINS WILDFIRE, WHICH ACTS AS THE YOUTH BRANCH OF THIS CHARITY.

**TRUSTEES
THELMA SPEIRS**



FOUNDED IN 2019, HOPE2FAMILIES IS A REGISTERED CHARITY THAT SEEKS TO PROVIDE PRACTICAL SUPPORT FOR THOSE WITH CANCER AND IN WIDER SUFFERING. OUR CHARITY CONTAINS WILDFIRE, WHICH ACTS AS THE YOUTH BRANCH OF THIS CHARITY.

**TRUSTEES
NIAMH WRIGHT**



FOUNDED IN 2019, HOPE2FAMILIES IS A REGISTERED CHARITY THAT SEEKS TO PROVIDE PRACTICAL SUPPORT FOR THOSE WITH CANCER AND IN WIDER SUFFERING. OUR CHARITY CONTAINS WILDFIRE, WHICH ACTS AS THE YOUTH BRANCH OF THIS CHARITY.

**TRUSTEES
PETER WRIGHT**



FOUNDED IN 2019, HOPE2FAMILIES IS A REGISTERED CHARITY THAT SEEKS TO PROVIDE PRACTICAL SUPPORT FOR THOSE WITH CANCER AND IN WIDER SUFFERING. OUR CHARITY CONTAINS WILDFIRE, WHICH ACTS AS THE YOUTH BRANCH OF THIS CHARITY.

**TRUSTEES
HEATHER TAYLOR**



FOUNDED IN 2019, HOPE2FAMILIES IS A REGISTERED CHARITY THAT SEEKS TO PROVIDE PRACTICAL SUPPORT FOR THOSE WITH CANCER AND IN WIDER SUFFERING. OUR CHARITY CONTAINS WILDFIRE, WHICH ACTS AS THE YOUTH BRANCH OF THIS CHARITY.

TRUSTEES
DILLON TAYLOR



FOUNDED IN 2019, HOPE2FAMILIES IS A REGISTERED CHARITY THAT SEEKS TO PROVIDE PRACTICAL SUPPORT FOR THOSE WITH CANCER AND IN WIDER SUFFERING. OUR CHARITY CONTAINS WILDFIRE, WHICH ACTS AS THE YOUTH BRANCH OF THIS CHARITY.

**TRUSTEES
LUKE TAYLOR**



FOUNDED IN 2019, HOPE2FAMILIES IS A REGISTERED CHARITY THAT SEEKS TO PROVIDE PRACTICAL SUPPORT FOR THOSE WITH CANCER AND IN WIDER SUFFERING. OUR CHARITY CONTAINS WILDFIRE, WHICH ACTS AS THE YOUTH BRANCH OF THIS CHARITY.

VOLUNTEERS

THELMA SPEIRS



FOUNDED IN 2019, HOPE2FAMILIES IS A REGISTERED CHARITY THAT SEEKS TO PROVIDE PRACTICAL SUPPORT FOR THOSE WITH CANCER AND IN WIDER SUFFERING. OUR CHARITY CONTAINS WILDFIRE, WHICH ACTS AS THE YOUTH BRANCH OF THIS CHARITY.

VOLUNTEERS

ALANA SPEIRS



FOUNDED IN 2019, HOPE2FAMILIES IS A REGISTERED CHARITY THAT SEEKS TO PROVIDE PRACTICAL SUPPORT FOR THOSE WITH CANCER AND IN WIDER SUFFERING. OUR CHARITY CONTAINS WILDFIRE, WHICH ACTS AS THE YOUTH BRANCH OF THIS CHARITY.

VOLUNTEERS

STEPHANIE LOUISE



FOUNDED IN 2019, HOPE2FAMILIES IS A REGISTERED CHARITY THAT SEEKS TO PROVIDE PRACTICAL SUPPORT FOR THOSE WITH CANCER AND IN WIDER SUFFERING. OUR CHARITY CONTAINS WILDFIRE, WHICH ACTS AS THE YOUTH BRANCH OF THIS CHARITY.

VOLUNTEERS

PHYLLIS COCHRANE



FOUNDED IN 2019, HOPE2FAMILIES IS A REGISTERED CHARITY THAT SEEKS TO PROVIDE PRACTICAL SUPPORT FOR THOSE WITH CANCER AND IN WIDER SUFFERING. OUR CHARITY CONTAINS WILDFIRE, WHICH ACTS AS THE YOUTH BRANCH OF THIS CHARITY.

VOLUNTEERS

JANETTE SOMMERS



FOUNDED IN 2019, HOPE2FAMILIES IS A REGISTERED CHARITY THAT SEEKS TO PROVIDE PRACTICAL SUPPORT FOR THOSE WITH CANCER AND IN WIDER SUFFERING. OUR CHARITY CONTAINS WILDFIRE, WHICH ACTS AS THE YOUTH BRANCH OF THIS CHARITY.

VOLUNTEERS

MARC TAYLOR



FOUNDED IN 2019, HOPE2FAMILIES IS A REGISTERED CHARITY THAT SEEKS TO PROVIDE PRACTICAL SUPPORT FOR THOSE WITH CANCER AND IN WIDER SUFFERING. OUR CHARITY CONTAINS WILDFIRE, WHICH ACTS AS THE YOUTH BRANCH OF THIS CHARITY.

**VOLUNTEERS
HEATHER TAYLOR**



FOUNDED IN 2019, HOPE2FAMILIES IS A REGISTERED CHARITY THAT SEEKS TO PROVIDE PRACTICAL SUPPORT FOR THOSE WITH CANCER AND IN WIDER SUFFERING. OUR CHARITY CONTAINS WILDFIRE, WHICH ACTS AS THE YOUTH BRANCH OF THIS CHARITY.

**VOLUNTEERS
LAURA GORDON**



FOUNDED IN 2019, HOPE2FAMILIES IS A REGISTERED CHARITY THAT SEEKS TO PROVIDE PRACTICAL SUPPORT FOR THOSE WITH CANCER AND IN WIDER SUFFERING. OUR CHARITY CONTAINS WILDFIRE, WHICH ACTS AS THE YOUTH BRANCH OF THIS CHARITY.

VOLUNTEERS

IRIS LONEY



FOUNDED IN 2019, HOPE2FAMILIES IS A REGISTERED CHARITY THAT SEEKS TO PROVIDE PRACTICAL SUPPORT FOR THOSE WITH CANCER AND IN WIDER SUFFERING. OUR CHARITY CONTAINS WILDFIRE, WHICH ACTS AS THE YOUTH BRANCH OF THIS CHARITY.

VOLUNTEERS

TABITHA TANASCHE



FOUNDED IN 2019, HOPE2FAMILIES IS A REGISTERED CHARITY THAT SEEKS TO PROVIDE PRACTICAL SUPPORT FOR THOSE WITH CANCER AND IN WIDER SUFFERING. OUR CHARITY CONTAINS WILDFIRE, WHICH ACTS AS THE YOUTH BRANCH OF THIS CHARITY.

VOLUNTEERS

YEONIL TANASCHE



FOUNDED IN 2019, HOPE2FAMILIES IS A REGISTERED CHARITY THAT SEEKS TO PROVIDE PRACTICAL SUPPORT FOR THOSE WITH CANCER AND IN WIDER SUFFERING. OUR CHARITY CONTAINS WILDFIRE, WHICH ACTS AS THE YOUTH BRANCH OF THIS CHARITY.

VOLUNTEERS

AMY LOUISE



WILDFIRE SEEKS TO IGNITE MEN AND WOMEN OF GOD INTO A DEEPER DISCIPLESHIP WITH CHRIST. DISCIPLESHIP MEANING ENCOUNTER WITH JESUS, BAPTISM AND LOCAL BODY PLUG IN. WILDFIRE ACTS AS THE DISCIPLESHIP BRANCH OF HOPE2FAMILIES.

**VOLUNTEERS
CARYS BLACK**



WILDFIRE SEEKS TO IGNITE MEN AND WOMEN OF GOD INTO A DEEPER DISCIPLESHIP WITH CHRIST. DISCIPLESHIP MEANING ENCOUNTER WITH JESUS, BAPTISM AND LOCAL BODY PLUG IN. WILDFIRE ACTS AS THE DISCIPLESHIP BRANCH OF HOPE2FAMILIES.

VOLUNTEERS

HANNAH STEVENS



WILDFIRE SEEKS TO IGNITE MEN AND WOMEN OF GOD INTO A DEEPER DISCIPLESHIP WITH CHRIST. DISCIPLESHIP MEANING ENCOUNTER WITH JESUS, BAPTISM AND LOCAL BODY PLUG IN. WILDFIRE ACTS AS THE DISCIPLESHIP BRANCH OF HOPE2FAMILIES.

**VOLUNTEERS
JOHNNY EADIE**



WILDFIRE SEEKS TO IGNITE MEN AND WOMEN OF GOD INTO A DEEPER DISCIPLESHIP WITH CHRIST. DISCIPLESHIP MEANING ENCOUNTER WITH JESUS, BAPTISM AND LOCAL BODY PLUG IN. WILDFIRE ACTS AS THE DISCIPLESHIP BRANCH OF HOPE2FAMILIES.

VOLUNTEERS

CALEB MOORE



WILDFIRE SEEKS TO IGNITE MEN AND WOMEN OF GOD INTO A DEEPER DISCIPLESHIP WITH CHRIST. DISCIPLESHIP MEANING ENCOUNTER WITH JESUS, BAPTISM AND LOCAL BODY PLUG IN. WILDFIRE ACTS AS THE DISCIPLESHIP BRANCH OF HOPE2FAMILIES.

VOLUNTEERS

SAMUEL MCILMOYLE



WILDFIRE SEEKS TO IGNITE MEN AND WOMEN OF GOD INTO A DEEPER DISCIPLESHIP WITH CHRIST. DISCIPLESHIP MEANING ENCOUNTER WITH JESUS, BAPTISM AND LOCAL BODY PLUG IN. WILDFIRE ACTS AS THE DISCIPLESHIP BRANCH OF HOPE2FAMILIES.

VOLUNTEERS

IONA MAIRS



WILDFIRE SEEKS TO IGNITE MEN AND WOMEN OF GOD INTO A DEEPER DISCIPLESHIP WITH CHRIST. DISCIPLESHIP MEANING ENCOUNTER WITH JESUS, BAPTISM AND LOCAL BODY PLUG IN. WILDFIRE ACTS AS THE DISCIPLESHIP BRANCH OF HOPE2FAMILIES.

VOLUNTEERS
DAN BARFOOT



WILDFIRE SEEKS TO IGNITE MEN AND WOMEN OF GOD INTO A DEEPER DISCIPLESHIP WITH CHRIST. DISCIPLESHIP MEANING ENCOUNTER WITH JESUS, BAPTISM AND LOCAL BODY PLUG IN. WILDFIRE ACTS AS THE DISCIPLESHIP BRANCH OF HOPE2FAMILIES.

VOLUNTEERS

DANIEL PRICE



WILDFIRE SEEKS TO IGNITE MEN AND WOMEN OF GOD INTO A DEEPER DISCIPLESHIP WITH CHRIST. DISCIPLESHIP MEANING ENCOUNTER WITH JESUS, BAPTISM AND LOCAL BODY PLUG IN. WILDFIRE ACTS AS THE DISCIPLESHIP BRANCH OF HOPE2FAMILIES.

VOLUNTEERS

SOPHIE McALLISTER



WILDFIRE SEEKS TO IGNITE MEN AND WOMEN OF GOD INTO A DEEPER DISCIPLESHIP WITH CHRIST. DISCIPLESHIP MEANING ENCOUNTER WITH JESUS, BAPTISM AND LOCAL BODY PLUG IN. WILDFIRE ACTS AS THE DISCIPLESHIP BRANCH OF HOPE2FAMILIES.

**VOLUNTEERS
CONOR O'HAGAN**



WILDFIRE SEEKS TO IGNITE MEN AND WOMEN OF GOD INTO A DEEPER DISCIPLESHIP WITH CHRIST. DISCIPLESHIP MEANING ENCOUNTER WITH JESUS, BAPTISM AND LOCAL BODY PLUG IN. WILDFIRE ACTS AS THE DISCIPLESHIP BRANCH OF HOPE2FAMILIES.

VOLUNTEERS

NOAH BLACK



WILDFIRE SEEKS TO IGNITE MEN AND WOMEN OF GOD INTO A DEEPER DISCIPLESHIP WITH CHRIST. DISCIPLESHIP MEANING ENCOUNTER WITH JESUS, BAPTISM AND LOCAL BODY PLUG IN. WILDFIRE ACTS AS THE DISCIPLESHIP BRANCH OF HOPE2FAMILIES.

VOLUNTEERS

LOIS GLENDINNING



WILDFIRE SEEKS TO IGNITE MEN AND WOMEN OF GOD INTO A DEEPER DISCIPLESHIP WITH CHRIST. DISCIPLESHIP MEANING ENCOUNTER WITH JESUS, BAPTISM AND LOCAL BODY PLUG IN. WILDFIRE ACTS AS THE DISCIPLESHIP BRANCH OF HOPE2FAMILIES.

VOLUNTEERS

MICHAEL BURNSIDE



WILDFIRE SEEKS TO IGNITE MEN AND WOMEN OF GOD INTO A DEEPER DISCIPLESHIP WITH CHRIST. DISCIPLESHIP MEANING ENCOUNTER WITH JESUS, BAPTISM AND LOCAL BODY PLUG IN. WILDFIRE ACTS AS THE DISCIPLESHIP BRANCH OF HOPE2FAMILIES.

VOLUNTEERS

MORIAH SINCLAIR



WILDFIRE SEEKS TO IGNITE MEN AND WOMEN OF GOD INTO A DEEPER DISCIPLESHIP WITH CHRIST. DISCIPLESHIP MEANING ENCOUNTER WITH JESUS, BAPTISM AND LOCAL BODY PLUG IN. WILDFIRE ACTS AS THE DISCIPLESHIP BRANCH OF HOPE2FAMILIES.

**VOLUNTEERS
ADAM DONNELL**



WILDFIRE SEEKS TO IGNITE MEN AND WOMEN OF GOD INTO A DEEPER DISCIPLESHIP WITH CHRIST. DISCIPLESHIP MEANING ENCOUNTER WITH JESUS, BAPTISM AND LOCAL BODY PLUG IN. WILDFIRE ACTS AS THE DISCIPLESHIP BRANCH OF HOPE2FAMILIES.

VOLUNTEERS

JOSHUA STEWART



WILDFIRE SEEKS TO IGNITE MEN AND WOMEN OF GOD INTO A DEEPER DISCIPLESHIP WITH CHRIST. DISCIPLESHIP MEANING ENCOUNTER WITH JESUS, BAPTISM AND LOCAL BODY PLUG IN. WILDFIRE ACTS AS THE DISCIPLESHIP BRANCH OF HOPE2FAMILIES.

VOLUNTEERS

SOPHIE WIGHTMAN



WILDFIRE SEEKS TO IGNITE MEN AND WOMEN OF GOD INTO A DEEPER DISCIPLESHIP WITH CHRIST. DISCIPLESHIP MEANING ENCOUNTER WITH JESUS, BAPTISM AND LOCAL BODY PLUG IN. WILDFIRE ACTS AS THE DISCIPLESHIP BRANCH OF HOPE2FAMILIES.

VOLUNTEERS

MARC TAYLOR



WILDFIRE SEEKS TO IGNITE MEN AND WOMEN OF GOD INTO A DEEPER DISCIPLESHIP WITH CHRIST. DISCIPLESHIP MEANING ENCOUNTER WITH JESUS, BAPTISM AND LOCAL BODY PLUG IN. WILDFIRE ACTS AS THE DISCIPLESHIP BRANCH OF HOPE2FAMILIES.

VOLUNTEERS

HEATHER TAYLOR



WILDFIRE SEEKS TO IGNITE MEN AND WOMEN OF GOD INTO A DEEPER DISCIPLESHIP WITH CHRIST. DISCIPLESHIP MEANING ENCOUNTER WITH JESUS, BAPTISM AND LOCAL BODY PLUG IN. WILDFIRE ACTS AS THE DISCIPLESHIP BRANCH OF HOPE2FAMILIES.

**VOLUNTEERS
JOHNNY MAIRS**



WILDFIRE SEEKS TO IGNITE MEN AND WOMEN OF GOD INTO A DEEPER DISCIPLESHIP WITH CHRIST. DISCIPLESHIP MEANING ENCOUNTER WITH JESUS, BAPTISM AND LOCAL BODY PLUG IN. WILDFIRE ACTS AS THE DISCIPLESHIP BRANCH OF HOPE2FAMILIES.

**VOLUNTEERS
JACOB M-CRAIG**



WILDFIRE SEEKS TO IGNITE MEN AND WOMEN OF GOD INTO A DEEPER DISCIPLESHIP WITH CHRIST. DISCIPLESHIP MEANING ENCOUNTER WITH JESUS, BAPTISM AND LOCAL BODY PLUG IN. WILDFIRE ACTS AS THE DISCIPLESHIP BRANCH OF HOPE2FAMILIES.

**VOLUNTEERS
CALEB NGYUTIN**



WILDFIRE SEEKS TO IGNITE MEN AND WOMEN OF GOD INTO A DEEPER DISCIPLESHIP WITH CHRIST. DISCIPLESHIP MEANING ENCOUNTER WITH JESUS, BAPTISM AND LOCAL BODY PLUG IN. WILDFIRE ACTS AS THE DISCIPLESHIP BRANCH OF HOPE2FAMILIES.

**VOLUNTEERS
DAN MAIRS**



WILDFIRE SEEKS TO IGNITE MEN AND WOMEN OF GOD INTO A DEEPER DISCIPLESHIP WITH CHRIST. DISCIPLESHIP MEANING ENCOUNTER WITH JESUS, BAPTISM AND LOCAL BODY PLUG IN. WILDFIRE ACTS AS THE DISCIPLESHIP BRANCH OF HOPE2FAMILIES.

**VOLUNTEERS
JAKE SPEERS**



WILDFIRE SEEKS TO IGNITE MEN AND WOMEN OF GOD INTO A DEEPER DISCIPLESHIP WITH CHRIST. DISCIPLESHIP MEANING ENCOUNTER WITH JESUS, BAPTISM AND LOCAL BODY PLUG IN. WILDFIRE ACTS AS THE DISCIPLESHIP BRANCH OF HOPE2FAMILIES.

**VOLUNTEERS
SARAH REID**



WILDFIRE SEEKS TO IGNITE MEN AND WOMEN OF GOD INTO A DEEPER DISCIPLESHIP WITH CHRIST. DISCIPLESHIP MEANING ENCOUNTER WITH JESUS, BAPTISM AND LOCAL BODY PLUG IN. WILDFIRE ACTS AS THE DISCIPLESHIP BRANCH OF HOPE2FAMILIES.

VOLUNTEERS
DILLON TAYLOR



WILDFIRE SEEKS TO IGNITE MEN AND WOMEN OF GOD INTO A DEEPER DISCIPLESHIP WITH CHRIST. DISCIPLESHIP MEANING ENCOUNTER WITH JESUS, BAPTISM AND LOCAL BODY PLUG IN. WILDFIRE ACTS AS THE DISCIPLESHIP BRANCH OF HOPE2FAMILIES.

VOLUNTEERS
LUKE TAYLOR



WILDFIRE SEEKS TO IGNITE MEN AND WOMEN OF GOD INTO A DEEPER DISCIPLESHIP WITH CHRIST. DISCIPLESHIP MEANING ENCOUNTER WITH JESUS, BAPTISM AND LOCAL BODY PLUG IN. WILDFIRE ACTS AS THE DISCIPLESHIP BRANCH OF HOPE2FAMILIES.

VOLUNTEERS

PETER WRIGHT



WILDFIRE SEEKS TO IGNITE MEN AND WOMEN OF GOD INTO A DEEPER DISCIPLESHIP WITH CHRIST. DISCIPLESHIP MEANING ENCOUNTER WITH JESUS, BAPTISM AND LOCAL BODY PLUG IN. WILDFIRE ACTS AS THE DISCIPLESHIP BRANCH OF HOPE2FAMILIES.

**VOLUNTEERS
TIERNA GILL**



WILDFIRE SEEKS TO IGNITE MEN AND WOMEN OF GOD INTO A DEEPER DISCIPLESHIP WITH CHRIST. DISCIPLESHIP MEANING ENCOUNTER WITH JESUS, BAPTISM AND LOCAL BODY PLUG IN. WILDFIRE ACTS AS THE DISCIPLESHIP BRANCH OF HOPE2FAMILIES.

**VOLUNTEERS
EWAN WILLIAMS**



WILDFIRE SEEKS TO IGNITE MEN AND WOMEN OF GOD INTO A DEEPER DISCIPLESHIP WITH CHRIST. DISCIPLESHIP MEANING ENCOUNTER WITH JESUS, BAPTISM AND LOCAL BODY PLUG IN. WILDFIRE ACTS AS THE DISCIPLESHIP BRANCH OF HOPE2FAMILIES.

VOLUNTEERS

MARK CROOKS



WILDFIRE SEEKS TO IGNITE MEN AND WOMEN OF GOD INTO A DEEPER DISCIPLESHIP WITH CHRIST. DISCIPLESHIP MEANING ENCOUNTER WITH JESUS, BAPTISM AND LOCAL BODY PLUG IN. WILDFIRE ACTS AS THE DISCIPLESHIP BRANCH OF HOPE2FAMILIES.

VOLUNTEERS

AMY LOUISE



FOUNDED IN 2019, HOPE2FAMILIES IS A REGISTERED CHARITY THAT SEEKS TO PROVIDE PRACTICAL SUPPORT FOR THOSE WITH CANCER AND IN WIDER SUFFERING. OUR CHARITY CONTAINS WILDFIRE, WHICH ACTS AS THE YOUTH BRANCH OF THIS CHARITY.

LEGALITY



Child protection lead
Safety | Fire | Hygiene Officer

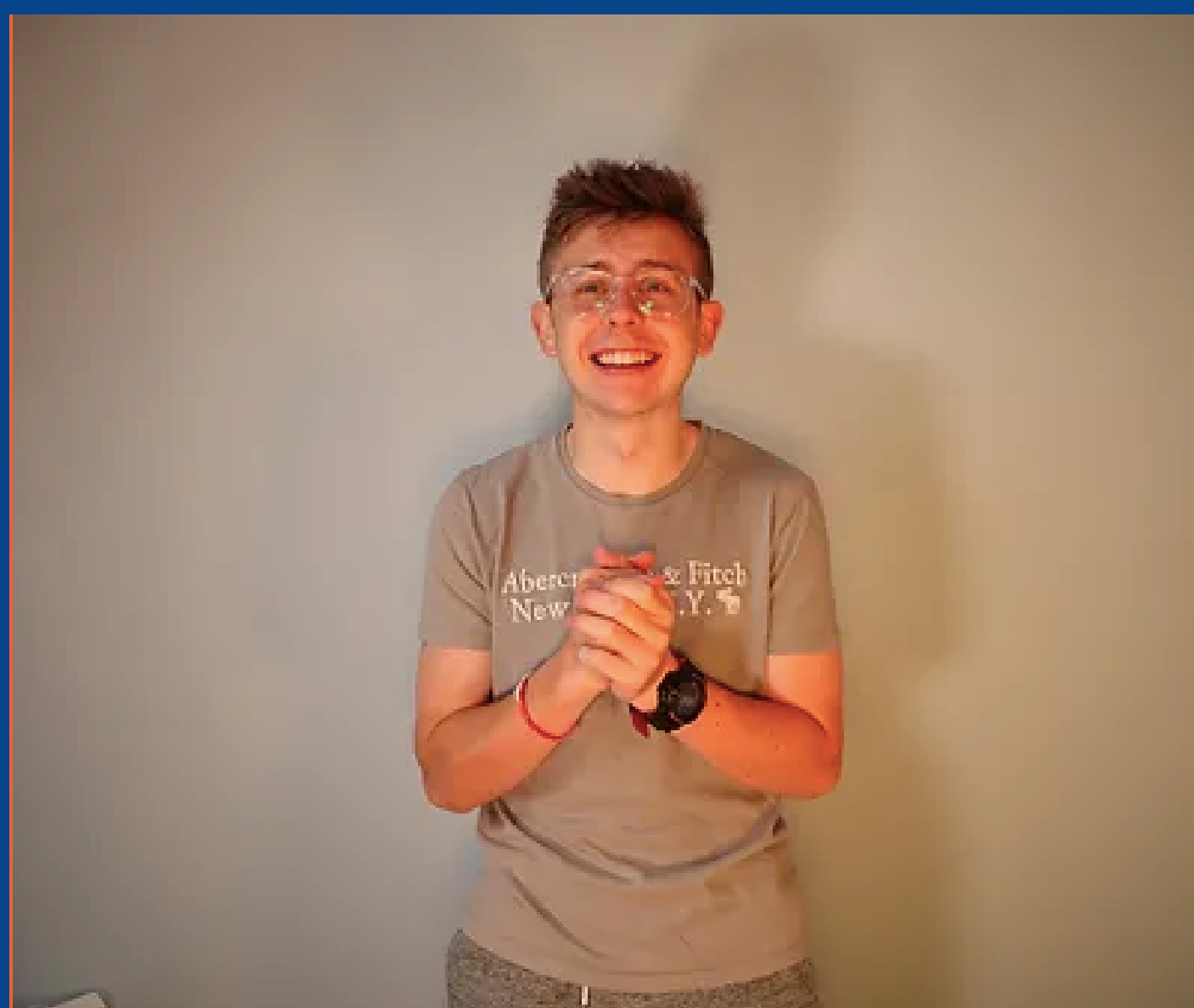
Marc Taylor

Ensuring safety in our charity is our priority.



FOUNDED IN 2019, HOPE2FAMILIES IS A REGISTERED CHARITY THAT SEEKS TO PROVIDE PRACTICAL SUPPORT FOR THOSE WITH CANCER AND IN WIDER SUFFERING. OUR CHARITY CONTAINS WILDFIRE, WHICH ACTS AS THE YOUTH BRANCH OF THIS CHARITY.

LEGALITY



Deputy child protection lead

Luke Taylor

Ensuring safety in our charity is our priority.



FOUNDED IN 2019, HOPE2FAMILIES IS A REGISTERED CHARITY THAT SEEKS TO PROVIDE PRACTICAL SUPPORT FOR THOSE WITH CANCER AND IN WIDER SUFFERING. OUR CHARITY CONTAINS WILDFIRE, WHICH ACTS AS THE YOUTH BRANCH OF THIS CHARITY.

LEGALITY



Deputy Child Protection lead

Heather Taylor

Ensuring safety in our charity is our priority.



FOUNDED IN 2019, HOPE2FAMILIES IS A REGISTERED CHARITY THAT SEEKS TO PROVIDE PRACTICAL SUPPORT FOR THOSE WITH CANCER AND IN WIDER SUFFERING. OUR CHARITY CONTAINS WILDFIRE, WHICH ACTS AS THE YOUTH BRANCH OF THIS CHARITY.

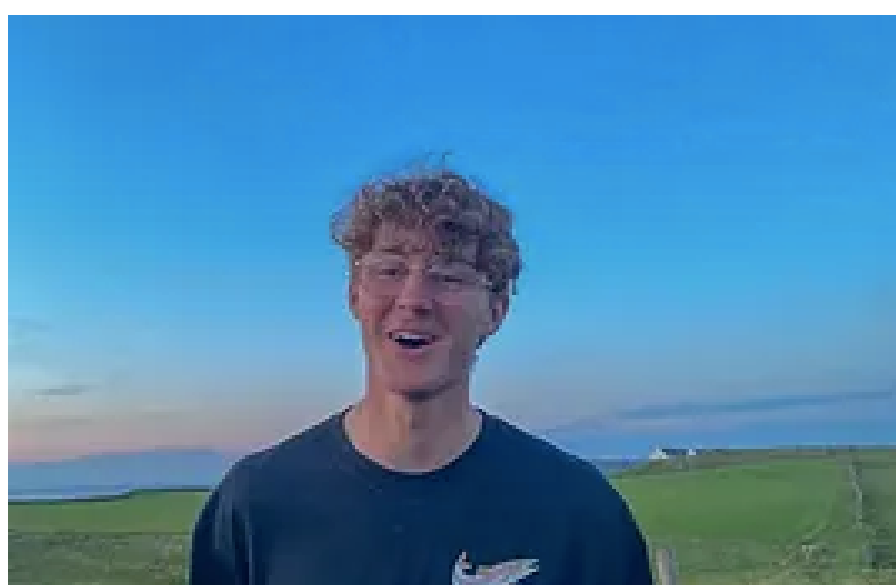
LEGALITY



FIRST AID TRAINED



FIRST AID TRAINED



FOUNDED IN 2019, HOPE2FAMILIES IS A REGISTERED CHARITY THAT SEEKS TO PROVIDE PRACTICAL SUPPORT FOR THOSE WITH CANCER AND IN WIDER SUFFERING. OUR CHARITY CONTAINS WILDFIRE, WHICH ACTS AS THE YOUTH BRANCH OF THIS CHARITY.

LEGALITY

ACCOUNTANT | STEVE POTTER

Potter Finnegan Ltd 
Chartered Accountants

Potter Finnegan Ltd 
Chartered Accountants

Potter Finnegan Ltd 
Chartered Accountants

FOUNDED IN 2019, HOPE2FAMILIES IS A REGISTERED CHARITY THAT SEEKS TO PROVIDE PRACTICAL SUPPORT FOR THOSE WITH CANCER AND IN WIDER SUFFERING. OUR CHARITY CONTAINS WILDFIRE, WHICH ACTS AS THE YOUTH BRANCH OF THIS CHARITY.

LEGALITY

EXTERNAL TREASURER STILL TO BE INSTALLED

An abstract image featuring a dense, textured background of red and white paint splatters and brushstrokes. The red is the dominant color, with white and grey tones interspersed, creating a dynamic and somewhat chaotic visual effect.

coming
soon

FOUNDED IN 2019, HOPE2FAMILIES IS A REGISTERED CHARITY THAT SEEKS TO PROVIDE PRACTICAL SUPPORT FOR THOSE WITH CANCER AND IN WIDER SUFFERING. OUR CHARITY CONTAINS WILDFIRE, WHICH ACTS AS THE YOUTH BRANCH OF THIS CHARITY.

LEGALITY

SAFEGUARDING POLICIES

[ALL POLICIES CAN BE FOUND BY CLICKING THIS](#)

1

HOPE2FAMILIES SAFEGUARDING POLICY

Safeguarding policy

2

70 Long Commons Coleraine
Coleraine, BT52 1LH
07856201383
wildfireministrys@gmail.com

Table of Contents:

The purpose and scope of this policy statement:	4
Policy Basis:	5
Major focuses of our safeguarding policy statement:	10
Recruiting and selecting staff and volunteers:	11
Training, Management & Oversight:	12
Photographing and filming policy statement:	14
Online Safety:	19
Having a conversation:	23
Disciplinary action:	25
Auditing our safeguarding policy consistently:	28
Behaviour Code:	29
Reporting concerns:	32
Responding to an emergency phone call:	36

FOUNDED IN 2019, HOPE2FAMILIES IS A REGISTERED CHARITY THAT SEEKS TO PROVIDE PRACTICAL SUPPORT FOR THOSE WITH CANCER AND IN WIDER SUFFERING. OUR CHARITY CONTAINS WILDFIRE, WHICH ACTS AS THE YOUTH BRANCH OF THIS CHARITY.

LEGALITY

COMPANIES HOUSE

[COMPANIES SHOUSE WEBSITE CAN BE FOUND CLICKING THIS](#)

Overview [Filing history](#) [People](#) [More](#)

Registered office address
15 Ballyveely Road, Ballymoney, County Antrim, United Kingdom, BT53 8UX

Company status
Active

Company type
Private Limited Company by guarantee without share capital use of 'Limited' exemption

Incorporated on
18 June 2021

Accounts

Next accounts made up to **30 June 2023**
due by **31 March 2024**

Last accounts made up to **30 June 2022**

Confirmation statement

Next statement date **17 June 2024**
due by **1 July 2024**

Last statement dated **17 June 2023**

Nature of business (SIC)

94910 - Activities of religious organisations

 **GOV.UK** Find and u

Companies House does not verify the accuracy of the information

Search for a company or officer

[Advanced company search](#)

HOPE2FAMILIES

Company number **NI680144**

[Follow this company](#) [File for this company](#)

Search for a company or officer

[Advanced company search](#)

HOPE2FAMILIES

Company number **NI680144**



HOPE2FAMILIES



INFORMATION **HOPE2FAMILIES & WILDFIRE** **PACK**