



HOPE2FAMILIES



# **INFORMATION** **HOPE2FAMILIES & WILDFIRE** **PACK**

**FOUNDED IN 2019, HOPE2FAMILIES IS A REGISTERED CHARITY THAT SEEKS TO PROVIDE PRACTICAL SUPPORT FOR THOSE WITH CANCER AND IN WIDER SUFFERING. OUR CHARITY CONTAINS WILDFIRE, WHICH ACTS AS THE YOUTH BRANCH OF THIS CHARITY.**

## **THE WHAT!**

### **WHAT WE STAND FOR**

**YOU ALWAYS HAVE TO START WITH THE WHAT BEFORE ANYTHING ELSE!**

### **OUR WHAT IS FOURFOLD:**

- 1. PES SUPPORT FOR FAMILIES | WE WANT TO PROVIDE PRACTICAL, EMOTIONAL AND SPIRITUAL SUPPORT FOR FAMILIES THAT COME OUR WAY, SPECIFICALLY THOSE BATTLING WITH CANCER.**
- 2. INSTILLING HOPE FOR FAMILIES | WE WANT TO INSTIL HOPE TO ANY INDIVIDUAL WHO COMES IN CONTACT WITH OUR CHARITY**
- 3. RESTORATION FOR FAMILIES | WE WANT TO PROVIDE RESTORATION FOR CHILDREN, PARENTS AND FAMILIES; MENDING WOUNDS AND HEALING HURTS.**
- 4. RAISING AWARENESS FOR FAMILIES | WE WANT TO RAISE AWARENESS FOR CANCER SUFFERERS, THOSE WITH ADDICTION AND IMPOVERISHED FAMILIES, PROVIDING THEM FINANCIAL SUPPORT AND MAKING PEOPLE AWARE OF THE DIFFICULT SITUATIONS FAMILIES ARE SO OFTEN PLUNGED INTO.**



**FOUNDED IN 2019, HOPE2FAMILIES IS A REGISTERED CHARITY THAT SEEKS TO PROVIDE PRACTICAL SUPPORT FOR THOSE WITH CANCER AND IN WIDER SUFFERING. OUR CHARITY CONTAINS WILDFIRE, WHICH ACTS AS THE YOUTH BRANCH OF THIS CHARITY.**

## **THE WHY!**

### **WHY WE DO WHAT WE DO**

**FOR EVERY WHAT THERE IS A WHY? AND THE WHY HAS TO BE THE MOTIVATION THAT DRIVES ANYTHING.**

### **OUR WHY IS FOURFOLD:**

- **OUR STORY | ON THE EVE OF THE FIRST LOCKDOWN, USHERED IN BY THE PANDEMIC, MARC TAYLOR WAS DIAGNOSED WITH CANCER, MARKING THE BEGINNING OF A JOURNEY THAT SO MANY HAD MADE BEFORE HIM, AND SO MANY WOULD MAKE IN THE FUTURE. HAVING COME THROUGH THE OTHER SIDE, MARC, ALONG WITH HIS SON, SET UP 'HOPE2FAMILIES.'**
- **EXPOSURE TO THE DEVASTATION | THE DEVASTATION OUT THERE IN FAMILIES WOULD MOTIVATE ANYONE TO REACH OUT A MESSAGE OF HOPE, ESPECIALLY THOSE WHO PROFESS TO KNOW CHRIST.**
- **SEEING A NEED AND MEETING THE NEED | WHEN CONFRONTED WITH FAMILIES WHO ARE BROKEN WITHIN OUR LOCAL COMMUNITIES, WHO DO THEY TURN TO, WHO CAN JOURNEY WITH THEM DAY BY DAY?**
- **PUTTING FEET TO IT | COMPASSION NECESSITATES ACTION, THIS CHARITY IS OUR ACTION, THAT WE HOPE WILL BEGIN A PRECEDENT THAT SEES GENERATIONS RESPOND TO THE CALL.**

**FOUNDED IN 2019, HOPE2FAMILIES IS A REGISTERED CHARITY THAT SEEKS TO PROVIDE PRACTICAL SUPPORT FOR THOSE WITH CANCER AND IN WIDER SUFFERING. OUR CHARITY CONTAINS WILDFIRE, WHICH ACTS AS THE YOUTH BRANCH OF THIS CHARITY.**

## **THE HOW!**

### **THE HOW WE DO IT**

**HOW THEN DO WE ACHIEVE OUR WHAT AND MEET OUR MOTIVATION - THAT IS OUR WHY!**

### **OUR HOW IS FOURFOLD:**

**1. DIVERSE ONLINE CONTENT. WE LIVE IN AN AGE OF TECHNOLOGY, SO WE WANT TO UTILISE IT. WE UPLOAD VARIOUS CONTENT ON A RANGE OF PLATFORMS, INCLUDING PODCASTS.**

### **2. OUR PROGRAMS.**

**POVERTY CARE**

**CANCER CARE**

**ELDER CARE**

### **3. EVENTS.**

**- CHRISTMAS DINNER**

**- EASTER EVENT**

**- SUMMER TENT MISSION**

**- WEDNESDAY NIGHT BIBLE STUDY**

**4. TEAMS FOR HOPE. HOW WE REACH THE FAMILIES IN OUR COMMUNITIES IS PARAMOUNT. PAINTING, GARDENING, HELPING WITH MOVES AND MORE.**

**FOUNDED IN 2019, HOPE2FAMILIES IS A REGISTERED CHARITY THAT SEEKS TO PROVIDE PRACTICAL SUPPORT FOR THOSE WITH CANCER AND IN WIDER SUFFERING. OUR CHARITY CONTAINS WILDFIRE, WHICH ACTS AS THE YOUTH BRANCH OF THIS CHARITY.**

## **THE WHERE!**

### **THE WHERE YOU CAN FIND US**

**WHERE DO YOU GO FROM HERE? HOW CAN YOU GET INVOLVED OR TRACK WHAT WE WILL BE DOING?**

#### **OUR WHERE IS FOURFOLD:**

**1. SOCIAL MEDIA. YOU CAN FIND US ON ANY WIDELY USED SOCIAL MEDIA!**

**-OUR INSTAGRAM**

**-OUR FACEBOOK**

**-OUR TWITTER**

**-OUR TIKTOK**

**-OUR VISCO**

**-OUR SNAPCHAT**

**-OUR LINKEDIN**

**ALL OF THAT CAN BE FOUND HERE VIA THIS LINK**

**[HTTPS://LINKTR.EE/HOPE2FAMILIES](https://linktr.ee/hope2families)**

**2. OUR WEBSITE. YOU CAN FIND EVERYTHING YOU NEED TO KNOW ABOUT US VIA OUR WEBSITE**

**[HTTPS://HOPE2FAMILIES.COM](https://hope2families.com)**

**3. OUR BUILDING. WE ARE LOCATED IN COLERAINE, NORTHERN IRELAND, LONG COMMONS CAR PARK.**

**EVERYTHING IN ONE LINK: [HTTPS://LINKTR.EE/HOPE2FAMILIES](https://linktr.ee/hope2families)**

**WILDFIRE SEEKS TO IGNITE MEN AND WOMEN OF GOD INTO A DEEPER DISCIPLESHIP WITH CHRIST. DISCIPLESHIP MEANING ENCOUNTER WITH JESUS, BAPTISM AND LOCAL BODY PLUG IN. WILDFIRE ACTS AS THE DISCIPLESHIP BRANCH OF HOPE2FAMILIES.**

### **THE WHAT!**

#### **WHAT WE STAND FOR**

**YOU ALWAYS HAVE TO START WITH THE WHAT BEFORE ANYTHING ELSE!**

#### **OUR WHAT IS FOURFOLD:**

- 1. DISCIPLING THE INDIVIDUAL. ENSURING PEOPLE GET PLUGGED IN.**
- 2. THE INDIVIDUAL DISCIPLING. CREATING A RHETORIC OF PAUL AND TIMOTHY'S. WE WANT THE 'STUDENTS' TO BECOME FULLY TRAINED AND THEN BECOME THE 'TEACHER.'**
- 3. CREATING A NETWORK OF UNITY. WE HAVE FORGOTTEN UNITY, WE HAVE FORGOTTEN ITS IMPORTANCE, WITHIN WILDFIRE WE TAKE SERIOUSLY WHAT JESUS SAID: "BE ONE JUST AS ME AND THE FATHER ARE ONE." WE WANT TO UNIFY CHURCHES, COMMUNITIES AND PEOPLE UNDER GOD'S LOVE.**
- 4. HAVING FUN. PERHAPS WE HAVE LOST YOU ON THIS? THAT IS PRECISELY THE POINT, PERCEPTIONS OF THE CHRISTIAN FAITH AND CHARITY ORGANISATIONS IS THAT THEY HAVE TO BE SERIOUS! IN EVERYTHING WE DO WE HAVE FUN! WHY! BECAUSE WE HAVE THIS JUBILANCE THAT CANNOT BE CONTAINED THAT IS PREDICATED UPON A POSTURE OF GRATITUDE FOR WHAT GOD HAS DONE.**

**WILDFIRE SEEKS TO IGNITE MEN AND WOMEN OF GOD INTO A DEEPER DISCIPLESHIP WITH CHRIST. DISCIPLESHIP MEANING ENCOUNTER WITH JESUS, BAPTISM AND LOCAL BODY PLUG IN. WILDFIRE ACTS AS THE DISCIPLESHIP BRANCH OF HOPE2FAMILIES.**

## **THE WHY!**

### **WHY WE DO WHAT WE DO**

**FOR EVERY WHAT THERE IS A WHY? AND THE WHY HAS TO BE THE MOTIVATION THAT DRIVES ANYTHING.**

### **OUR WHY IS FOURFOLD:**

- 1. BEING CONDUCTORS OF GOD'S LOVE IN OUR LIVES. WE ARE BEING TRANSFORMED AND EDUCATED IN GOD'S LOVE EVERYDAY, WE WANT TO BE CONDUITS OF GOD'S LOVE, NOT CULDESAC'S. FOR EVERY INTERNAL CHANGE, THERE IS AN EXTERNAL EXPRESSION PAIRED WITH IT.**
- 2. DAY TO DAY NEED. SO OFTEN OR NOT WE HEAR THE COMMON PHRASES REVERBERATE THROUGHOUT OUR CONVERSATIONS IN WORK AND UNI; MY RELATIONSHIP WITH GOD IS OKAY, I AM UP AND DOWN, I AM STRUGGLING, MY PRAYER LIFE ISN'T GOOD, MY DEVOTIONAL LIFE ISN'T GOOD, I AM OVERWHELMED, UNEQUIPPED! SHOULD WE SETTLE FOR THIS BEING THE NORMAL AND COMMON RHETORIC! No, at WILDFIRE WE ARE DISSATISFIED WITH THIS TO THE POINT OF MOBILISED CHANGE. WE WANT THE CONVERSATIONS TO BE SATURATED WITH JOY AND PASSION, ALL OF WHICH IS BIRTHED FROM GOD'S LOVE.**



**WILDFIRE SEEKS TO IGNITE MEN AND WOMEN OF GOD INTO A DEEPER DISCIPLESHIP WITH CHRIST. DISCIPLESHIP MEANING ENCOUNTER WITH JESUS, BAPTISM AND LOCAL BODY PLUG IN. WILDFIRE ACTS AS THE DISCIPLESHIP BRANCH OF HOPE2FAMILIES.**

## **THE WHY!**

### **WHY WE DO WHAT WE DO**

**FOR EVERY WHAT THERE IS A WHY? AND THE WHY HAS TO BE THE MOTIVATION THAT DRIVES ANYTHING.**

### **OUR WHY IS FOURFOLD:**

- 3. SEEING A NEED AND MEETING A NEED. WE SEE MANY SEEDS BEING PLANTED WITHIN OUR OWN COMMUNITY AND ABROAD; THIS IS EVANGELISM, PROCLAIMING THE TRUTH SO THAT HEARTS MAY BELIEVE AND TONGUES MAY CONFESS. BUT WE AS A CHARITY WANT TO FOCUS ON THE REAPING, RECOGNISING THAT THERE ARE THOSE WHO SOW AND THOSE WHO REAP- TWO DIFFERENT ROLES. WE WANT TO CONTINUE THE WORK OF OUR BROTHERS AND SISTERS IN CHRIST ARE PLUGGED INTO A LOCAL BODY.**
- 4. EVERYTHING HAS AND CONTINUES TO GROW LIKE A WILDFIRE. THE ORIGIN OF THIS NAME AND ETHOS IS COMPLETELY INSPIRED BY GOD AND IS WHAT GOD HAS LAID ON OUR HEARTS. WHEN WE LOOK AT THE HISTORY OF THIS CHARITY, WE SEE THE FULFILMENT OF WHAT JESUS TAUGHT ABOUT WITH REGARDS TO HIS KINGDOM BEING A MUSTARD SEED, BUT GROWING! WILDFIRE WAS SMALL, BUT LIKE THE KINGDOM GROWS, WE HAVE GROWN, BY HELPING GROW THE KINGDOM.**



**WILDFIRE SEEKS TO IGNITE MEN AND WOMEN OF GOD INTO A DEEPER DISCIPLESHIP WITH CHRIST. DISCIPLESHIP MEANING ENCOUNTER WITH JESUS, BAPTISM AND LOCAL BODY PLUG IN. WILDFIRE ACTS AS THE DISCIPLESHIP BRANCH OF HOPE2FAMILIES.**

## **THE HOW!**

### **THE HOW WE DO IT**

**HOW THEN DO WE ACHIEVE OUR WHAT AND MEET OUR MOTIVATION, THAT IS OUR WHY!**

### **OUR HOW IS FOURFOLD:**

- 1. 1. DIVERSE ONLINE CONTENT. WE LIVE IN AN AGE OF TECHNOLOGY, SO WE UTILISE IT COMPLETELY FOR GOD.**
  - MONDAY/ BLOGS**
  - WEDNESDAY/ MINI SERIES**
  - FRIDAY/ PODCAST**
  - SUNDAY/ PRAISE**
- 2. DISCIPLESHIP PROGRAMS. THESE ARE THE MAIN EXPRESSIONS OF DISCIPLESHIP WITHIN OUR MINISTRY.**
  - PAUL AND TIMOTHY DISCIPLESHIP PROGRAM.**
  - SOW AND REAP DISCIPLESHIP PROGRAM.**
  - FOOTBALL DISCIPLESHIP PROGRAM.**

**WILDFIRE SEEKS TO IGNITE MEN AND WOMEN OF GOD INTO A DEEPER DISCIPLESHIP WITH CHRIST. DISCIPLESHIP MEANING ENCOUNTER WITH JESUS, BAPTISM AND LOCAL BODY PLUG IN. WILDFIRE ACTS AS THE DISCIPLESHIP BRANCH OF HOPE2FAMILIES.**

## **THE HOW!**

### **THE HOW WE DO IT**

**HOW THEN DO WE ACHIEVE OUR WHAT AND MEET OUR MOTIVATION, THAT IS OUR WHY!**

**3. EVENTS. OUR BUILDING IS THE HUB FOR ALL OUR ACTIVITY! ALL OUR EVENTS!**

### **ALL OUR RESOURCES!**

- 'WILDFIRE NIGHTS'**
- 'HOUSE OF PRAYER'**
- 'WILDFIRE CHILL'**
- 'WILDFIRE HOTSPOTS' (SMALL GROUPS)**

## **4. TEAMS.**

### **VOCATIONAL VACATION**

WILDFIRE SEEKS TO IGNITE MEN AND WOMEN OF GOD INTO A DEEPER DISCIPLESHIP WITH CHRIST. DISCIPLESHIP MEANING ENCOUNTER WITH JESUS, BAPTISM AND LOCAL BODY PLUG IN. WILDFIRE ACTS AS THE DISCIPLESHIP BRANCH OF HOPE2FAMILIES.

## THE WHERE!

THE WHERE YOU CAN FIND US

WHERE DO YOU GO FROM HERE? HOW CAN YOU GET INVOLVED OR TRACK WHAT WE WILL BE DOING?

OUR WHERE IS FOURFOLD:

SOCIAL MEDIA. YOU CAN FIND US ON ANY WIDELY USED SOCIAL MEDIA!

-OUR INSTAGRAM

WILDFIREMINISTRY

[HTTPS://WWW.INSTAGRAM.COM/WILDFIREMINISTRY/](https://www.instagram.com/wildfireministry/)

-OUR FACEBOOK

WILDFIRE

[HTTPS://WWW.FACEBOOK.COM/DECIDEDISCIPLEDECLARE](https://www.facebook.com/decidediscipledeclare)

-OUR TWITTER

WILDFIRE

[HTTPS://MOBILE.TWITTER.COM/SESSION/NEW](https://mobile.twitter.com/session/new)

WILDFIRE SEEKS TO IGNITE MEN AND WOMEN OF GOD INTO A DEEPER DISCIPLESHIP WITH CHRIST. DISCIPLESHIP MEANING ENCOUNTER WITH JESUS, BAPTISM AND LOCAL BODY PLUG IN. WILDFIRE ACTS AS THE DISCIPLESHIP BRANCH OF HOPE2FAMILIES.

-OUR TIKTOK

WILDFIRE

[HTTPS://WWW.TIKTOK.COM/@WILDFIREMINISTRIES1](https://www.tiktok.com/@wildfireministries1)

-OUR VISCO

WILDFIRE

-OUR SNAPCHAT

WILDFIRE

-OUR LINKEDIN

WILDFIRE

**WILDFIRE SEEKS TO IGNITE MEN AND WOMEN OF GOD INTO A DEEPER DISCIPLESHIP WITH CHRIST. DISCIPLESHIP MEANING ENCOUNTER WITH JESUS, BAPTISM AND LOCAL BODY PLUG IN. WILDFIRE ACTS AS THE DISCIPLESHIP BRANCH OF HOPE2FAMILIES.**

### **OUR PODCAST**

#### **WILDFIRE PODCAST**

**WILDFIRE PODCAST HAS A FOCUS OF SIMPLY LOOKING AT GOD'S WORD THROUGH A CONVERSATION. OUR ASPIRATION IS TO UPLOAD ONE PODCAST A WEEK, IN WHICH WE INTERRELATE BETWEEN BIBLE BOOKS AND BIBLE TOPICS. WITHIN TWO YEARS WE HOPE TO HAVE DONE ALL THE BOOKS OF THE BIBLE AND ADDRESSED SOME OF THE KEY ISSUES THAT ARE THE CENTRAL NERVOUS SYSTEM OF OUR SOCIETY.**

**[HTTPS://WILDFIREPODCAST.BUZZSPROUT.COM](https://wildfirepodcast.buzzsprout.com)**

### **OUR YOUTUBE**

#### **TAILORED THEOLOGY**

**THIS IS OUR YOUTUBE CHANNEL, HERE YOU CAN FIND MORE CONTENT! ON THIS CHANNEL WE COVER APOLOGETICS, EXEGESIS, EXPOSITORY TEACHING, EVANGELISM, CULTURAL ISSUES AND EVERYTHING AND ANYTHING AS IT RELATES TO THE BIBLE.**

**[HTTPS://WWW.YOUTUBE.COM/CHANNEL/UCi7UAV0BKBRWOFDG2OUXEEW](https://www.youtube.com/channel/UCi7UAV0BKBRWOFDG2OUXEEW)**

WILDFIRE SEEKS TO IGNITE MEN AND WOMEN OF GOD INTO A DEEPER  
DISCIPLESHIP WITH CHRIST. DISCIPLESHIP MEANING ENCOUNTER WITH  
JESUS, BAPTISM AND LOCAL BODY PLUG IN. WILDFIRE ACTS AS THE  
DISCIPLESHIP BRANCH OF HOPE2FAMILIES.

OUR PRAISE TEAM. YOU CAN FIND ALL OF OUR PRAISE LEADERS ON MORE THAN 11  
STREAMING PLATFORMS!

SPOTIFY

APPLE MUSIC

YOUTUBE

TIDAL

[HTTPS://FANLINK.TO/WILDFIREPRAISEW](https://fanlink.to/wildfirepraisew)

OUR WEBSITE. YOU CAN FIND EVERYTHING YOU NEED TO KNOW ABOUT US!  
LEADERS, EVENTS AND MORE.

[HTTPS://WWW.WILDFIREMINISTRIES.ONLINE](https://www.wildfireministries.online)

EVERYTHING IN ONE LINK: [HTTPS://LINKTR.EE/WILDFIREMINISTRIES](https://linktr.ee/wildfireministries)

IGNITING MEN AND WOMEN OF GOD INTO A DEEPER DISCIPLESHIP.  
DISCIPLESHIP  
ENCOUNTER WITH JESUS  
BAPTISM  
LOCAL BODY PLUG IN

WE ARE NOT A LOCAL BODY, BUT ARE APART OF THE GLOBAL BODY THAT IS  
USED AS A TOOL FOR THE LOCAL BODY.



**WILDFIRE SEEKS TO IGNITE MEN AND WOMEN OF GOD INTO A DEEPER DISCIPLESHIP WITH CHRIST. DISCIPLESHIP MEANING ENCOUNTER WITH JESUS, BAPTISM AND LOCAL BODY PLUG IN. WILDFIRE ACTS AS THE DISCIPLESHIP BRANCH OF HOPE2FAMILIES.**



FOUNDED IN 2019, HOPE2FAMILIES IS A REGISTERED CHARITY THAT SEEKS TO PROVIDE PRACTICAL SUPPORT FOR THOSE WITH CANCER AND IN WIDER SUFFERING. OUR CHARITY CONTAINS WILDFIRE, WHICH ACTS AS THE YOUTH BRANCH OF THIS CHARITY.



HOPE TO  
WHAT?  
WHAT?

ADDRESSING PERCEPTION  
SHOWING THE REALITY  
WHAT HOPE2FAMILIES IS AND ISN'T COMMUNICATING CLEARLY  
PROVIDING CLARITY BEHIND THE SCENES

FOUNDED IN 2019, HOPE2FAMILIES IS A REGISTERED CHARITY THAT SEEKS TO PROVIDE PRACTICAL SUPPORT FOR THOSE WITH CANCER AND IN WIDER SUFFERING. OUR CHARITY CONTAINS WILDFIRE, WHICH ACTS AS THE YOUTH BRANCH OF THIS CHARITY.

**VOLUNTEER ACCOUNTABILITY**



**APPROACH NECESSARY AREAS OF ACCOUNTABILITY DEPENDING ON THE NATURE OR SEVERITY OF THE OFFENCE.**

**FOUNDED IN 2019, HOPE2FAMILIES IS A REGISTERED CHARITY THAT SEEKS TO PROVIDE PRACTICAL SUPPORT FOR THOSE WITH CANCER AND IN WIDER SUFFERING. OUR CHARITY CONTAINS WILDFIRE, WHICH ACTS AS THE YOUTH BRANCH OF THIS CHARITY.**

## **VOLUNTEER ACCOUNTABILITY THE ROLE**

**1**  
**LOW RESPONSIBILITY**

**2**  
**LOW EXPECTATION**

**3**  
**LOW COMMITMENT**

**ALL ACCOUNTABILITY SHOULD BE DONE IN THE CONTEXT OF VOLUNTEER AND FAMILY AS THE DYNAMIC. FAMILY, SO WE WANT TO LOVE THEM ENOUGH TO WOUND THEM: VOLUNTEERS, WE UNDERSTAND THAT THEY HAVE A LEVEL OF INVOLVMENT IN THE CHARITY AND SO WE WANT TO ENSURE THEIR BEHAVIOUR ALIGNS WITH OUR CODE OF CONDUCT.**

**FOUNDED IN 2019, HOPE2FAMILIES IS A REGISTERED CHARITY THAT SEEKS TO PROVIDE PRACTICAL SUPPORT FOR THOSE WITH CANCER AND IN WIDER SUFFERING. OUR CHARITY CONTAINS WILDFIRE, WHICH ACTS AS THE YOUTH BRANCH OF THIS CHARITY.**

### **VOLUNTEER ACCOUNTABILITY THE ROLE**

**4 DO WHAT YOU CAN  
WHEN YOU CAN**

**5 LEAVE WHEN YOU  
WANT**

**6 KEEP THE PRIORITY  
THE PRIORITY**

**THE ROLE OF A VOLUNTEER IS AN ADDITIONAL SPACE THAT COMES WITH LITTLE BAGGAGE FOR PEOPLE TO STEWARD THEIR GIFTS AND ENGAGE IN SOMETHING THAT IS PRETTY UNIQUE. IT SHOULD NEVER DETRACT AWAY FROM THE PRIORITY WHICH IS THE LOCAL BODY, JOB, UNI ETC. ACCOUNTABLY WILL ENSURE THAT DOESBNT TAKE PLACE.**

FOUNDED IN 2019, HOPE2FAMILIES IS A REGISTERED CHARITY THAT SEEKS TO PROVIDE PRACTICAL SUPPORT FOR THOSE WITH CANCER AND IN WIDER SUFFERING. OUR CHARITY CONTAINS WILDFIRE, WHICH ACTS AS THE YOUTH BRANCH OF THIS CHARITY.

## VOLUNTEER ACCOUNTABILITY

**1** **RECOGNISE**

**2** **WEIGH UP**

**3** **RESPOND**

WE RECOGNISE THE AREA OF CONCERN, WE WEIGH IT UP, TAKING INTO CONSIDERATION CHARACTER, MOTIVE, ACTION AND EFFECT. RESPONSE WILL VARY, WILL BE DONE IN HOUSE AS FAMILY AND IN THE CONTEXT OF THEIR COMMITMENT AS A VOLUNTEER. AFTER THE RULE OF 3, OR IF THE CONCERN IS SEVERE, THE PERSON AND THE PERSONS LOCAL BODY WILL BE INFORMED.

**4**



FOUNDED IN 2019, HOPE2FAMILIES IS A REGISTERED CHARITY THAT SEEKS TO PROVIDE PRACTICAL SUPPORT FOR THOSE WITH CANCER AND IN WIDER SUFFERING. OUR CHARITY CONTAINS WILDFIRE, WHICH ACTS AS THE YOUTH BRANCH OF THIS CHARITY.

## VOLUNTEER ACCOUNTABILITY

1 SIN

2 CONSCIENCE

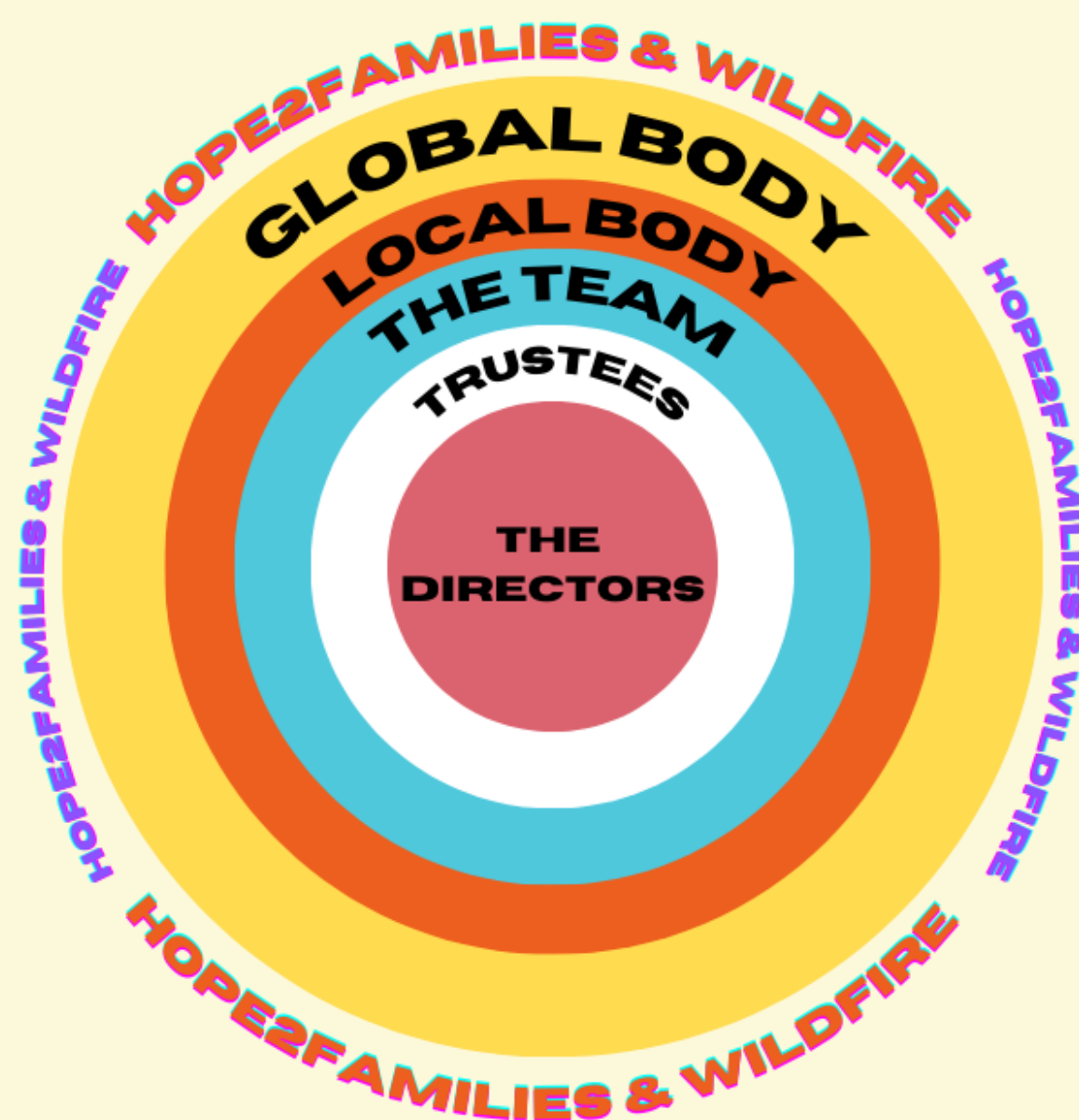
3 PREFERENCE

DETERMINE WHERE THE AREA OF CONCERN LANDS.

5

FOUNDED IN 2019, HOPE2FAMILIES IS A REGISTERED CHARITY THAT SEEKS TO PROVIDE PRACTICAL SUPPORT FOR THOSE WITH CANCER AND IN WIDER SUFFERING. OUR CHARITY CONTAINS WILDFIRE, WHICH ACTS AS THE YOUTH BRANCH OF THIS CHARITY.

**DEALING WITH CRITICISM  
AND DISAGREEMENT**



**WHERE DOES THE PERSON WITH THE  
DISAGREEMENT OR CRITICISM FIND  
THEMSELVES IN THE CIRCLE OF COMMUNITY**

**FOUNDED IN 2019, HOPE2FAMILIES IS A REGISTERED CHARITY THAT SEEKS TO PROVIDE PRACTICAL SUPPORT FOR THOSE WITH CANCER AND IN WIDER SUFFERING. OUR CHARITY CONTAINS WILDFIRE, WHICH ACTS AS THE YOUTH BRANCH OF THIS CHARITY.**

### **DEALING WITH CRITICISM AND DISAGREEMENT**

**1** **RECOGNISE**

**2** **WEIGH UP**

**3** **RESPOND**

**WHAT WE DO WITH THE CRITICISM OR DISAGREEMENT, WE DON'T INVALIDATE, NOR ARE WE DICTATED BY IT. BUT WE RECOGNISE IT, WEIGH IT UP AND THEN RESPOND.**

FOUNDED IN 2019, HOPE2FAMILIES IS A REGISTERED CHARITY THAT SEEKS TO PROVIDE PRACTICAL SUPPORT FOR THOSE WITH CANCER AND IN WIDER SUFFERING. OUR CHARITY CONTAINS WILDFIRE, WHICH ACTS AS THE YOUTH BRANCH OF THIS CHARITY.

## DEALING WITH CRITICISM AND DISAGREEMENT

**1** SIN

**2** CONSCIENCE

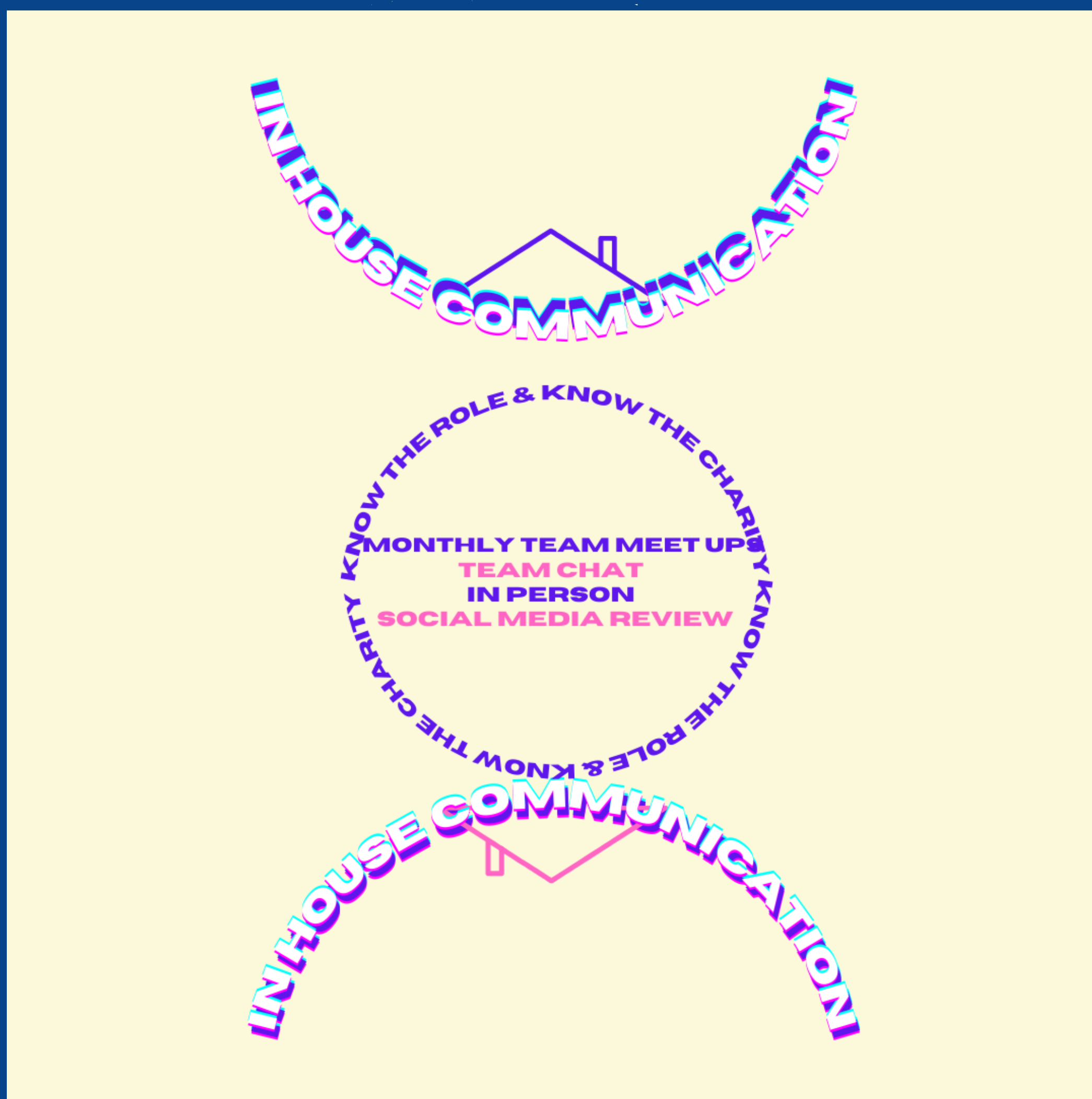
**3** PREFERENCE

WHAT WE DO WITH THE CRITICISM OR DISAGREEMENT, WE DON'T INVALIDATE, NOR ARE WE DICTATED BY IT. BUT WE RECOGNISE IT, WEIGH IT UP AND THEN RESPOND. IS IT BIBLICAL OR UNBIBLICAL? IS IT PERMISSABLE OR BENEFICIAL? IS IT THE INDIVIDUAL PERSON?

FOUNDED IN 2019, HOPE2FAMILIES IS A REGISTERED CHARITY THAT SEEKS TO PROVIDE PRACTICAL SUPPORT FOR THOSE WITH CANCER AND IN WIDER SUFFERING. OUR CHARITY CONTAINS WILDFIRE, WHICH ACTS AS THE YOUTH BRANCH OF THIS CHARITY.



FOUNDED IN 2019, HOPE2FAMILIES IS A REGISTERED CHARITY THAT SEEKS TO PROVIDE PRACTICAL SUPPORT FOR THOSE WITH CANCER AND IN WIDER SUFFERING. OUR CHARITY CONTAINS WILDFIRE, WHICH ACTS AS THE YOUTH BRANCH OF THIS CHARITY.





FOUNDED IN 2019, HOPE2FAMILIES IS A REGISTERED CHARITY THAT SEEKS TO PROVIDE PRACTICAL SUPPORT FOR THOSE WITH CANCER AND IN WIDER SUFFERING. OUR CHARITY CONTAINS WILDFIRE, WHICH ACTS AS THE YOUTH BRANCH OF THIS CHARITY.

## WHY WE DOING THIS??

1

### PERCEPTION

THE WAY IN WHICH SOMETHING IS REGARDED, UNDERSTOOD, OR INTERPRETED.

PERCEPTION IS NOT REALITY, THE PHARISEES PERCEPTION WAS JESUS' POWER CAME FROM THE DEVIL, WHEN IN REALITY, JESUS WAS GOD!

### REALITY

WE WANT TO COMMUNICATE CLEARLY AND TRANSPARENTLY WHAT WILDFIRE IS AND ISN'T. TO BRING CLARITY AND REALITY TO EXISTING PERCEPTIONS.

WHY PERCEIVE WHEN YOU CAN KNOW.

FOUNDED IN 2019, HOPE2FAMILIES IS A REGISTERED CHARITY THAT SEEKS TO PROVIDE PRACTICAL SUPPORT FOR THOSE WITH CANCER AND IN WIDER SUFFERING. OUR CHARITY CONTAINS WILDFIRE, WHICH ACTS AS THE YOUTH BRANCH OF THIS CHARITY.

## **PERCEPTION VS REALITY?**

**2**

**| OUR COMMUNICATION, IN HOUSE AND  
OUT OF HOUSE.**

**| OUR ACCOUNTABILITY EXPLAINED**

**| DEALING WITH DISAGREEMENT**

**| WHATS A VOLUNTEER?**

**| WHAT IS WILDFIRE?**

**| WHAT WILDFIRE ISN'T**

**| WHY WILDFIRE?**

**| HOW DOES WILDFIRE ACCOMPLISH  
WHY IT EXISTS?**

**| US**

**| YOU**

**| PERCEPTION AND REALITY**

FOUNDED IN 2019, HOPE2FAMILIES IS A REGISTERED CHARITY THAT SEEKS TO PROVIDE PRACTICAL SUPPORT FOR THOSE WITH CANCER AND IN WIDER SUFFERING. OUR CHARITY CONTAINS WILDFIRE, WHICH ACTS AS THE YOUTH BRANCH OF THIS CHARITY.

3

### **PERCEPTION**

**HOPE2FAMILIES IS A CHURCH?**

### **REALITY**

**HOPE2FAMILIES IS NOT A CHURCH**

### **PERCEPTION**

**THE LOCAL BODY IS WHAT MATTERS; HOPE2FAMILIES DISTRACTS AND DETRACTS AWAY FROM THE LOCAL BODY.**

### **REALITY**

**HOPE2FAMILIES FINDS ITSELF AMONG MILLIONS OF OTHER CHARITIES THAT EXIST OUTSIDE THE LOCAL BODY. OUR FOCUS IS TO BE A TOOL FOR THE LOCAL BODY, THE LOCAL BODY USES US TO HELP THEIR CHURCH. VOLUNTEERS, PEOPLE WHO FOLLOW OR THOSE INVOLVED IN HOPE2FAMILIES WILL KNOW THE IMPORTANCE OF LOCAL BODY PLUG IN. WE WANT TO HELP PEOPLE GET PLUGGED IN TO A LOCAL BODY WHERE INTIMATE DISCIPLESHIP CAN TAKE PLACE. WE WANT TO CREATE A NETWORK OF UNITY AMONG CHARITIES AND CHURCHES, THEY SHOULD NOT BE IN CONFLICT WITH ONE ANOTHER.**

FOUNDED IN 2019, HOPE2FAMILIES IS A REGISTERED CHARITY THAT SEEKS TO PROVIDE PRACTICAL SUPPORT FOR THOSE WITH CANCER AND IN WIDER SUFFERING. OUR CHARITY CONTAINS WILDFIRE, WHICH ACTS AS THE YOUTH BRANCH OF THIS CHARITY.

4

### **PERCEPTION**

**NO SAFEGUARDING OR CONCERN ABOUT PRACTICALITIES?**

### **REALITY**

**WE HAVE OVER 200 PLUS PAGES OF SAFEGUARDING, A MISSION STATEMENT, A CONSTITUTION, AN ACCOUNTANT, A LEGAL ADVISOR, TRUSTEES, DIRECTORS, VOLUNTEERS, TEAM PLANNING, TEAM CHAT, DATA PROTECTION, RECRUITMENT POLICY, INDUCTIONS, INCIDENT REPORT FORMS, PRAYER, ASKING FOR WISDOM, QUARTELY REVIEWS, MONTHLY PUBLIC REVIEWS, PUBLIC COMPANY PROFILE.**

### **PERCEPTION**

**ITS ALL DONE BY AND IS ABOUT ONE PERSON?**

### **REALITY**

**HOPE2FAMILIES HAS OVER 10 VOLUNTEERS, 10 TRUSTEES, 3 DIRECTORS, WILDFIRE HAS OVER 25 VOLUNTEERS. EVENTS REQUIRE AND HAVE BEEN DONE WITH A TEAM OF AT LEAST 12-15 PEOPLE. ONLINE CONTACT HAS INCLUDED 100S OF PEOPLE.**

FOUNDED IN 2019, HOPE2FAMILIES IS A REGISTERED CHARITY THAT SEEKS TO PROVIDE PRACTICAL SUPPORT FOR THOSE WITH CANCER AND IN WIDER SUFFERING. OUR CHARITY CONTAINS WILDFIRE, WHICH ACTS AS THE YOUTH BRANCH OF THIS CHARITY.

5

### PERCEPTION

SOCIAL MEDIA IS ROGUE AND RANDOM?

### REALITY

ONLINE CONTENT INCLUDES PODCASTS, BLOGS, MINI SERIES, EVENT PROMO, EVENT RECAP, SONGS COME FROM WITHIN THE TEAM. POSTS ARE PRESENTED TO THE DIRECTORS, TRUSTEES AND TEAM BEFORE UPLOADING AND HAVE BEEN TALKED ABOUT AT TEAM MEETINGS,

### PERCEPTION

EVENTS ARE ROGUE AND RANDOM?

### REALITY

TEAM PLANNING PROCEEDS EVENTS, EVENTS ARE COMMUNICATED TO DIRECTORS, TRUSTEES AND THE TEAM. TEAM PLANNING IS ONCE A MONTH.



FOUNDED IN 2019, HOPE2FAMILIES IS A REGISTERED CHARITY THAT SEEKS TO PROVIDE PRACTICAL SUPPORT FOR THOSE WITH CANCER AND IN WIDER SUFFERING. OUR CHARITY CONTAINS WILDFIRE, WHICH ACTS AS THE YOUTH BRANCH OF THIS CHARITY.

6

US

**EVERYTHING THAT EXISTS HAS PROBLEMS, HOPE2FAMILIES EXISTS AND SO HAS PROBLEMS.**

**WITH OUR ACCOUNTABILITY WE RECOGNISE OUR PROBLEMS AND COME UP WITH SOLUTIONS.**

**WE TRULY LOVE JESUS WITH OUR WHOLE HEART AND DESIRE TO SERVE HIM. THE EVIDENCE IS FOUND WITH THE HUNDREDS OF CHURCHES, CHARITIES AND PARACHURCH ORGANISATIONS. WE HAVE HEARD 10,000S OF STORIES OF PEOPLE WHO COME TO KNOW JESUS, HAVE GROWN CLOSER TO JESUS, HAVE BEEN PRACTICALLY HELPED, WE CONTINUE TO SERVE CHRIST AS HE CALLS US.**

**WE ARE CONSTANTLY PRAYNG, WE ARE CONSTANTLY PRAISING, WE WANT UNITY, TRUTH AND LOVE TO PREVAIL.**

**WE WANT TO CREATE SPACES FOR PEOPLE TO COME TO KNOW JESUS, TO BE BAPTISED AND THEN TO BE PLUGGED INTO A LOCAL BODY. WE WANT AND HAVE TO DO THIS WITH LOCAL BODIES, ELDERS, DEACONS, OTHER CHARITIES.**

**WE THINK BIBLICALLY ABOUT EVERYTHING.**



FOUNDED IN 2019, HOPE2FAMILIES IS A REGISTERED CHARITY THAT SEEKS TO PROVIDE PRACTICAL SUPPORT FOR THOSE WITH CANCER AND IN WIDER SUFFERING. OUR CHARITY CONTAINS WILDFIRE, WHICH ACTS AS THE YOUTH BRANCH OF THIS CHARITY.

7

**YOU**

**SEE FOR YOURSELF, COME TO OUR EVENTS, SPEAK TO THE TRUSTEES, THE DIRECTORS AND THE FOUNDERS IN PERSON.**

**KNOW CHARACTER, KNOW MOTIVES, KNOW ACTIONS AND THEIR EFFECTS BEFORE ESTABLISHING A PERCEPTION**

**DON'T SETTLE FOR PERCEPTION BUT GO WITH REALITY.**

**ASSUME THE BEST, PRESERVE, PROTECT, HOPE AND REJOICE, IN THIS WAY WE LOVE ONE ANOTHER.**

**EXTEND GRACE, PATIENCE, MERCY.**

**PRESERVE UNITY, SEEK TRUTH AND DO ALL THIS IN LOVE.**

**REMEMBER FAMILY AND THAT JESUS CALLS US TO LOVE ONE ANOTHER AS HE LOVE US.**

**DISENGAGE FROM WILDFIRE IF YOU FEEL LIKE IT DEFILES YOUR CONSCIENCE, IS UNEDIFYING FOR CHRIST AND DOESN'T HELP YOU.**

FOUNDED IN 2019, HOPE2FAMILIES IS A REGISTERED CHARITY THAT SEEKS TO PROVIDE PRACTICAL SUPPORT FOR THOSE WITH CANCER AND IN WIDER SUFFERING. OUR CHARITY CONTAINS WILDFIRE, WHICH ACTS AS THE YOUTH BRANCH OF THIS CHARITY.

**8**

**DO WE WANT GODS  
KINGDOM ADVANCED,  
OR DO WE WANT GODS  
KINGDOM ADVANCED  
IN US?**

**A WIN IN THE KINGDOM  
IS A WIN FOR THE BODY.**

**WE HAVE TO LEARN TO  
ACKNOWLEDGE AND  
CELEBRATE WHAT IS A  
WORK OF CHRIST.**

**IF YOU HAVE A  
PROBLEM RING US, IF  
YOU DON'T HAVE OUR  
NUMBER YOU DON'T  
KNOW US WELL  
ENOUGH TO HAVE A  
PROBLEM.**

**WITH EVERY PROBLEM  
YOU SEE, SEE TWO MORE  
SOLUTIONS.**

**WILDFIRE SEEKS TO IGNITE MEN AND WOMEN OF GOD INTO A DEEPER DISCIPLESHIP WITH CHRIST. DISCIPLESHIP MEANING ENCOUNTER WITH JESUS, BAPTISM AND LOCAL BODY PLUG IN. WILDFIRE ACTS AS THE DISCIPLESHIP BRANCH OF HOPE2FAMILIES.**



**ADDRESSING PERCEPTION  
SHOWING THE REALITY  
WHAT WILDFIRE IS AND ISN'T COMMUNICATING CLEARLY  
PROVIDING CLARITY BEHIND THE SCENES**

WILDFIRE SEEKS TO IGNITE MEN AND WOMEN OF GOD INTO A DEEPER DISCIPLESHIP WITH CHRIST. DISCIPLESHIP MEANING ENCOUNTER WITH JESUS, BAPTISM AND LOCAL BODY PLUG IN. WILDFIRE ACTS AS THE DISCIPLESHIP BRANCH OF HOPE2FAMILIES.

**VOLUNTEER ACCOUNTABILITY**



**APPROACH NECESSARY AREAS OF ACCOUNTABILITY DEPENDING ON THE NATURE OR SEVERITY OF THE OFFENCE.**

**WILDFIRE SEEKS TO IGNITE MEN AND WOMEN OF GOD INTO A DEEPER DISCIPLESHIP WITH CHRIST. DISCIPLESHIP MEANING ENCOUNTER WITH JESUS, BAPTISM AND LOCAL BODY PLUG IN. WILDFIRE ACTS AS THE DISCIPLESHIP BRANCH OF HOPE2FAMILIES.**

### **VOLUNTEER ACCOUNTABILITY THE ROLE**

**1**  
**LOW RESPONSIBILITY**

**2**  
**LOW EXPECTATION**

**3**  
**LOW COMMITMENT**

**ALL ACCOUNTABILITY SHOULD BE DONE IN THE CONTEXT OF VOLUNTEER AND FAMILY AS THE DYNAMIC. FAMILY, SO WE WANT TO LOVE THEM ENOUGH TO WOUND THEM: VOLUNTEERS, WE UNDERSTAND THAT THEY HAVE A LEVEL OF INVOLVMENT IN THE CHARITY AND SO WE WANT TO ENSURE THEIR BEHAVIOUR ALIGNS WITH OUR CODE OF CONDUCT.**

**WILDFIRE SEEKS TO IGNITE MEN AND WOMEN OF GOD INTO A DEEPER DISCIPLESHIP WITH CHRIST. DISCIPLESHIP MEANING ENCOUNTER WITH JESUS, BAPTISM AND LOCAL BODY PLUG IN. WILDFIRE ACTS AS THE DISCIPLESHIP BRANCH OF HOPE2FAMILIES.**

### **VOLUNTEER ACCOUNTABILITY THE ROLE**

**4 DO WHAT YOU CAN  
WHEN YOU CAN**

**5 LEAVE WHEN YOU  
WANT**

**6 KEEP THE PRIORITY  
THE PRIORITY**

**THE ROLE OF A VOLUNTEER IS AN ADDITIONAL SPACE THAT COMES WITH LITTLE BAGGAGE FOR PEOPLE TO STEWARD THEIR GIFTS AND ENGAGE IN SOMETHING THAT IS PRETTY UNIQUE. IT SHOULD NEVER DETRACT AWAY FROM THE PRIORITY WHICH IS THE LOCAL BODY, JOB, UNI ETC. ACCOUTABLY WILL ENSURE THAT DOESBNT TAKE PLACE.**



WILDFIRE SEEKS TO IGNITE MEN AND WOMEN OF GOD INTO A DEEPER DISCIPLESHIP WITH CHRIST. DISCIPLESHIP MEANING ENCOUNTER WITH JESUS, BAPTISM AND LOCAL BODY PLUG IN. WILDFIRE ACTS AS THE DISCIPLESHIP BRANCH OF HOPE2FAMILIES.

## VOLUNTEER ACCOUNTABILITY

**1** **RECOGNISE**

**2** **WEIGH UP**

**3** **RESPOND**

WE RECOGNISE THE AREA OF CONCERN, WE WEIGH IT UP, TAKING INTO CONSIDERATION CHARACTER, MOTIVE, ACTION AND EFFECT. RESPONSE WILL VARY, WILL BE DONE IN HOUSE AS FAMILY AND IN THE CONTEXT OF THEIR COMMITMENT AS A VOLUNTEER. AFTER THE RULE OF 3, OR IF THE CONCERN IS SEVERE, THE PERSON AND THE PERSONS LOCAL BODY WILL BE INFORMED.

**4**

**WILDFIRE SEEKS TO IGNITE MEN AND WOMEN OF GOD INTO A DEEPER DISCIPLESHIP WITH CHRIST. DISCIPLESHIP MEANING ENCOUNTER WITH JESUS, BAPTISM AND LOCAL BODY PLUG IN. WILDFIRE ACTS AS THE DISCIPLESHIP BRANCH OF HOPE2FAMILIES.**

### **VOLUNTEER ACCOUNTABILITY**

**1 SIN**

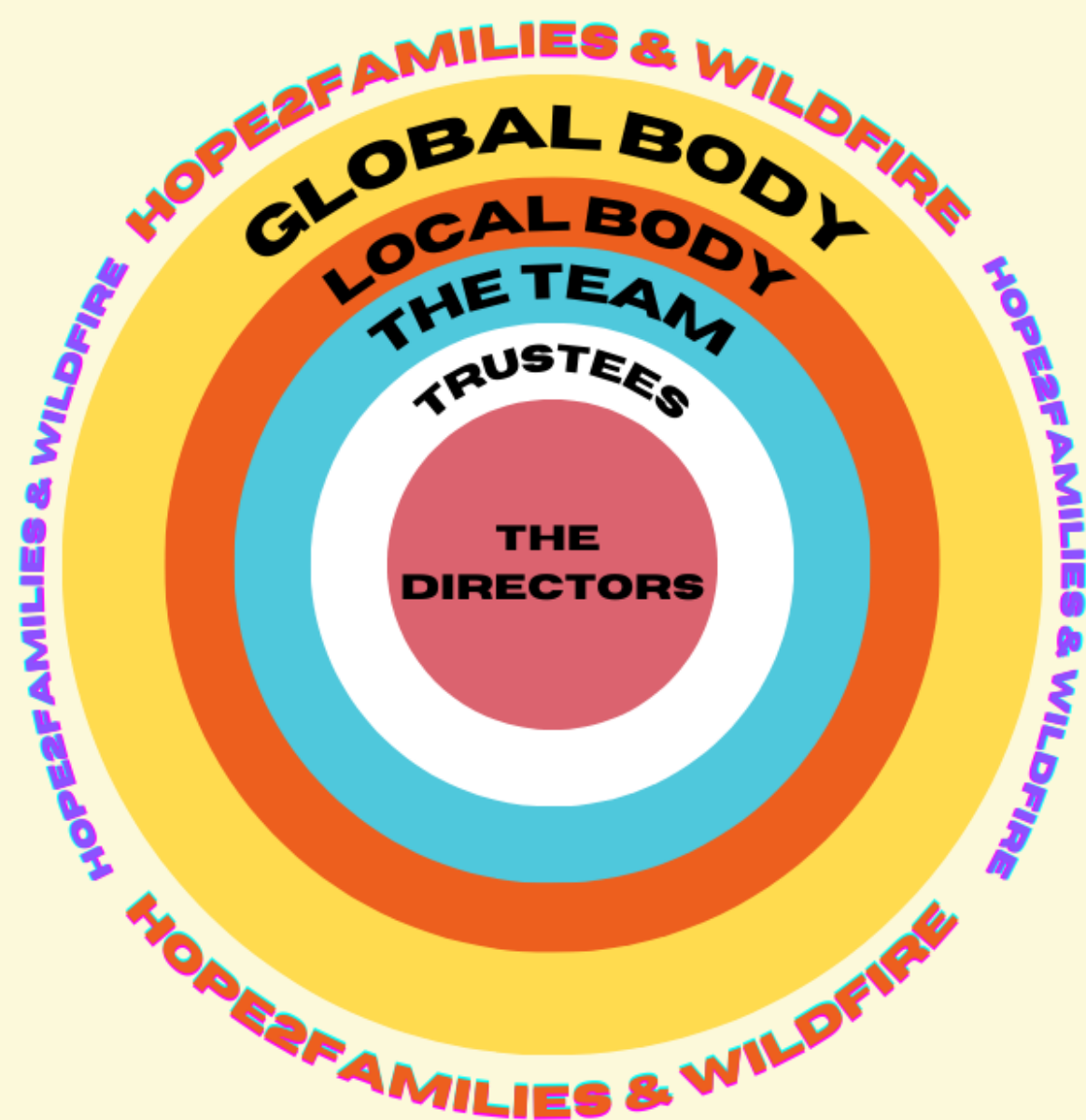
**2 CONSCIENCE**

**3 PREFERENCE**

**DETERMINE WHERE THE AREA OF CONCERN LANDS.**

WILDFIRE SEEKS TO IGNITE MEN AND WOMEN OF GOD INTO A DEEPER DISCIPLESHIP WITH CHRIST. DISCIPLESHIP MEANING ENCOUNTER WITH JESUS, BAPTISM AND LOCAL BODY PLUG IN. WILDFIRE ACTS AS THE DISCIPLESHIP BRANCH OF HOPE2FAMILIES.

**DEALING WITH CRITICISM  
AND DISAGREEMENT**



**WHERE DOES THE PERSON WITH THE  
DISAGREEMENT OR CRITICISM FIND  
THEMSELVES IN THE CIRCLE OF COMMUNITY**

**WILDFIRE SEEKS TO IGNITE MEN AND WOMEN OF GOD INTO A DEEPER DISCIPLESHIP WITH CHRIST. DISCIPLESHIP MEANING ENCOUNTER WITH JESUS, BAPTISM AND LOCAL BODY PLUG IN. WILDFIRE ACTS AS THE DISCIPLESHIP BRANCH OF HOPE2FAMILIES.**

### **DEALING WITH CRITICISM AND DISAGREEMENT**

**1** **RECOGNISE**

**2** **WEIGH UP**

**3** **RESPOND**

**WHAT WE DO WITH THE CRITICISM OR DISAGREEMENT, WE DON'T INVALIDATE, NOR ARE WE DICTATED BY IT. BUT WE RECOGNISE IT, WEIGH IT UP AND THEN RESPOND.**

**WILDFIRE SEEKS TO IGNITE MEN AND WOMEN OF GOD INTO A DEEPER DISCIPLESHIP WITH CHRIST. DISCIPLESHIP MEANING ENCOUNTER WITH JESUS, BAPTISM AND LOCAL BODY PLUG IN. WILDFIRE ACTS AS THE DISCIPLESHIP BRANCH OF HOPE2FAMILIES.**

### **DEALING WITH CRITICISM AND DISAGREEMENT**

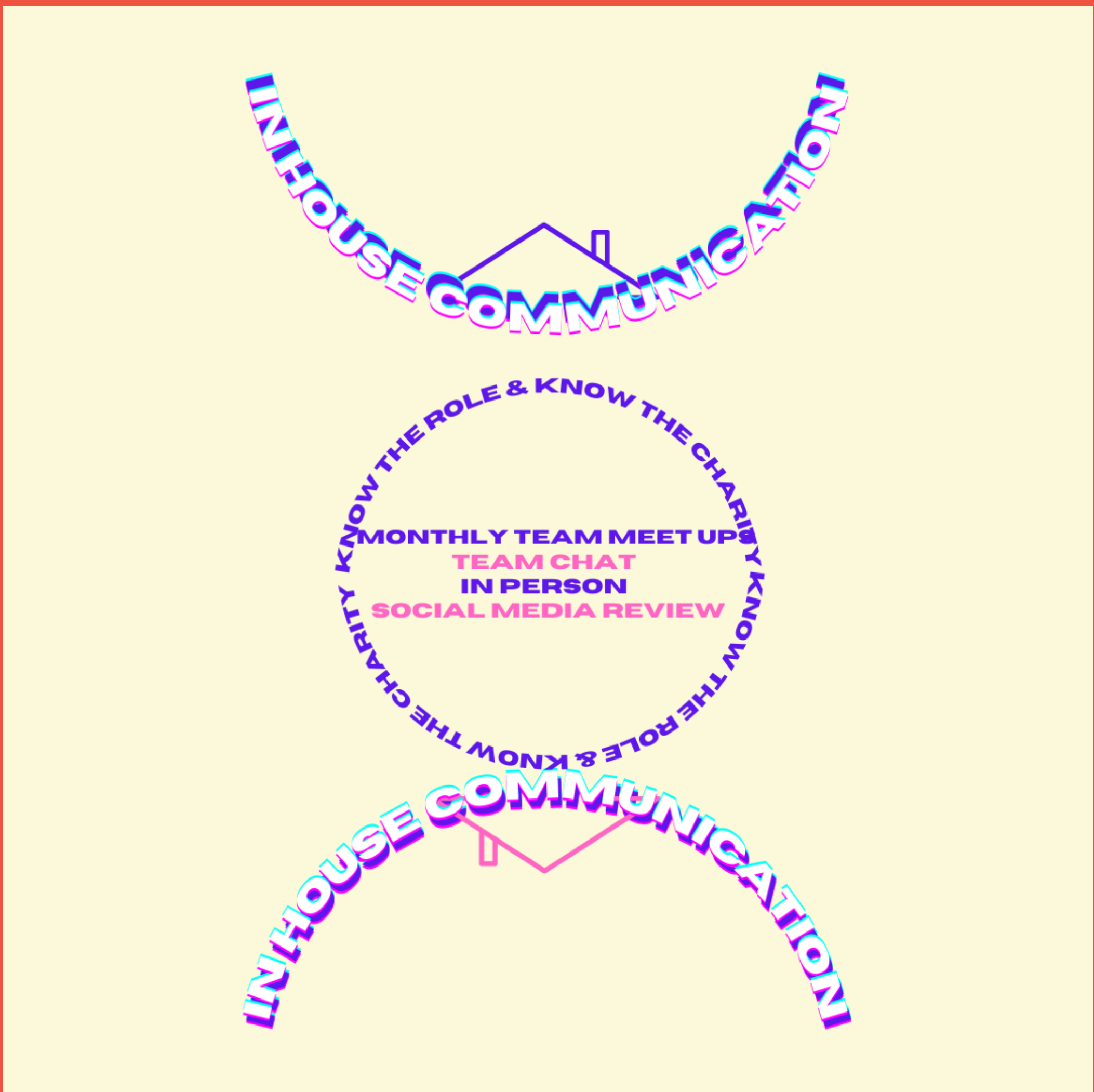
**1 SIN**

**2 CONSCIENCE**

**3 PREFERENCE**

**WHAT WE DO WITH THE CRITICISM OR DISAGREEMENT, WE DON'T INVALIDATE, NOR ARE WE DICTATED BY IT. BUT WE RECOGNISE IT, WEIGH IT UP AND THEN RESPOND. IS IT BIBLICAL OR UNBIBLICAL? IS IT PERMISSABLE OR BENEFICIAL? IS IT THE INDIVIDUAL PERSON?**

WILDFIRE SEEKS TO IGNITE MEN AND WOMEN OF GOD INTO A DEEPER DISCIPLESHIP WITH CHRIST. DISCIPLESHIP MEANING ENCOUNTER WITH JESUS, BAPTISM AND LOCAL BODY PLUG IN. WILDFIRE ACTS AS THE DISCIPLESHIP BRANCH OF HOPE2FAMILIES.





WILDFIRE SEEKS TO IGNITE MEN AND WOMEN OF GOD INTO A DEEPER DISCIPLESHIP WITH CHRIST. DISCIPLESHIP MEANING ENCOUNTER WITH JESUS, BAPTISM AND LOCAL BODY PLUG IN. WILDFIRE ACTS AS THE DISCIPLESHIP BRANCH OF HOPE2FAMILIES.



WILDFIRE SEEKS TO IGNITE MEN AND WOMEN OF GOD INTO A DEEPER DISCIPLESHIP WITH CHRIST. DISCIPLESHIP MEANING ENCOUNTER WITH JESUS, BAPTISM AND LOCAL BODY PLUG IN. WILDFIRE ACTS AS THE DISCIPLESHIP BRANCH OF HOPE2FAMILIES.

## WHY WE DOING THIS??

### 1

#### PERCEPTION

THE WAY IN WHICH SOMETHING IS REGARDED, UNDERSTOOD, OR INTERPRETED.

PERCEPTION IS NOT REALITY, THE PHARISEES PERCEPTION WAS JESUS' POWER CAME FROM THE DEVIL, WHEN IN REALITY, JESUS WAS GOD!

#### REALITY

WE WANT TO COMMUNICATE CLEARLY AND TRANSPARENTLY WHAT WILDFIRE IS AND ISN'T. TO BRING CLARITY AND REALITY TO EXISTING PERCEPTIONS.

WHY PERCEIVE WHEN YOU CAN KNOW.

WILDFIRE SEEKS TO IGNITE MEN AND WOMEN OF GOD INTO A DEEPER DISCIPLESHIP WITH CHRIST. DISCIPLESHIP MEANING ENCOUNTER WITH JESUS, BAPTISM AND LOCAL BODY PLUG IN. WILDFIRE ACTS AS THE DISCIPLESHIP BRANCH OF HOPE2FAMILIES.

## **PERCEPTION VS REALITY?**

**2**

**| OUR COMMUNICATION, IN HOUSE AND  
OUT OF HOUSE.**

**| OUR ACCOUNTABILITY EXPLAINED**

**| DEALING WITH DISAGREEMENT**

**| WHATS A VOLUNTEER?**

**| WHAT IS WILDFIRE?**

**| WHAT WILDFIRE ISN'T**

**| WHY WILDFIRE?**

**| HOW DOES WILDFIRE ACCOMPLISH  
WHY IT EXISTS?**

**| US**

**| YOU**

**| PERCEPTION AND REALITY**

WILDFIRE SEEKS TO IGNITE MEN AND WOMEN OF GOD INTO A DEEPER DISCIPLESHIP WITH CHRIST. DISCIPLESHIP MEANING ENCOUNTER WITH JESUS, BAPTISM AND LOCAL BODY PLUG IN. WILDFIRE ACTS AS THE DISCIPLESHIP BRANCH OF HOPE2FAMILIES.

3

**PERCEPTION**

WILDFIRE IS A CHURCH?

**REALITY**

WILDFIRE IS **NOT** A CHURCH

**PERCEPTION**

THE LOCAL BODY IS WHAT MATTERS; WILDFIRE DISTRACTS AND DETRACTS AWAY FROM THE LOCAL BODY.

**REALITY**

WILDFIRE FINDS ITSELF AMONG MILLIONS OF OTHER CHARITIES THAT EXIST OUTSIDE THE LOCAL BODY. OUR FOCUS IS TO BE A **TOOL** FOR THE **LOCAL BODY**, THE LOCAL BODY USES US TO HELP THEIR CHURCH. VOLUNTEERS, PEOPLE WHO FOLLOW OR THOSE INVOLVED IN WILDFIRE WILL KNOW **THE IMPORTANCE OF LOCAL BODY PLUG IN**. WE WANT TO **HELP PEOPLE GET PLUGGED IN TO A LOCAL BODY** WHERE INTIMATE DISCIPLESHIP CAN TAKE PLACE. WE WANT TO **CREATE A NETWORK OF UNITY AMONG CHARITIES AND CHURCHES**, THEY SHOULD NOT BE IN CONFLICT WITH ONE ANOTHER.

WILDFIRE SEEKS TO IGNITE MEN AND WOMEN OF GOD INTO A DEEPER DISCIPLESHIP WITH CHRIST. DISCIPLESHIP MEANING ENCOUNTER WITH JESUS, BAPTISM AND LOCAL BODY PLUG IN. WILDFIRE ACTS AS THE DISCIPLESHIP BRANCH OF HOPE2FAMILIES.

4

### **PERCEPTION**

**NO SAFEGUARDING OR CONCERN ABOUT PRACTICALITIES?**

### **REALITY**

**WE HAVE OVER 200 PLUS PAGES OF SAFEGUARDING, A MISSION STATEMENT, A CONSTITUTION, AN ACCOUNTANT, A LEGAL ADVISOR, TRUSTEES, DIRECTORS, VOLUNTEERS, TEAM PLANNING, TEAM CHAT, DATA PROTECTION, RECRUITMENT POLICY, INDUCTIONS, INCIDENT REPORT FORMS, PRAYER, ASKING FOR WISDOM, QUARTELY REVIEWS, MONTHLY PUBLIC REVIEWS, PUBLIC COMPANY PROFILE.**

### **PERCEPTION**

**ITS ALL DONE BY AND IS ABOUT ONE PERSON?**

### **REALITY**

**WILDFIRE HAS OVER 25 VOLUNTEERS, 10 TRUSTEES, 3 DIRECTORS, HOPE2FAMILIES HAS OVER 10 VOLUNTEERS. EVENTS REQUIRE AND HAVE BEEN DONE WITH A TEAM OF AT LEAST 12-15 PEOPLE. ONLINE CONTACT HAS INCLUDED 100S OF PEOPLE.**

WILDFIRE SEEKS TO IGNITE MEN AND WOMEN OF GOD INTO A DEEPER DISCIPLESHIP WITH CHRIST. DISCIPLESHIP MEANING ENCOUNTER WITH JESUS, BAPTISM AND LOCAL BODY PLUG IN. WILDFIRE ACTS AS THE DISCIPLESHIP BRANCH OF HOPE2FAMILIES.

5

### PERCEPTION

SOCIAL MEDIA IS ROGUE AND RANDOM?

### REALITY

ONLINE CONTENT INCLUDES PODCASTS, BLOGS, MINI SERIES, EVENT PROMO, EVENT RECAP, SONGS COME FROM WITHIN THE TEAM. POSTS ARE PRESENTED TO THE DIRECTORS, TRUSTEES AND TEAM BEFORE UPLOADING AND HAVE BEEN TALKED ABOUT AT TEAM MEETINGS,

### PERCEPTION

EVENTS ARE ROGUE AND RANDOM?

### REALITY

TEAM PLANNING PROCEEDS EVENTS, EVENTS ARE COMMUNICATED TO DIRECTORS, TRUSTEES AND THE TEAM. TEAM PLANNING IS ONCE A MONTH.



WILDFIRE SEEKS TO IGNITE MEN AND WOMEN OF GOD INTO A DEEPER DISCIPLESHIP WITH CHRIST. DISCIPLESHIP MEANING ENCOUNTER WITH JESUS, BAPTISM AND LOCAL BODY PLUG IN. WILDFIRE ACTS AS THE DISCIPLESHIP BRANCH OF HOPE2FAMILIES.

**6**

**US**

**EVERYTHING THAT EXISTS HAS PROBLEMS, WILDFIRE EXISTS AND SO HAS PROBLEMS.**

**WITH OUR ACCOUNTABILITY WE RECOGNISE OUR PROBLEMS AND COME UP WITH SOLUTIONS.**

**WE TRULY LOVE JESUS WITH OUR WHOLE HEART AND DESIRE TO SERVE HIM. THE EVIDENCE IS FOUND WITH THE HUNDREDS OF CHURCHES, CHARITIES AND PARACHURCH ORGANISATIONS. WE HAVE HEARD 10,000S OF STORIES OF PEOPLE WHO COME TO KNOW JESUS, HAVE GROWN CLOSER TO JESUS, HAVE BEEN PRACTICALLY HELPED, WE CONTINUE TO SERVE CHRIST AS HE CALLS US.**

**WE ARE CONSTANTLY PRAYNG, WE ARE CONSTANTLY PRAISING, WE WANT UNITY, TRUTH AND LOVE TO PREVAIL.**

**WE WANT TO CREATE SPACES FOR PEOPLE TO COME TO KNOW JESUS, TO BE BAPTISED AND THEN TO BE PLUGGED INTO A LOCAL BODY. WE WANT AND HAVE TO DO THIS WITH LOCAL BODIES, ELDERS, DEACONS, OTHER CHARITIES.**

**WE THINK BIBLICALLY ABOUT EVERYTHING.**

WILDFIRE SEEKS TO IGNITE MEN AND WOMEN OF GOD INTO A DEEPER DISCIPLESHIP WITH CHRIST. DISCIPLESHIP MEANING ENCOUNTER WITH JESUS, BAPTISM AND LOCAL BODY PLUG IN. WILDFIRE ACTS AS THE DISCIPLESHIP BRANCH OF HOPE2FAMILIES.

**7**

**YOU**

**SEE FOR YOURSELF, COME TO OUR EVENTS, SPEAK TO THE TRUSTEES, THE DIRECTORS AND THE FOUNDERS IN PERSON.**

**KNOW CHARACTER, KNOW MOTIVES, KNOW ACTIONS AND THEIR EFFECTS BEFORE ESTABLISHING A PERCEPTION**

**DON'T SETTLE FOR PERCEPTION BUT GO WITH REALITY.**

**ASSUME THE BEST, PRESERVE, PROTECT, HOPE AND REJOICE, IN THIS WAY WE LOVE ONE ANOTHER.**

**EXTEND GRACE, PATIENCE, MERCY.**

**PRESERVE UNITY, SEEK TRUTH AND DO ALL THIS IN LOVE.**

**REMEMBER FAMILY AND THAT JESUS CALLS US TO LOVE ONE ANOTHER AS HE LOVE US.**

**DISENGAGE FROM WILDFIRE IF YOU FEEL LIKE IT DEFILES YOUR CONSCIENCE, IS UNEDIFYING FOR CHRIST AND DOESN'T HELP YOU.**

**WILDFIRE SEEKS TO IGNITE MEN AND WOMEN OF GOD INTO A DEEPER DISCIPLESHIP WITH CHRIST. DISCIPLESHIP MEANING ENCOUNTER WITH JESUS, BAPTISM AND LOCAL BODY PLUG IN. WILDFIRE ACTS AS THE DISCIPLESHIP BRANCH OF HOPE2FAMILIES.**

**8**

**DO WE WANT GODS KINGDOM ADVANCED, OR DO WE WANT GODS KINGDOM ADVANCED IN US?**

**A WIN IN THE KINGDOM IS A WIN FOR THE BODY.**

**WE HAVE TO LEARN TO ACKNOWLEDGE AND CELEBRATE WHAT IS A WORK OF CHRIST.**

**IF YOU HAVE A PROBLEM RING US, IF YOU DON'T HAVE OUR NUMBER YOU DON'T KNOW US WELL ENOUGH TO HAVE A PROBLEM.**

**WITH EVERY PROBLEM YOU SEE, SEE TWO MORE SOLUTIONS.**

FOUNDED IN 2019, HOPE2FAMILIES IS A REGISTERED CHARITY THAT SEEKS TO PROVIDE PRACTICAL SUPPORT FOR THOSE WITH CANCER AND IN WIDER SUFFERING. OUR CHARITY CONTAINS WILDFIRE, WHICH ACTS AS THE YOUTH BRANCH OF THIS CHARITY.

## ONLINE CONTENT

### **HOPE2FAMILIES ONLINE CONTENT**

1

#### **EVENT PROMO**

**THIS INCLUDES EVENT TRAILERS AND PROMOTIONAL MATERIAL FOR THE EVENTS DECIDED BY THE TEAM.**

**THIS INCLUDES HIGHLIGHTS FROM THE EVENTS THAT WE PUT ON.**

**THIS WILL INCLUDE SOCIAL MEDIA, AND WEBSITES.**

#### **3 BIG EVENTS EACH YEAR**

**CHRISTMAS - HOPE2FAMILIES DINNER  
EASTER - CONFERENCE  
SUMMER - TENT MISSION**

**FOUNDED IN 2019, HOPE2FAMILIES IS A REGISTERED CHARITY THAT SEEKS TO PROVIDE PRACTICAL SUPPORT FOR THOSE WITH CANCER AND IN WIDER SUFFERING. OUR CHARITY CONTAINS WILDFIRE, WHICH ACTS AS THE YOUTH BRANCH OF THIS CHARITY.**

## **HOPE2FAMILIES ONLINE CONTENT**

**2**

**JOURNEY IN HOPE INTERVIEWS**

**PODCASTS ARE RELEASED EVERY FRIDAY.**

**INTERVIEWS WITH PEOPLE WHO HAVE OVERCOME DIFFICULTY AND ADVERSITY. THEIR STORY AND JOURNEY IN HOPE.**



FOUNDED IN 2019, HOPE2FAMILIES IS A REGISTERED CHARITY THAT SEEKS TO PROVIDE PRACTICAL SUPPORT FOR THOSE WITH CANCER AND IN WIDER SUFFERING. OUR CHARITY CONTAINS WILDFIRE, WHICH ACTS AS THE YOUTH BRANCH OF THIS CHARITY.

## **HOPE2FAMILIES ONLINE CONTENT**

**3**

### **MINI SERIES BIBLICAL FAMILIES**

**THIS SERIES LOOKS AT FAMILIES IN THE BIBLE AND THE MORALISTIC LESSONS WE CAN LEARN FROM THEM.**

#### **PURPOSE**

**HELP EDUCATE, TEACH, REBUKE, CORRECT AND TRAIN FAMILIES.**

#### **ACCOUNTABILITY**

**LIKE ALL OUR CONTENT, THE VARIOUS CIRCLES OF ACCOUNTABILITY WILL BE INFORMED AND THIR PRIOR TO POSTING THE VARIOUS ACCOUTABILITY WILL SEE WHAT THE POST AND DESCRIPTION WILL BE.**



FOUNDED IN 2019, HOPE2FAMILIES IS A REGISTERED CHARITY THAT SEEKS TO PROVIDE PRACTICAL SUPPORT FOR THOSE WITH CANCER AND IN WIDER SUFFERING. OUR CHARITY CONTAINS WILDFIRE, WHICH ACTS AS THE YOUTH BRANCH OF THIS CHARITY.

## **HOPE2FAMILIES ONLINE CONTENT**

**4**

### **MINI SERIES HOPE STREET**

**WE TAKE TO THE STREET CONNECTED  
TO THE HOPE2FAMILIES CENTRE  
TELLING PEOPLE, SHOWING PEOPLE  
AND GIVING PEOPLE HOPE.**

### **PURPOSE**

**TO SHOW THAT FOLLOWERS OF CHRIST  
CARE AND ACTUALLY HAVE A HOPE  
THAT PEOPLE DON'T.**

### **ACCOUNTABILITY**

**LIKE ALL OUR CONTENT, THE VARIOUS  
CIRCLES OF ACCOUNTABILITY WILL BE  
INFORMED AND IHR PRIOR TO POSTING  
THE VARIOUS ACCOUTABILITY WILL SEE  
WHAT THE POST AND DESCRIPTION  
WILL BE.**

FOUNDED IN 2019, HOPE2FAMILIES IS A REGISTERED CHARITY THAT SEEKS TO PROVIDE PRACTICAL SUPPORT FOR THOSE WITH CANCER AND IN WIDER SUFFERING. OUR CHARITY CONTAINS WILDFIRE, WHICH ACTS AS THE YOUTH BRANCH OF THIS CHARITY.

## **HOPE2FAMILIES ONLINE CONTENT**

**5**

### **MINI SERIES HOPE IN JESUS**

**THIS SERIES SEES US EXPLORE OUR HOPELESSNESS AND THE HOPE FOUND IN JESUS CHRIST.**

#### **PURPOSE**

**TO HIGHLIGHT THE INCREDIBLE HOPE THAT WE POSSESS AND EXHORTING US TO A LIFE THAT REFLECTS THAT HOPE.**

#### **ACCOUNTABILITY**

**LIKE ALL OUR CONTENT, THE VARIOUS CIRCLES OF ACCOUNTABILITY WILL BE INFORMED AND THIR PRIOR TO POSTING THE VARIOUS ACCOUTABILITY WILL SEE WHAT THE POST AND DESCRIPTION WILL BE.**

FOUNDED IN 2019, HOPE2FAMILIES IS A REGISTERED CHARITY THAT SEEKS TO PROVIDE PRACTICAL SUPPORT FOR THOSE WITH CANCER AND IN WIDER SUFFERING. OUR CHARITY CONTAINS WILDFIRE, WHICH ACTS AS THE YOUTH BRANCH OF THIS CHARITY.

## **HOPE2FAMILIES ONLINE CONTENT**

**6**

### **MINI SERIES HOPE RETREAT**

**A TIME OF RETREAT FOR PEOPLE TO  
ALIGN THEMSELVES WITH THE HOPE  
THEY HAVE.**

#### **PURPOSE**

**TO SHOW HOPE INDIVIDUALLY, HOPE IN  
COMMUNITY, HOPE IN THE NOW AND  
NOT YET BECAUSE OF JESUS.**

#### **ACCOUNTABILITY**

**LIKE ALL OUR CONTENT, THE VARIOUS  
CIRCLES OF ACCOUNTABILITY WILL BE  
INFORMED AND THIR PRIOR TO POSTING  
THE VARIOUS ACCOUTABILITY WILL SEE  
WHAT THE POST AND DESCRIPTION  
WILL BE.**

FOUNDED IN 2019, HOPE2FAMILIES IS A REGISTERED CHARITY THAT SEEKS TO PROVIDE PRACTICAL SUPPORT FOR THOSE WITH CANCER AND IN WIDER SUFFERING. OUR CHARITY CONTAINS WILDFIRE, WHICH ACTS AS THE YOUTH BRANCH OF THIS CHARITY.

## **HOPE2FAMILIES ONLINE CONTENT**

**7**

### **MINI SERIES HOPE 2 WHAT?**

**POSTS, VIDEOS AND Q/AS EXPLAINING  
THE CHARITY.**

#### **PURPOSE**

**PROVIDE CLARITY AND TACKLE THE  
MISPERCEPTIONS THAT MAY EXIST.**

#### **ACCOUNTABILITY**

**LIKE ALL OUR CONTENT, THE VARIOUS  
CIRCLES OF ACCOUNTABILITY WILL BE  
INFORMED AND IHR PRIOR TO POSTING  
THE VARIOUS ACCOUTABILITY WILL SEE  
WHAT THE POST AND DESCRIPTION  
WILL BE.**

WILDFIRE SEEKS TO IGNITE MEN AND WOMEN OF GOD INTO A DEEPER DISCIPLESHIP WITH CHRIST. DISCIPLESHIP MEANING ENCOUNTER WITH JESUS, BAPTISM AND LOCAL BODY PLUG IN. WILDFIRE ACTS AS THE DISCIPLESHIP BRANCH OF HOPE2FAMILIES.

## ONLINE CONTENT

### **WILDFIRE ONLINE CONTENT**

1

#### **EVENT PROMO**

**THIS INCLUDES EVENT TRAILERS AND PROMOTIONAL MATERIAL FOR THE EVENTS DECIDED BY THE TEAM.**

**THIS INCLUDES HIGHLIGHTS FROM THE EVENTS THAT WE PUT ON.**

**THIS WILL INCLUDE SOCIAL MEDIA, AND WEBSITES.**

#### **BLOGS**

**BLOGS ARE RELEASED ON MONDAYS VIA THE WEBSITE AND SOCIAL MEDIA.**

**THE MAJORITY OF BLOGS ARE DONE BY THE TEAM, BUT SOME BLOGS WILL BE WRITTEN BY OTHER FOLLOWERS OF CHRIST.**

**THESE BLOGS WILL BE VETTED BY A DIRECTOR, TRUSTEE, TEAM MEMBER.**



WILDFIRE SEEKS TO IGNITE MEN AND WOMEN OF GOD INTO A DEEPER DISCIPLESHIP WITH CHRIST. DISCIPLESHIP MEANING ENCOUNTER WITH JESUS, BAPTISM AND LOCAL BODY PLUG IN. WILDFIRE ACTS AS THE DISCIPLESHIP BRANCH OF HOPE2FAMILIES.

## **WILDFIRE ONLINE CONTENT**

**2**

### **PODCASTS**

**PODCASTS ARE RELEASED EVERY FRIDAY.**

**PODCASTS ARE MADE UP OF GUESTS, INDIVIDUAL PODCASTS AND PODCASTS DONE BY THE TEAM.**

**WE ALTERNATE BETWEEN BIBLE TOPICS AND BIBLE BOOKS.**

**PROVISIONAL PODCASTS, DATES AND GUESTS ARE LAID OUT TO THE VARIOUS CIRCLES OF ACCOUNTABILITY.**



WILDFIRE SEEKS TO IGNITE MEN AND WOMEN OF GOD INTO A DEEPER DISCIPLESHIP WITH CHRIST. DISCIPLESHIP MEANING ENCOUNTER WITH JESUS, BAPTISM AND LOCAL BODY PLUG IN. WILDFIRE ACTS AS THE DISCIPLESHIP BRANCH OF HOPE2FAMILIES.

## **WILDFIRE ONLINE CONTENT**

**3**

### **PRAISE**

**SONGS ARE RELEASED EVERY SUNDAY.**

**SONGS ARE WRITTEN AND COVERED BY THE TEAM, WITH THE POSSIBILITY OF COLLABING WITH OTHER SINGERS.**

**ALL SONGS ARE AVAILBLE ON NEARLY ALL STREAMING PLATFORMS LIKE THE PODCASTS.**

**PRAISE IS DONE IN SEASONS, EACH SEASON IS COMPRISED OF A COLLECTION OF DIFFERENT SONGS.**

WILDFIRE SEEKS TO IGNITE MEN AND WOMEN OF GOD INTO A DEEPER DISCIPLESHIP WITH CHRIST. DISCIPLESHIP MEANING ENCOUNTER WITH JESUS, BAPTISM AND LOCAL BODY PLUG IN. WILDFIRE ACTS AS THE DISCIPLESHIP BRANCH OF HOPE2FAMILIES.

## **WILDFIRE ONLINE CONTENT**

**4**

### **MINI SERIES DEFINED**

**THIS SERIES TAKES BIBLICAL WORDS,  
DOCTRINES AND CONCEPTS,  
EXPLAINING WHAT THEY MEAN.**

### **PURPOSE**

**TO HELP EDUCATE PEOPLE ON WHAT IS  
FOUND IN GODS WORD IN AN ENGAGING  
WAY.**

### **ACCOUNTABILITY**

**LIKE ALL OUR CONTENT, THE VARIOUS  
CIRCLES OF ACCOUNTABILITY WILL BE  
INFORMED AND 1HR PRIOR TO POSTING  
THE VARIOUS ACCOUTABILITY WILL SEE  
WHAT THE POST AND DESCRIPTION  
WILL BE.**

WILDFIRE SEEKS TO IGNITE MEN AND WOMEN OF GOD INTO A DEEPER DISCIPLESHIP WITH CHRIST. DISCIPLESHIP MEANING ENCOUNTER WITH JESUS, BAPTISM AND LOCAL BODY PLUG IN. WILDFIRE ACTS AS THE DISCIPLESHIP BRANCH OF HOPE2FAMILIES.

## **WILDFIRE ONLINE CONTENT**

**5**

### **MINI SERIES CANDID CONVERSATIONS**

**THIS SERIES SEES US HAVE CONVERSATIONS ABOUT UNSPOKEN TOPICS WITH FOLLOWERS OF CHRIST.**

#### **PURPOSE**

**TO NORMALISE CONVERSATIONS PEOPLE FEEL THEY CAN'T HAVE,**

#### **ACCOUNTABILITY**

**LIKE ALL OUR CONTENT, THE VARIOUS CIRCLES OF ACCOUNTABILITY WILL BE INFORMED AND THIR PRIOR TO POSTING THE VARIOUS ACCOUTABILITY WILL SEE WHAT THE POST AND DESCRIPTION WILL BE.**

WILDFIRE SEEKS TO IGNITE MEN AND WOMEN OF GOD INTO A DEEPER DISCIPLESHIP WITH CHRIST. DISCIPLESHIP MEANING ENCOUNTER WITH JESUS, BAPTISM AND LOCAL BODY PLUG IN. WILDFIRE ACTS AS THE DISCIPLESHIP BRANCH OF HOPE2FAMILIES.

## **WILDFIRE ONLINE CONTENT**

**6**

### **MINI SERIES CONTEND**

**THIS SERIES SEES US NOT ONLY DEFEND THE FAITH THROUGH OUR APOLOGETIC, BUT BE ON THE OFFENSIVE WITH THE HOPE WE POSSESS.**

### **PURPOSE**

**TO EQUIP FOLLOWERS OF CHRIST TO ENGAGE IN THE CONTEXT THEY FIND THEMSELVES WITH.**

### **ACCOUNTABILITY**

**LIKE ALL OUR CONTENT, THE VARIOUS CIRCLES OF ACCOUNTABILITY WILL BE INFORMED AND IHR PRIOR TO POSTING THE VARIOUS ACCOUTABILITY WILL SEE WHAT THE POST AND DESCRIPTION WILL BE.**

WILDFIRE SEEKS TO IGNITE MEN AND WOMEN OF GOD INTO A DEEPER DISCIPLESHIP WITH CHRIST. DISCIPLESHIP MEANING ENCOUNTER WITH JESUS, BAPTISM AND LOCAL BODY PLUG IN. WILDFIRE ACTS AS THE DISCIPLESHIP BRANCH OF HOPE2FAMILIES.

## **WILDFIRE ONLINE CONTENT**

**7**

### **MINI SERIES SPEAKING TRUTH**

**THIS SERIES SEES US PRESENT STATEMENTS THAT ARE THERE TO BE THOUGHT-PROVOKING AND BRING PEOPLE TO GOD FOR WISDOM.**

### **PURPOSE**

**PRESENT PEOPLE WITH WISDOM THAT REQUIRES DISCERNMENT.**

### **ACCOUNTABILITY**

**LIKE ALL OUR CONTENT, THE VARIOUS CIRCLES OF ACCOUNTABILITY WILL BE INFORMED AND 1HR PRIOR TO POSTING THE VARIOUS ACCOUTABILITY WILL SEE WHAT THE POST AND DESCRIPTION WILL BE.**



WILDFIRE SEEKS TO IGNITE MEN AND WOMEN OF GOD INTO A DEEPER DISCIPLESHIP WITH CHRIST. DISCIPLESHIP MEANING ENCOUNTER WITH JESUS, BAPTISM AND LOCAL BODY PLUG IN. WILDFIRE ACTS AS THE DISCIPLESHIP BRANCH OF HOPE2FAMILIES.

## **WILDFIRE ONLINE CONTENT**

**8**

### **MINI SERIES VOCATIONAL VACATION**

**THIS SERIES SEES US TAKE SERIOUSLY THE COMMAND TO WORK AND REST BY ORGANISING HOLIDAYS THAT ARE INTENTIONAL IN BEING MISSIONAL.**

#### **PURPOSE**

**HELP PEOPLE SEE AND THEN BE INTENTIONAL IN HOW THEY REST AND DO MISSION ALWAYS, SPECIFICALLY ON HOLIDAYS AND MISSION TRIPS.**

#### **ACCOUNTABILITY**

**LIKE ALL OUR CONTENT, THE VARIOUS CIRCLES OF ACCOUNTABILITY WILL BE INFORMED AND THIR PRIOR TO POSTING THE VARIOUS ACCOUTABILITY WILL SEE WHAT THE POST AND DESCRIPTION WILL BE.**



WILDFIRE SEEKS TO IGNITE MEN AND WOMEN OF GOD INTO A DEEPER DISCIPLESHIP WITH CHRIST. DISCIPLESHIP MEANING ENCOUNTER WITH JESUS, BAPTISM AND LOCAL BODY PLUG IN. WILDFIRE ACTS AS THE DISCIPLESHIP BRANCH OF HOPE2FAMILIES.

## **WILDFIRE ONLINE CONTENT**

**9**

### **MINI SERIES WHAT THE WILDFIRE**

**POSTS, VIDEOS AND Q/AS EXPLAINING  
THE CHARITY.**

#### **PURPOSE**

**PROVIDE CLARITY AND TACKLE THE  
MISPERCEPTIONS THAT MAY EXIST.**

#### **ACCOUNTABILITY**

**LIKE ALL OUR CONTENT, THE VARIOUS  
CIRCLES OF ACCOUNTABILITY WILL BE  
INFORMED AND IHR PRIOR TO POSTING  
THE VARIOUS ACCOUTABILITY WILL SEE  
WHAT THE POST AND DESCRIPTION  
WILL BE.**

**WILDFIRE SEEKS TO IGNITE MEN AND WOMEN OF GOD INTO A DEEPER DISCIPLESHIP WITH CHRIST. DISCIPLESHIP MEANING ENCOUNTER WITH JESUS, BAPTISM AND LOCAL BODY PLUG IN. WILDFIRE ACTS AS THE DISCIPLESHIP BRANCH OF HOPE2FAMILIES.**

## **WILDFIRE ONLINE CONTENT**

**10**

### **MINI SERIES WILDFIRE SKETCHES**

**PROVIDING QUALITY, FUNNY AND  
CHRISTIAN CONTENT.**

#### **PURPOSE**

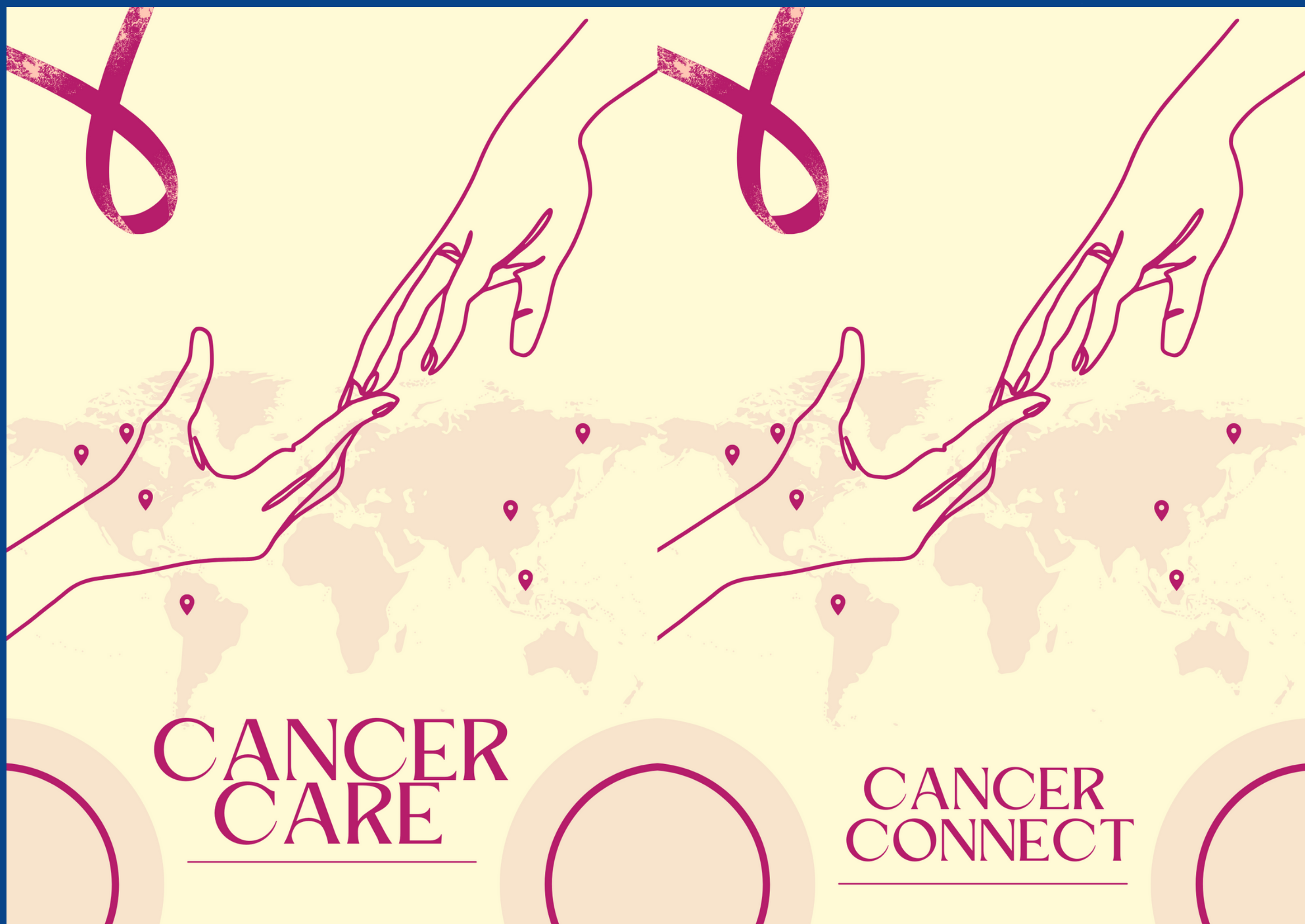
**TO PROVIDE AN ALTERNATIVE SOURCE  
OF ENTERTAINMENT THAT IS GOOD,  
JUST AND PURE.**

#### **ACCOUNTABILITY**

**LIKE ALL OUR CONTENT, THE VARIOUS  
CIRCLES OF ACCOUNTABILITY WILL BE  
INFORMED AND THIR PRIOR TO POSTING  
THE VARIOUS ACCOUTABILITY WILL SEE  
WHAT THE POST AND DESCRIPTION  
WILL BE.**

**FOUNDED IN 2019, HOPE2FAMILIES IS A REGISTERED CHARITY THAT SEEKS TO PROVIDE PRACTICAL SUPPORT FOR THOSE WITH CANCER AND IN WIDER SUFFERING. OUR CHARITY CONTAINS WILDFIRE, WHICH ACTS AS THE YOUTH BRANCH OF THIS CHARITY.**

## **CHARITY PROGRAMS**





FOUNDED IN 2019, HOPE2FAMILIES IS A REGISTERED CHARITY THAT SEEKS TO PROVIDE PRACTICAL SUPPORT FOR THOSE WITH CANCER AND IN WIDER SUFFERING. OUR CHARITY CONTAINS WILDFIRE, WHICH ACTS AS THE YOUTH BRANCH OF THIS CHARITY.

CHARITY PROGRAMS

ELDER CARE

FROM YOU CARING TO THEM CARING

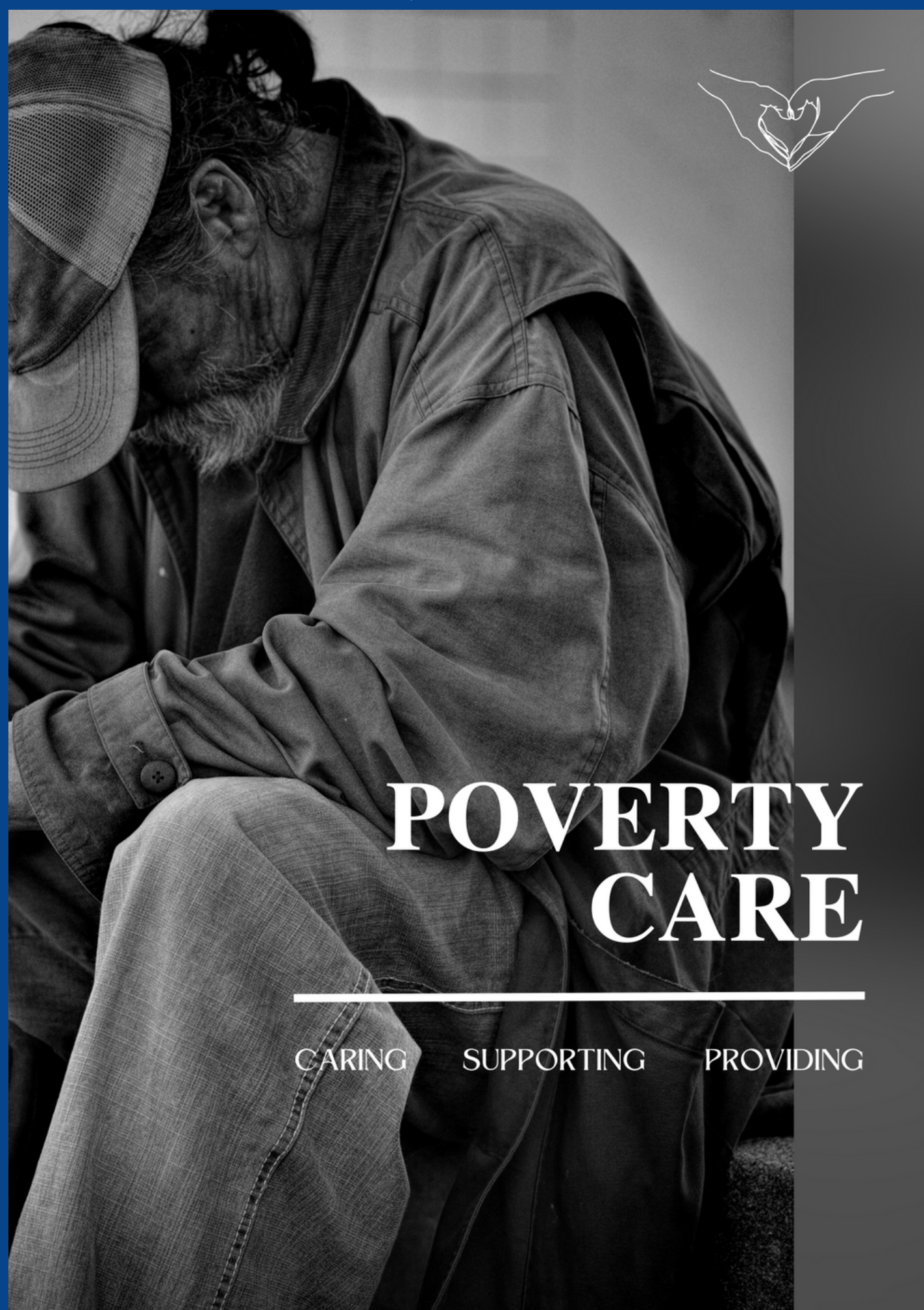
CRAFTS & CHATTER

NEVER TO OLD TO HAVE SOME FUN



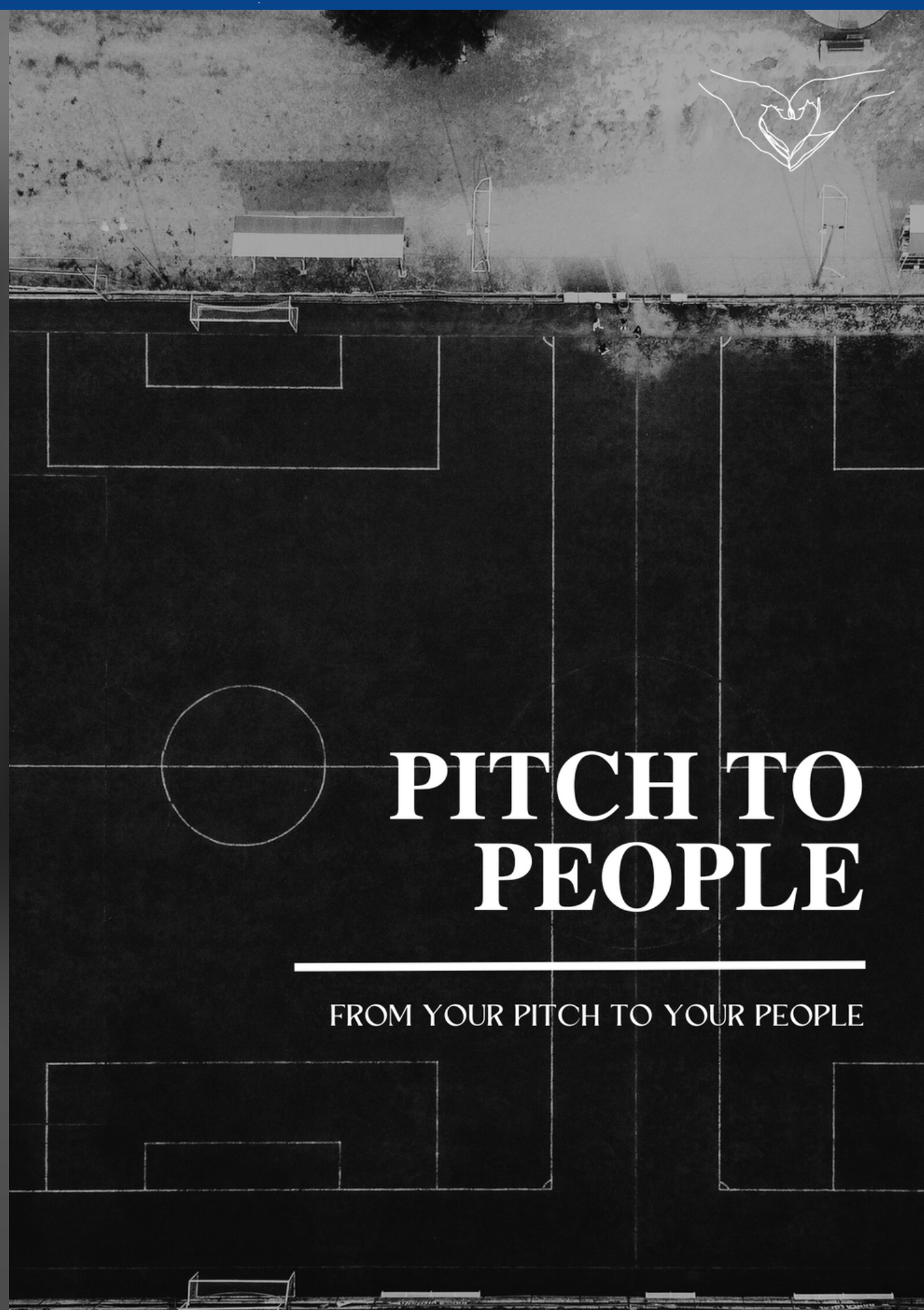
FOUNDED IN 2019, HOPE2FAMILIES IS A REGISTERED CHARITY THAT SEEKS TO PROVIDE PRACTICAL SUPPORT FOR THOSE WITH CANCER AND IN WIDER SUFFERING. OUR CHARITY CONTAINS WILDFIRE, WHICH ACTS AS THE YOUTH BRANCH OF THIS CHARITY.

## CHARITY PROGRAMS



### POVERTY CARE

CARING SUPPORTING PROVIDING



### PITCH TO PEOPLE

FROM YOUR PITCH TO YOUR PEOPLE



WILDFIRE SEEKS TO IGNITE MEN AND WOMEN OF GOD INTO A DEEPER DISCIPLESHIP WITH CHRIST. DISCIPLESHIP MEANING ENCOUNTER WITH JESUS, BAPTISM AND LOCAL BODY PLUG IN. WILDFIRE ACTS AS THE DISCIPLESHIP BRANCH OF HOPE2FAMILIES.

## DISCIPLESHIP PROGRAMS





WILDFIRE SEEKS TO IGNITE MEN AND WOMEN OF GOD INTO A DEEPER DISCIPLESHIP WITH CHRIST. DISCIPLESHIP MEANING ENCOUNTER WITH JESUS, BAPTISM AND LOCAL BODY PLUG IN. WILDFIRE ACTS AS THE DISCIPLESHIP BRANCH OF HOPE2FAMILIES.

## DISCIPLESHIP PROGRAMS



WILDFIRE SEEKS TO IGNITE MEN AND WOMEN OF GOD INTO A DEEPER DISCIPLESHIP WITH CHRIST. DISCIPLESHIP MEANING ENCOUNTER WITH JESUS, BAPTISM AND LOCAL BODY PLUG IN. WILDFIRE ACTS AS THE DISCIPLESHIP BRANCH OF HOPE2FAMILIES.

## DISCIPLESHIP PROGRAMS





**FOUNDED IN 2019, HOPE2FAMILIES IS A REGISTERED CHARITY THAT SEEKS TO PROVIDE PRACTICAL SUPPORT FOR THOSE WITH CANCER AND IN WIDER SUFFERING. OUR CHARITY CONTAINS WILDFIRE, WHICH ACTS AS THE YOUTH BRANCH OF THIS CHARITY.**

## **EVENTS**

### **CHRISTMAS DINNER**





FOUNDED IN 2019, HOPE2FAMILIES IS A REGISTERED CHARITY THAT SEEKS TO PROVIDE PRACTICAL SUPPORT FOR THOSE WITH CANCER AND IN WIDER SUFFERING. OUR CHARITY CONTAINS WILDFIRE, WHICH ACTS AS THE YOUTH BRANCH OF THIS CHARITY.

## EVENTS

### EASTER EVENT





**FOUNDED IN 2019, HOPE2FAMILIES IS A REGISTERED CHARITY THAT SEEKS TO PROVIDE PRACTICAL SUPPORT FOR THOSE WITH CANCER AND IN WIDER SUFFERING. OUR CHARITY CONTAINS WILDFIRE, WHICH ACTS AS THE YOUTH BRANCH OF THIS CHARITY.**

## **EVENTS**

### **SUMMER TENT MISSION**





**FOUNDED IN 2019, HOPE2FAMILIES IS A REGISTERED CHARITY THAT SEEKS TO PROVIDE PRACTICAL SUPPORT FOR THOSE WITH CANCER AND IN WIDER SUFFERING. OUR CHARITY CONTAINS WILDFIRE, WHICH ACTS AS THE YOUTH BRANCH OF THIS CHARITY.**

## **EVENTS**

### **WEDNESDAY NIGHT BIBLE STUDY**





WILDFIRE SEEKS TO IGNITE MEN AND WOMEN OF GOD INTO A DEEPER DISCIPLESHIP WITH CHRIST. DISCIPLESHIP MEANING ENCOUNTER WITH JESUS, BAPTISM AND LOCAL BODY PLUG IN. WILDFIRE ACTS AS THE DISCIPLESHIP BRANCH OF HOPE2FAMILIES.

## EVENTS

WILDFIRE NIGHTS | 17-24 YEAR OLDS | MONTHLY





**WILDFIRE SEEKS TO IGNITE MEN AND WOMEN OF GOD INTO A DEEPER DISCIPLESHIP WITH CHRIST. DISCIPLESHIP MEANING ENCOUNTER WITH JESUS, BAPTISM AND LOCAL BODY PLUG IN. WILDFIRE ACTS AS THE DISCIPLESHIP BRANCH OF HOPE2FAMILIES.**

## **EVENTS**

**HOUSE OF PRAYER | EVERY MONDAY**





WILDFIRE SEEKS TO IGNITE MEN AND WOMEN OF GOD INTO A DEEPER DISCIPLESHIP WITH CHRIST. DISCIPLESHIP MEANING ENCOUNTER WITH JESUS, BAPTISM AND LOCAL BODY PLUG IN. WILDFIRE ACTS AS THE DISCIPLESHIP BRANCH OF HOPE2FAMILIES.

## EVENTS

WILDFIRE CHILL | SUMMER EVENTS





**WILDFIRE SEEKS TO IGNITE MEN AND WOMEN OF GOD INTO A DEEPER DISCIPLESHIP WITH CHRIST. DISCIPLESHIP MEANING ENCOUNTER WITH JESUS, BAPTISM AND LOCAL BODY PLUG IN. WILDFIRE ACTS AS THE DISCIPLESHIP BRANCH OF HOPE2FAMILIES.**

**WILDFIRE HOTSPOTS | EVERY WEDNESDAY**





**FOUNDED IN 2019, HOPE2FAMILIES IS A REGISTERED CHARITY THAT SEEKS TO PROVIDE PRACTICAL SUPPORT FOR THOSE WITH CANCER AND IN WIDER SUFFERING. OUR CHARITY CONTAINS WILDFIRE, WHICH ACTS AS THE YOUTH BRANCH OF THIS CHARITY.**

**TEAMS | HANDS OF HOPE**





**WILDFIRE SEEKS TO IGNITE MEN AND WOMEN OF GOD INTO A DEEPER DISCIPLESHIP WITH CHRIST. DISCIPLESHIP MEANING ENCOUNTER WITH JESUS, BAPTISM AND LOCAL BODY PLUG IN. WILDFIRE ACTS AS THE DISCIPLESHIP BRANCH OF HOPE2FAMILIES.**

**TEAMS | VOCATIONAL VACATION**





**FOUNDED IN 2019, HOPE2FAMILIES IS A REGISTERED CHARITY THAT SEEKS TO PROVIDE PRACTICAL SUPPORT FOR THOSE WITH CANCER AND IN WIDER SUFFERING. OUR CHARITY CONTAINS WILDFIRE, WHICH ACTS AS THE YOUTH BRANCH OF THIS CHARITY.**



## **MEETINGS**

**MONTHLY TEAM MEETINGS | LAST FRIDAY OF EVERY MONTH**

**WEDNESDAY NIGHT MEETINGS | EVERY WEDNESDAY**

**TRUSTEE MEETINGS | QUARTERLY**

**) JANUARY**

**) APRIL**

**) AUGUST**

**WILDFIRE SEEKS TO IGNITE MEN AND WOMEN OF GOD INTO A DEEPER DISCIPLESHIP WITH CHRIST. DISCIPLESHIP MEANING ENCOUNTER WITH JESUS, BAPTISM AND LOCAL BODY PLUG IN. WILDFIRE ACTS AS THE DISCIPLESHIP BRANCH OF HOPE2FAMILIES.**

## **MEETINGS**

**MONTHLY TEAM MEETINGS | EVERY SECOND SATURDAY OF THE MONTH**

**MONTHLY EVENTS | EVERY LAST SATURDAY OF THE MONTH**

**TRUSTEE MEETINGS | QUARTERLY**

**) JANUARY**

**) APRIL**

**) AUGUST**

**FOUNDED IN 2019, HOPE2FAMILIES IS A REGISTERED CHARITY THAT SEEKS TO PROVIDE PRACTICAL SUPPORT FOR THOSE WITH CANCER AND IN WIDER SUFFERING. OUR CHARITY CONTAINS WILDFIRE, WHICH ACTS AS THE YOUTH BRANCH OF THIS CHARITY.**

**DIRECTORS  
HEATHER TAYLOR**





**FOUNDED IN 2019, HOPE2FAMILIES IS A REGISTERED CHARITY THAT SEEKS TO PROVIDE PRACTICAL SUPPORT FOR THOSE WITH CANCER AND IN WIDER SUFFERING. OUR CHARITY CONTAINS WILDFIRE, WHICH ACTS AS THE YOUTH BRANCH OF THIS CHARITY.**

**DIRECTORS  
DILLON TAYLOR**





**FOUNDED IN 2019, HOPE2FAMILIES IS A REGISTERED CHARITY THAT SEEKS TO PROVIDE PRACTICAL SUPPORT FOR THOSE WITH CANCER AND IN WIDER SUFFERING. OUR CHARITY CONTAINS WILDFIRE, WHICH ACTS AS THE YOUTH BRANCH OF THIS CHARITY.**

**DIRECTORS  
LUKE TAYLOR**





**FOUNDED IN 2019, HOPE2FAMILIES IS A REGISTERED CHARITY THAT SEEKS TO PROVIDE PRACTICAL SUPPORT FOR THOSE WITH CANCER AND IN WIDER SUFFERING. OUR CHARITY CONTAINS WILDFIRE, WHICH ACTS AS THE YOUTH BRANCH OF THIS CHARITY.**

**TRUSTEES  
SUSAN MAIRS**





**FOUNDED IN 2019, HOPE2FAMILIES IS A REGISTERED CHARITY THAT SEEKS TO PROVIDE PRACTICAL SUPPORT FOR THOSE WITH CANCER AND IN WIDER SUFFERING. OUR CHARITY CONTAINS WILDFIRE, WHICH ACTS AS THE YOUTH BRANCH OF THIS CHARITY.**

**TRUSTEES  
LIAM BLACK**



**FOUNDED IN 2019, HOPE2FAMILIES IS A REGISTERED CHARITY THAT SEEKS TO PROVIDE PRACTICAL SUPPORT FOR THOSE WITH CANCER AND IN WIDER SUFFERING. OUR CHARITY CONTAINS WILDFIRE, WHICH ACTS AS THE YOUTH BRANCH OF THIS CHARITY.**

**TRUSTEES  
ADELLE BLACK**





**FOUNDED IN 2019, HOPE2FAMILIES IS A REGISTERED CHARITY THAT SEEKS TO PROVIDE PRACTICAL SUPPORT FOR THOSE WITH CANCER AND IN WIDER SUFFERING. OUR CHARITY CONTAINS WILDFIRE, WHICH ACTS AS THE YOUTH BRANCH OF THIS CHARITY.**

**TRUSTEES  
IRIS LONEY**





**FOUNDED IN 2019, HOPE2FAMILIES IS A REGISTERED CHARITY THAT SEEKS TO PROVIDE PRACTICAL SUPPORT FOR THOSE WITH CANCER AND IN WIDER SUFFERING. OUR CHARITY CONTAINS WILDFIRE, WHICH ACTS AS THE YOUTH BRANCH OF THIS CHARITY.**

**TRUSTEES  
THELMA SPEIRS**





**FOUNDED IN 2019, HOPE2FAMILIES IS A REGISTERED CHARITY THAT SEEKS TO PROVIDE PRACTICAL SUPPORT FOR THOSE WITH CANCER AND IN WIDER SUFFERING. OUR CHARITY CONTAINS WILDFIRE, WHICH ACTS AS THE YOUTH BRANCH OF THIS CHARITY.**

**TRUSTEES  
NIAMH WRIGHT**





**FOUNDED IN 2019, HOPE2FAMILIES IS A REGISTERED CHARITY THAT SEEKS TO PROVIDE PRACTICAL SUPPORT FOR THOSE WITH CANCER AND IN WIDER SUFFERING. OUR CHARITY CONTAINS WILDFIRE, WHICH ACTS AS THE YOUTH BRANCH OF THIS CHARITY.**

**TRUSTEES  
PETER WRIGHT**





**FOUNDED IN 2019, HOPE2FAMILIES IS A REGISTERED CHARITY THAT SEEKS TO PROVIDE PRACTICAL SUPPORT FOR THOSE WITH CANCER AND IN WIDER SUFFERING. OUR CHARITY CONTAINS WILDFIRE, WHICH ACTS AS THE YOUTH BRANCH OF THIS CHARITY.**

**TRUSTEES  
HEATHER TAYLOR**





**FOUNDED IN 2019, HOPE2FAMILIES IS A REGISTERED CHARITY THAT SEEKS TO PROVIDE PRACTICAL SUPPORT FOR THOSE WITH CANCER AND IN WIDER SUFFERING. OUR CHARITY CONTAINS WILDFIRE, WHICH ACTS AS THE YOUTH BRANCH OF THIS CHARITY.**

**TRUSTEES  
DILLON TAYLOR**





FOUNDED IN 2019, HOPE2FAMILIES IS A REGISTERED CHARITY THAT SEEKS TO PROVIDE PRACTICAL SUPPORT FOR THOSE WITH CANCER AND IN WIDER SUFFERING. OUR CHARITY CONTAINS WILDFIRE, WHICH ACTS AS THE YOUTH BRANCH OF THIS CHARITY.

TRUSTEES  
LUKE TAYLOR





**FOUNDED IN 2019, HOPE2FAMILIES IS A REGISTERED CHARITY THAT SEEKS TO PROVIDE PRACTICAL SUPPORT FOR THOSE WITH CANCER AND IN WIDER SUFFERING. OUR CHARITY CONTAINS WILDFIRE, WHICH ACTS AS THE YOUTH BRANCH OF THIS CHARITY.**

**VOLUNTEERS**

**THELMA SPEIRS**





**FOUNDED IN 2019, HOPE2FAMILIES IS A REGISTERED CHARITY THAT SEEKS TO PROVIDE PRACTICAL SUPPORT FOR THOSE WITH CANCER AND IN WIDER SUFFERING. OUR CHARITY CONTAINS WILDFIRE, WHICH ACTS AS THE YOUTH BRANCH OF THIS CHARITY.**

**VOLUNTEERS**

**ALANA SPEIRS**





**FOUNDED IN 2019, HOPE2FAMILIES IS A REGISTERED CHARITY THAT SEEKS TO PROVIDE PRACTICAL SUPPORT FOR THOSE WITH CANCER AND IN WIDER SUFFERING. OUR CHARITY CONTAINS WILDFIRE, WHICH ACTS AS THE YOUTH BRANCH OF THIS CHARITY.**

**VOLUNTEERS**

**STEPHANIE LOUISE**





**FOUNDED IN 2019, HOPE2FAMILIES IS A REGISTERED CHARITY THAT SEEKS TO PROVIDE PRACTICAL SUPPORT FOR THOSE WITH CANCER AND IN WIDER SUFFERING. OUR CHARITY CONTAINS WILDFIRE, WHICH ACTS AS THE YOUTH BRANCH OF THIS CHARITY.**

**VOLUNTEERS**

**PHYLLIS COCHRANE**





**FOUNDED IN 2019, HOPE2FAMILIES IS A REGISTERED CHARITY THAT SEEKS TO PROVIDE PRACTICAL SUPPORT FOR THOSE WITH CANCER AND IN WIDER SUFFERING. OUR CHARITY CONTAINS WILDFIRE, WHICH ACTS AS THE YOUTH BRANCH OF THIS CHARITY.**

**VOLUNTEERS  
JANETTE SOMMERS**





**FOUNDED IN 2019, HOPE2FAMILIES IS A REGISTERED CHARITY THAT SEEKS TO PROVIDE PRACTICAL SUPPORT FOR THOSE WITH CANCER AND IN WIDER SUFFERING. OUR CHARITY CONTAINS WILDFIRE, WHICH ACTS AS THE YOUTH BRANCH OF THIS CHARITY.**

**VOLUNTEERS  
MARC TAYLOR**





**FOUNDED IN 2019, HOPE2FAMILIES IS A REGISTERED CHARITY THAT SEEKS TO PROVIDE PRACTICAL SUPPORT FOR THOSE WITH CANCER AND IN WIDER SUFFERING. OUR CHARITY CONTAINS WILDFIRE, WHICH ACTS AS THE YOUTH BRANCH OF THIS CHARITY.**

**VOLUNTEERS  
HEATHER TAYLOR**





**FOUNDED IN 2019, HOPE2FAMILIES IS A REGISTERED CHARITY THAT SEEKS TO PROVIDE PRACTICAL SUPPORT FOR THOSE WITH CANCER AND IN WIDER SUFFERING. OUR CHARITY CONTAINS WILDFIRE, WHICH ACTS AS THE YOUTH BRANCH OF THIS CHARITY.**

**VOLUNTEERS  
LAURA GORDON**





**FOUNDED IN 2019, HOPE2FAMILIES IS A REGISTERED CHARITY THAT SEEKS TO PROVIDE PRACTICAL SUPPORT FOR THOSE WITH CANCER AND IN WIDER SUFFERING. OUR CHARITY CONTAINS WILDFIRE, WHICH ACTS AS THE YOUTH BRANCH OF THIS CHARITY.**

**VOLUNTEERS**

**IRIS LONEY**





**FOUNDED IN 2019, HOPE2FAMILIES IS A REGISTERED CHARITY THAT SEEKS TO PROVIDE PRACTICAL SUPPORT FOR THOSE WITH CANCER AND IN WIDER SUFFERING. OUR CHARITY CONTAINS WILDFIRE, WHICH ACTS AS THE YOUTH BRANCH OF THIS CHARITY.**

**VOLUNTEERS**

**TABITHA TANASCHE**





**FOUNDED IN 2019, HOPE2FAMILIES IS A REGISTERED CHARITY THAT SEEKS TO PROVIDE PRACTICAL SUPPORT FOR THOSE WITH CANCER AND IN WIDER SUFFERING. OUR CHARITY CONTAINS WILDFIRE, WHICH ACTS AS THE YOUTH BRANCH OF THIS CHARITY.**

**VOLUNTEERS**

**YEONIL TANASCHE**





**FOUNDED IN 2019, HOPE2FAMILIES IS A REGISTERED CHARITY THAT SEEKS TO PROVIDE PRACTICAL SUPPORT FOR THOSE WITH CANCER AND IN WIDER SUFFERING. OUR CHARITY CONTAINS WILDFIRE, WHICH ACTS AS THE YOUTH BRANCH OF THIS CHARITY.**

## **VOLUNTEERS**

**AMY LOUISE**





**WILDFIRE SEEKS TO IGNITE MEN AND WOMEN OF GOD INTO A DEEPER DISCIPLESHIP WITH CHRIST. DISCIPLESHIP MEANING ENCOUNTER WITH JESUS, BAPTISM AND LOCAL BODY PLUG IN. WILDFIRE ACTS AS THE DISCIPLESHIP BRANCH OF HOPE2FAMILIES.**

**VOLUNTEERS  
CARYS BLACK**





**WILDFIRE SEEKS TO IGNITE MEN AND WOMEN OF GOD INTO A DEEPER DISCIPLESHIP WITH CHRIST. DISCIPLESHIP MEANING ENCOUNTER WITH JESUS, BAPTISM AND LOCAL BODY PLUG IN. WILDFIRE ACTS AS THE DISCIPLESHIP BRANCH OF HOPE2FAMILIES.**

**VOLUNTEERS**

**HANNAH STEVENS**





**WILDFIRE SEEKS TO IGNITE MEN AND WOMEN OF GOD INTO A DEEPER DISCIPLESHIP WITH CHRIST. DISCIPLESHIP MEANING ENCOUNTER WITH JESUS, BAPTISM AND LOCAL BODY PLUG IN. WILDFIRE ACTS AS THE DISCIPLESHIP BRANCH OF HOPE2FAMILIES.**

**VOLUNTEERS  
JOHNNY EADIE**





**WILDFIRE SEEKS TO IGNITE MEN AND WOMEN OF GOD INTO A DEEPER DISCIPLESHIP WITH CHRIST. DISCIPLESHIP MEANING ENCOUNTER WITH JESUS, BAPTISM AND LOCAL BODY PLUG IN. WILDFIRE ACTS AS THE DISCIPLESHIP BRANCH OF HOPE2FAMILIES.**

**VOLUNTEERS  
CALEB MOORE**





**WILDFIRE SEEKS TO IGNITE MEN AND WOMEN OF GOD INTO A DEEPER DISCIPLESHIP WITH CHRIST. DISCIPLESHIP MEANING ENCOUNTER WITH JESUS, BAPTISM AND LOCAL BODY PLUG IN. WILDFIRE ACTS AS THE DISCIPLESHIP BRANCH OF HOPE2FAMILIES.**

**VOLUNTEERS**

**SAMUEL MCILMOYLE**





**WILDFIRE SEEKS TO IGNITE MEN AND WOMEN OF GOD INTO A DEEPER DISCIPLESHIP WITH CHRIST. DISCIPLESHIP MEANING ENCOUNTER WITH JESUS, BAPTISM AND LOCAL BODY PLUG IN. WILDFIRE ACTS AS THE DISCIPLESHIP BRANCH OF HOPE2FAMILIES.**

**VOLUNTEERS**

**IONA MAIRS**





**WILDFIRE SEEKS TO IGNITE MEN AND WOMEN OF GOD INTO A DEEPER DISCIPLESHIP WITH CHRIST. DISCIPLESHIP MEANING ENCOUNTER WITH JESUS, BAPTISM AND LOCAL BODY PLUG IN. WILDFIRE ACTS AS THE DISCIPLESHIP BRANCH OF HOPE2FAMILIES.**

**VOLUNTEERS  
DAN BARFOOT**





**WILDFIRE SEEKS TO IGNITE MEN AND WOMEN OF GOD INTO A DEEPER DISCIPLESHIP WITH CHRIST. DISCIPLESHIP MEANING ENCOUNTER WITH JESUS, BAPTISM AND LOCAL BODY PLUG IN. WILDFIRE ACTS AS THE DISCIPLESHIP BRANCH OF HOPE2FAMILIES.**

**VOLUNTEERS**

**DANIEL PRICE**





**WILDFIRE SEEKS TO IGNITE MEN AND WOMEN OF GOD INTO A DEEPER DISCIPLESHIP WITH CHRIST. DISCIPLESHIP MEANING ENCOUNTER WITH JESUS, BAPTISM AND LOCAL BODY PLUG IN. WILDFIRE ACTS AS THE DISCIPLESHIP BRANCH OF HOPE2FAMILIES.**

**VOLUNTEERS**

**SOPHIE MCALLISTER**





**WILDFIRE SEEKS TO IGNITE MEN AND WOMEN OF GOD INTO A DEEPER DISCIPLESHIP WITH CHRIST. DISCIPLESHIP MEANING ENCOUNTER WITH JESUS, BAPTISM AND LOCAL BODY PLUG IN. WILDFIRE ACTS AS THE DISCIPLESHIP BRANCH OF HOPE2FAMILIES.**

**VOLUNTEERS**

**CONOR O'HAGAN**





**WILDFIRE SEEKS TO IGNITE MEN AND WOMEN OF GOD INTO A DEEPER DISCIPLESHIP WITH CHRIST. DISCIPLESHIP MEANING ENCOUNTER WITH JESUS, BAPTISM AND LOCAL BODY PLUG IN. WILDFIRE ACTS AS THE DISCIPLESHIP BRANCH OF HOPE2FAMILIES.**

**VOLUNTEERS**

**NOAH BLACK**





**WILDFIRE SEEKS TO IGNITE MEN AND WOMEN OF GOD INTO A DEEPER DISCIPLESHIP WITH CHRIST. DISCIPLESHIP MEANING ENCOUNTER WITH JESUS, BAPTISM AND LOCAL BODY PLUG IN. WILDFIRE ACTS AS THE DISCIPLESHIP BRANCH OF HOPE2FAMILIES.**

**VOLUNTEERS**

**LOIS GLENDINNING**





**WILDFIRE SEEKS TO IGNITE MEN AND WOMEN OF GOD INTO A DEEPER DISCIPLESHIP WITH CHRIST. DISCIPLESHIP MEANING ENCOUNTER WITH JESUS, BAPTISM AND LOCAL BODY PLUG IN. WILDFIRE ACTS AS THE DISCIPLESHIP BRANCH OF HOPE2FAMILIES.**

**VOLUNTEERS**

**MICHAEL BURNSIDE**





**WILDFIRE SEEKS TO IGNITE MEN AND WOMEN OF GOD INTO A DEEPER DISCIPLESHIP WITH CHRIST. DISCIPLESHIP MEANING ENCOUNTER WITH JESUS, BAPTISM AND LOCAL BODY PLUG IN. WILDFIRE ACTS AS THE DISCIPLESHIP BRANCH OF HOPE2FAMILIES.**

**VOLUNTEERS  
MORIAH SINCLAIR**





**WILDFIRE SEEKS TO IGNITE MEN AND WOMEN OF GOD INTO A DEEPER DISCIPLESHIP WITH CHRIST. DISCIPLESHIP MEANING ENCOUNTER WITH JESUS, BAPTISM AND LOCAL BODY PLUG IN. WILDFIRE ACTS AS THE DISCIPLESHIP BRANCH OF HOPE2FAMILIES.**

**VOLUNTEERS  
ADAM DONNELL**



**WILDFIRE SEEKS TO IGNITE MEN AND WOMEN OF GOD INTO A DEEPER DISCIPLESHIP WITH CHRIST. DISCIPLESHIP MEANING ENCOUNTER WITH JESUS, BAPTISM AND LOCAL BODY PLUG IN. WILDFIRE ACTS AS THE DISCIPLESHIP BRANCH OF HOPE2FAMILIES.**

**VOLUNTEERS**

**JOSHUA STEWART**





**WILDFIRE SEEKS TO IGNITE MEN AND WOMEN OF GOD INTO A DEEPER DISCIPLESHIP WITH CHRIST. DISCIPLESHIP MEANING ENCOUNTER WITH JESUS, BAPTISM AND LOCAL BODY PLUG IN. WILDFIRE ACTS AS THE DISCIPLESHIP BRANCH OF HOPE2FAMILIES.**

**VOLUNTEERS**

**SOPHIE WIGHTMAN**





**WILDFIRE SEEKS TO IGNITE MEN AND WOMEN OF GOD INTO A DEEPER DISCIPLESHIP WITH CHRIST. DISCIPLESHIP MEANING ENCOUNTER WITH JESUS, BAPTISM AND LOCAL BODY PLUG IN. WILDFIRE ACTS AS THE DISCIPLESHIP BRANCH OF HOPE2FAMILIES.**

**VOLUNTEERS  
MARC TAYLOR**





**WILDFIRE SEEKS TO IGNITE MEN AND WOMEN OF GOD INTO A DEEPER DISCIPLESHIP WITH CHRIST. DISCIPLESHIP MEANING ENCOUNTER WITH JESUS, BAPTISM AND LOCAL BODY PLUG IN. WILDFIRE ACTS AS THE DISCIPLESHIP BRANCH OF HOPE2FAMILIES.**

**VOLUNTEERS  
HEATHER TAYLOR**





**WILDFIRE SEEKS TO IGNITE MEN AND WOMEN OF GOD INTO A DEEPER DISCIPLESHIP WITH CHRIST. DISCIPLESHIP MEANING ENCOUNTER WITH JESUS, BAPTISM AND LOCAL BODY PLUG IN. WILDFIRE ACTS AS THE DISCIPLESHIP BRANCH OF HOPE2FAMILIES.**

**VOLUNTEERS  
JOHNNY MAIRS**





**WILDFIRE SEEKS TO IGNITE MEN AND WOMEN OF GOD INTO A DEEPER DISCIPLESHIP WITH CHRIST. DISCIPLESHIP MEANING ENCOUNTER WITH JESUS, BAPTISM AND LOCAL BODY PLUG IN. WILDFIRE ACTS AS THE DISCIPLESHIP BRANCH OF HOPE2FAMILIES.**

**VOLUNTEERS  
JACOB M-CRAIG**





**WILDFIRE SEEKS TO IGNITE MEN AND WOMEN OF GOD INTO A DEEPER DISCIPLESHIP WITH CHRIST. DISCIPLESHIP MEANING ENCOUNTER WITH JESUS, BAPTISM AND LOCAL BODY PLUG IN. WILDFIRE ACTS AS THE DISCIPLESHIP BRANCH OF HOPE2FAMILIES.**

**VOLUNTEERS  
CALEB NGYUTIN**





**WILDFIRE SEEKS TO IGNITE MEN AND WOMEN OF GOD INTO A DEEPER DISCIPLESHIP WITH CHRIST. DISCIPLESHIP MEANING ENCOUNTER WITH JESUS, BAPTISM AND LOCAL BODY PLUG IN. WILDFIRE ACTS AS THE DISCIPLESHIP BRANCH OF HOPE2FAMILIES.**

**VOLUNTEERS  
DAN MAIRS**





**WILDFIRE SEEKS TO IGNITE MEN AND WOMEN OF GOD INTO A DEEPER DISCIPLESHIP WITH CHRIST. DISCIPLESHIP MEANING ENCOUNTER WITH JESUS, BAPTISM AND LOCAL BODY PLUG IN. WILDFIRE ACTS AS THE DISCIPLESHIP BRANCH OF HOPE2FAMILIES.**

**VOLUNTEERS  
JAKE SPEERS**





**WILDFIRE SEEKS TO IGNITE MEN AND WOMEN OF GOD INTO A DEEPER DISCIPLESHIP WITH CHRIST. DISCIPLESHIP MEANING ENCOUNTER WITH JESUS, BAPTISM AND LOCAL BODY PLUG IN. WILDFIRE ACTS AS THE DISCIPLESHIP BRANCH OF HOPE2FAMILIES.**

**VOLUNTEERS  
SARAH REID**





WILDFIRE SEEKS TO IGNITE MEN AND WOMEN OF GOD INTO A DEEPER DISCIPLESHIP WITH CHRIST. DISCIPLESHIP MEANING ENCOUNTER WITH JESUS, BAPTISM AND LOCAL BODY PLUG IN. WILDFIRE ACTS AS THE DISCIPLESHIP BRANCH OF HOPE2FAMILIES.

VOLUNTEERS

DILLON TAYLOR





**WILDFIRE SEEKS TO IGNITE MEN AND WOMEN OF GOD INTO A DEEPER DISCIPLESHIP WITH CHRIST. DISCIPLESHIP MEANING ENCOUNTER WITH JESUS, BAPTISM AND LOCAL BODY PLUG IN. WILDFIRE ACTS AS THE DISCIPLESHIP BRANCH OF HOPE2FAMILIES.**

**VOLUNTEERS**

**LUKE TAYLOR**





**WILDFIRE SEEKS TO IGNITE MEN AND WOMEN OF GOD INTO A DEEPER DISCIPLESHIP WITH CHRIST. DISCIPLESHIP MEANING ENCOUNTER WITH JESUS, BAPTISM AND LOCAL BODY PLUG IN. WILDFIRE ACTS AS THE DISCIPLESHIP BRANCH OF HOPE2FAMILIES.**

**VOLUNTEERS  
PETER WRIGHT**





**WILDFIRE SEEKS TO IGNITE MEN AND WOMEN OF GOD INTO A DEEPER DISCIPLESHIP WITH CHRIST. DISCIPLESHIP MEANING ENCOUNTER WITH JESUS, BAPTISM AND LOCAL BODY PLUG IN. WILDFIRE ACTS AS THE DISCIPLESHIP BRANCH OF HOPE2FAMILIES.**

**VOLUNTEERS  
TIERNA GILL**





**WILDFIRE SEEKS TO IGNITE MEN AND WOMEN OF GOD INTO A DEEPER DISCIPLESHIP WITH CHRIST. DISCIPLESHIP MEANING ENCOUNTER WITH JESUS, BAPTISM AND LOCAL BODY PLUG IN. WILDFIRE ACTS AS THE DISCIPLESHIP BRANCH OF HOPE2FAMILIES.**

**VOLUNTEERS  
EWAN WILLIAMS**





**WILDFIRE SEEKS TO IGNITE MEN AND WOMEN OF GOD INTO A DEEPER DISCIPLESHIP WITH CHRIST. DISCIPLESHIP MEANING ENCOUNTER WITH JESUS, BAPTISM AND LOCAL BODY PLUG IN. WILDFIRE ACTS AS THE DISCIPLESHIP BRANCH OF HOPE2FAMILIES.**

**VOLUNTEERS  
MARK CROOKS**





**WILDFIRE SEEKS TO IGNITE MEN AND WOMEN OF GOD INTO A DEEPER DISCIPLESHIP WITH CHRIST. DISCIPLESHIP MEANING ENCOUNTER WITH JESUS, BAPTISM AND LOCAL BODY PLUG IN. WILDFIRE ACTS AS THE DISCIPLESHIP BRANCH OF HOPE2FAMILIES.**

**VOLUNTEERS**

**AMY LOUISE**





FOUNDED IN 2019, HOPE2FAMILIES IS A REGISTERED CHARITY THAT SEEKS TO PROVIDE PRACTICAL SUPPORT FOR THOSE WITH CANCER AND IN WIDER SUFFERING. OUR CHARITY CONTAINS WILDFIRE, WHICH ACTS AS THE YOUTH BRANCH OF THIS CHARITY.

## LEGALITY



Child protection lead  
Safety | Fire | Hygiene Officer

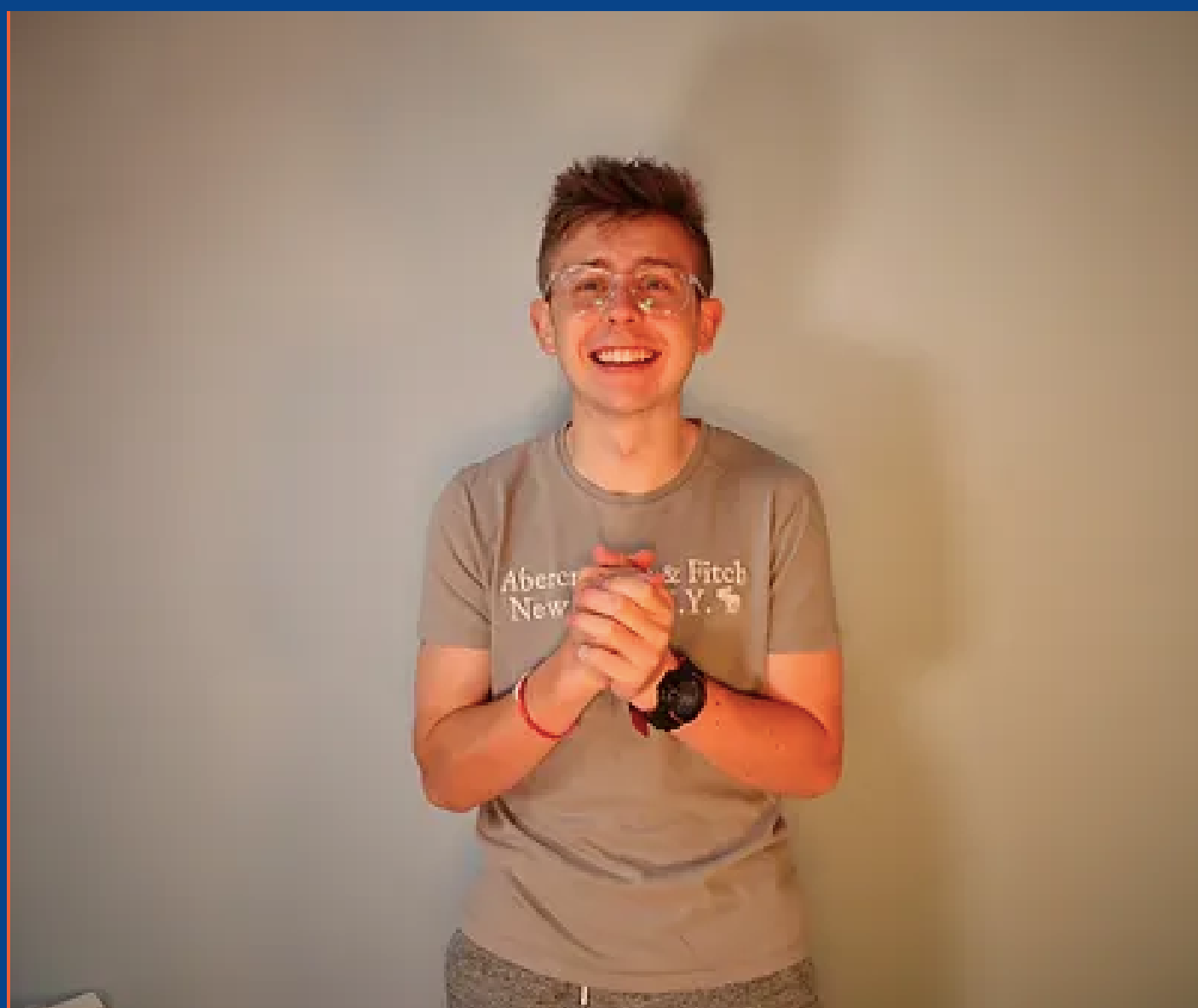
**Mare Taylor**

Ensuring safety in our charity is our priority.



FOUNDED IN 2019, HOPE2FAMILIES IS A REGISTERED CHARITY THAT SEEKS TO PROVIDE PRACTICAL SUPPORT FOR THOSE WITH CANCER AND IN WIDER SUFFERING. OUR CHARITY CONTAINS WILDFIRE, WHICH ACTS AS THE YOUTH BRANCH OF THIS CHARITY.

## LEGALITY



Deputy child protection lead

**Luke Taylor**

Ensuring safety in our charity is our priority.





FOUNDED IN 2019, HOPE2FAMILIES IS A REGISTERED CHARITY THAT SEEKS TO PROVIDE PRACTICAL SUPPORT FOR THOSE WITH CANCER AND IN WIDER SUFFERING. OUR CHARITY CONTAINS WILDFIRE, WHICH ACTS AS THE YOUTH BRANCH OF THIS CHARITY.

## LEGALITY



Deputy Child Protection lead

**Heather Taylor**

Ensuring safety in our charity is our priority.



**FOUNDED IN 2019, HOPE2FAMILIES IS A REGISTERED CHARITY THAT SEEKS TO PROVIDE PRACTICAL SUPPORT FOR THOSE WITH CANCER AND IN WIDER SUFFERING. OUR CHARITY CONTAINS WILDFIRE, WHICH ACTS AS THE YOUTH BRANCH OF THIS CHARITY.**

## **LEGALITY**



**FIRST AID TRAINED**



**FIRST AID TRAINED**





FOUNDED IN 2019, HOPE2FAMILIES IS A REGISTERED CHARITY THAT SEEKS TO PROVIDE PRACTICAL SUPPORT FOR THOSE WITH CANCER AND IN WIDER SUFFERING. OUR CHARITY CONTAINS WILDFIRE, WHICH ACTS AS THE YOUTH BRANCH OF THIS CHARITY.

LEGALITY

ACCOUNTANT | STEVE POTTER

**Potter Finnegan** Ltd   
Chartered Accountants

**Potter Finnegan** Ltd   
Chartered Accountants

**Potter Finnegan** Ltd   
Chartered Accountants

FOUNDED IN 2019, HOPE2FAMILIES IS A REGISTERED CHARITY THAT SEEKS TO PROVIDE PRACTICAL SUPPORT FOR THOSE WITH CANCER AND IN WIDER SUFFERING. OUR CHARITY CONTAINS WILDFIRE, WHICH ACTS AS THE YOUTH BRANCH OF THIS CHARITY.

LEGALITY

EXTERNAL TREASURER STILL TO BE INSTALLED



coming  
soon



FOUNDED IN 2019, HOPE2FAMILIES IS A REGISTERED CHARITY THAT SEEKS TO PROVIDE PRACTICAL SUPPORT FOR THOSE WITH CANCER AND IN WIDER SUFFERING. OUR CHARITY CONTAINS WILDFIRE, WHICH ACTS AS THE YOUTH BRANCH OF THIS CHARITY.

## LEGALITY

### SAFEGUARDING POLICIES

[ALL POLICIES CAN BE FOUND BY CLICKING THIS](#)

1

---

# HOPE2FAMILIES SAFEGUARDING POLICY

---

Safeguarding policy

2

70 Long Commons Coleraine  
Coleraine, BT52 1LH  
07856201383  
wildfireministrys@gmail.com

#### Table of Contents:

The purpose and scope of this policy statement:	4
Policy Basis:	5
Major focuses of our safeguarding policy statement:	10
Recruiting and selecting staff and volunteers:	11
Training, Management & Oversight:	12
Photographing and filming policy statement:	14
Online Safety:	19
Having a conversation:	23
Disciplinary action:	25
Auditing our safeguarding policy consistently:	28
Behaviour Code:	29
Reporting concerns:	32
Responding to an emergency phone call:	36

FOUNDED IN 2019, HOPE2FAMILIES IS A REGISTERED CHARITY THAT SEEKS TO PROVIDE PRACTICAL SUPPORT FOR THOSE WITH CANCER AND IN WIDER SUFFERING. OUR CHARITY CONTAINS WILDFIRE, WHICH ACTS AS THE YOUTH BRANCH OF THIS CHARITY.

LEGALITY

COMPANIES HOUSE

[COMPANIES SHOUSE WEBSITE CAN BE FOUND CLICKING THIS](#)

Overview [Filing history](#) [People](#) [More](#)

Registered office address  
**15 Ballyveely Road, Ballymoney, County Antrim, United Kingdom, BT53 8UX**

Company status  
**Active**

Company type  
**Private Limited Company by guarantee without share capital use of 'Limited' exemption**

Incorporated on  
**18 June 2021**

**Accounts**

Next accounts made up to **30 June 2023** due by **31 March 2024**

Last accounts made up to **30 June 2022**


**Confirmation statement**

Next statement date **17 June 2024** due by **1 July 2024**

Last statement dated **17 June 2023**

**Nature of business (SIC)**

94910 - Activities of religious organisations

 Find and u

Companies House does not verify the accuracy of the information

Search for a company or officer

[Advanced company search](#)

**HOPE2FAMILIES**

Company number **NI680144**

[Follow this company](#) [File for this company](#)

Search for a company or officer

[Advanced company search](#)

**HOPE2FAMILIES**

Company number **NI680144**





HOPE2FAMILIES



# INFORMATION HOPE2FAMILIES & WILDFIRE PACK